

APPENDIX B – REACH PHOTOGRAPHS

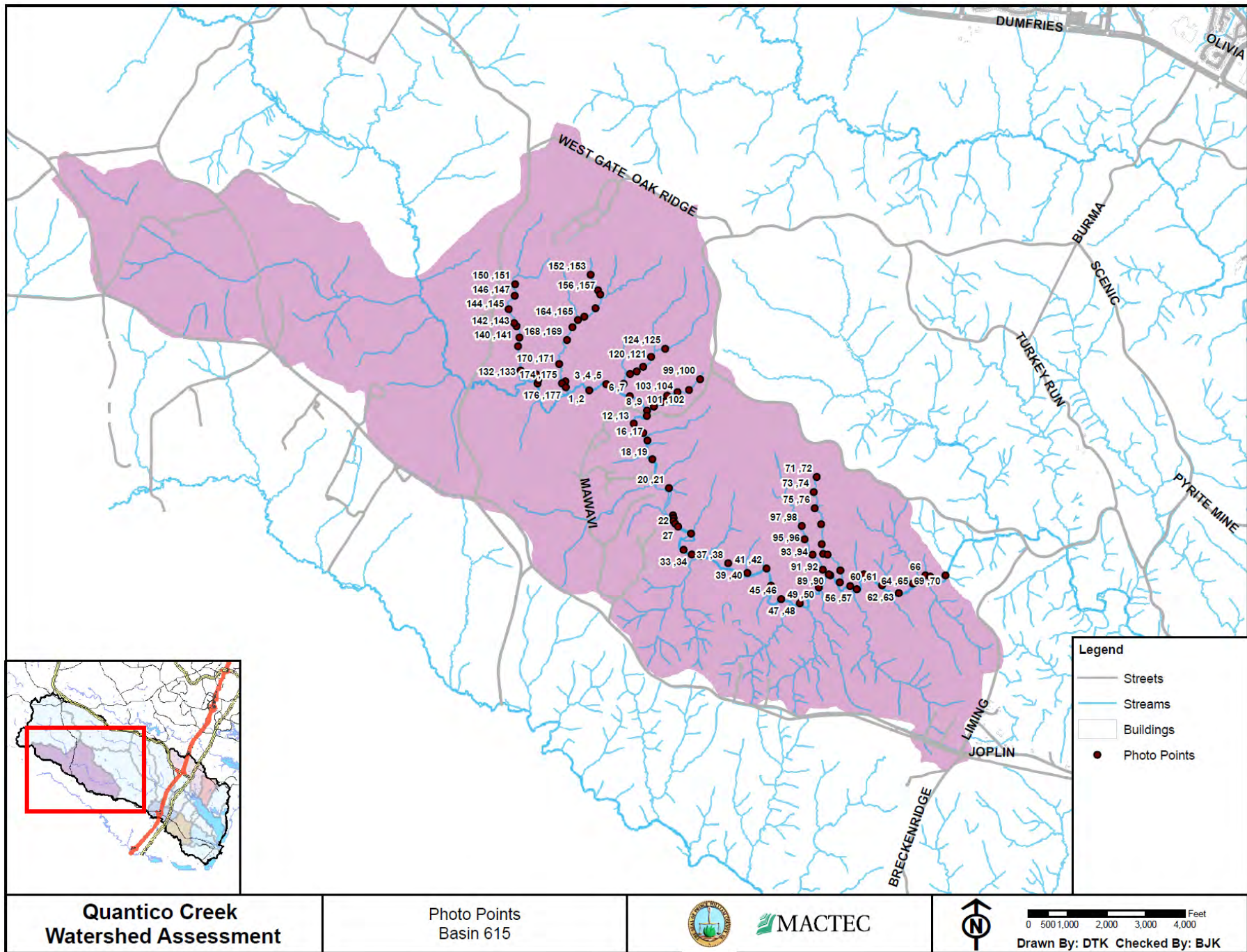




Photo 2: Uppermost portion of Reach 615-C, South Branch of Quantico Creek.



Photo 3: Reach 615-C.



Photo 7: Reach 615-C.



Photo 9: Access road bridge in Prince William Forest Park, Reach 615-C.



Photo 13: Reach 615-C.



Photo 15: Reach 615-C.



Photo 19: The lake at Prince William Forest Park, lowermost portion of Reach 615-C.



Photo 20: The lake at Prince William Forest Park, lowermost portion of Reach 615-C.



Photo 23: The dam at the lower end of the lake in Prince William Forest Park, Reach 615-B.

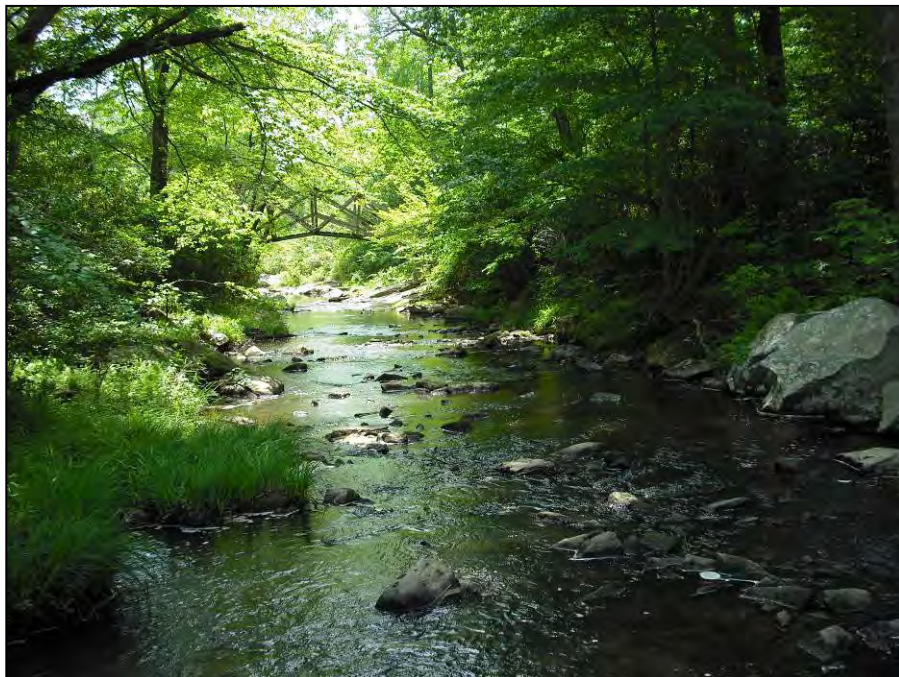


Photo 24: Reach 615-B.



Photo 30: Reach 615-B.



Photo 34: Reach 615-B.



Photo 37: Reach 615-B.



Photo 40: Reach 615-B.



Photo 43: Reach 615-A.



Photo 46: Reach 615-A.



Photo 58: Reach 615-A.



Photo 60: Reach 615-A.



Photo 63: Reach 615-A.



Photo 70: Reach 615-A.



Photo 4: Uppermost portion of Reach 630-E.



Photo 5: Reach 630-E.



Photo 14: Tire and rubble dumping along gravel road, near upstream end of Reach 630-D.



Photo 15: Gravel road channel crossing, near upstream end of Reach 630-D.



Photo 27: Channel erosion and exposed sanitary sewer along Reach 630-D.



Photo 30: Channel widening along Reach 630-D.



Photo 112: Localized streambank erosion on the outside of a meander on Reach 630-C.



Photo 115: Deposition and channel widening along Reach 630-C.



Photo 162: Reach 630-B.



Photo 170: 630-B.



Photo 182: Reach 630-A.



Photo 187: Reach 630-A.

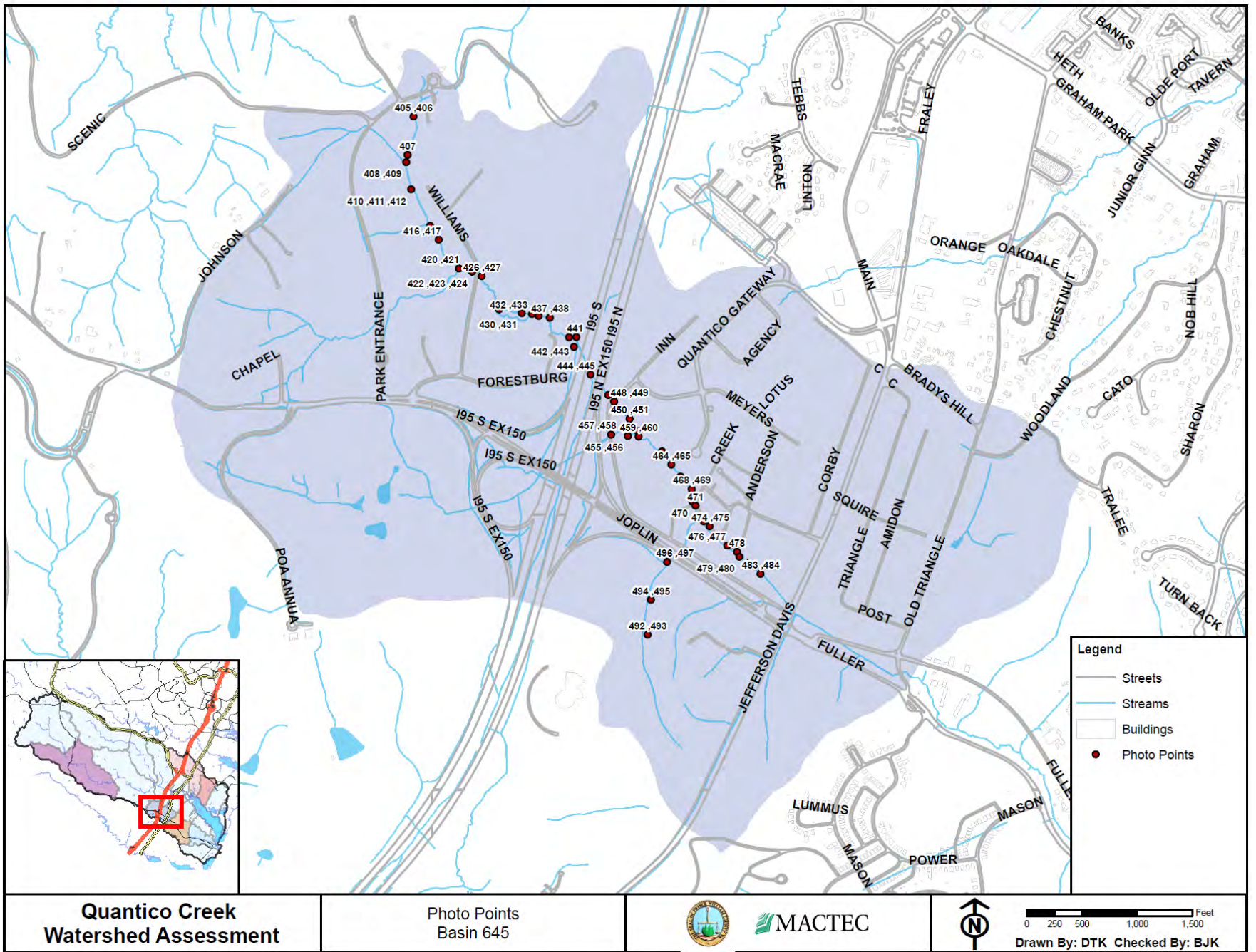




Photo 408: Pipe outfall, downstream of Park Entrance Road, on Reach 645-D.



Photo 411: Reach 645-D.



Photo 418: Reach 645-D.



Photo 422: Reach 645-D.



Photo 431: Reach 645-C.



Photo 442: Reach 645-C.



Photo 454: Reach 645-B.



Photo 460: Reach 645-B.



Photo 471: Paved low water crossing in poor condition, along Reach 645-A.

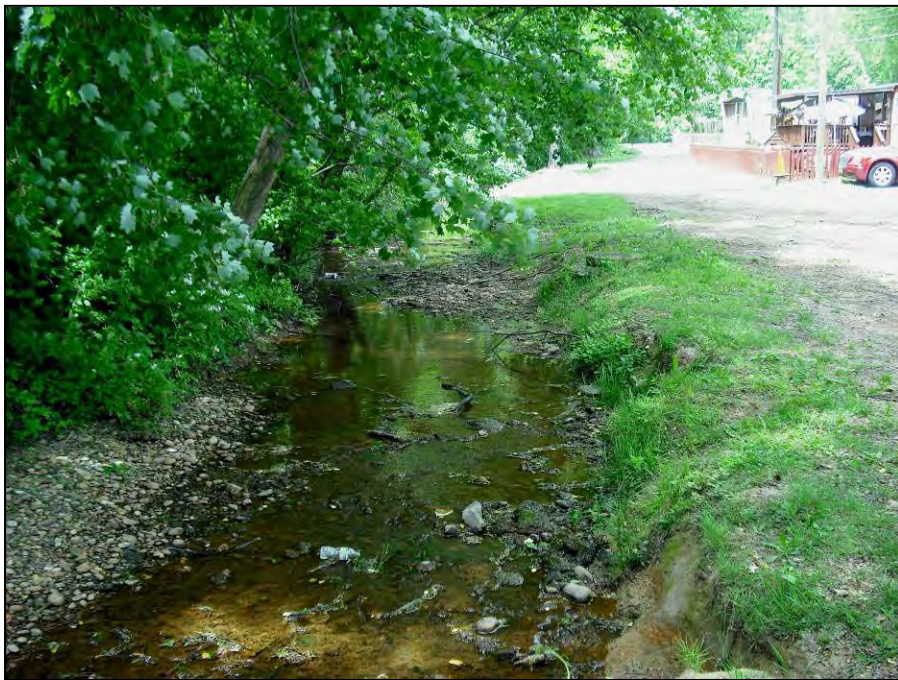


Photo 476: Loss of riparian buffer and stream corridor encroachment along Reach 645-A.



Photo 483: Loss of riparian buffer along Reach 645-A.



Photo 484: Debris clogging the CMP culvert at the downstream end of Reach 645-A.

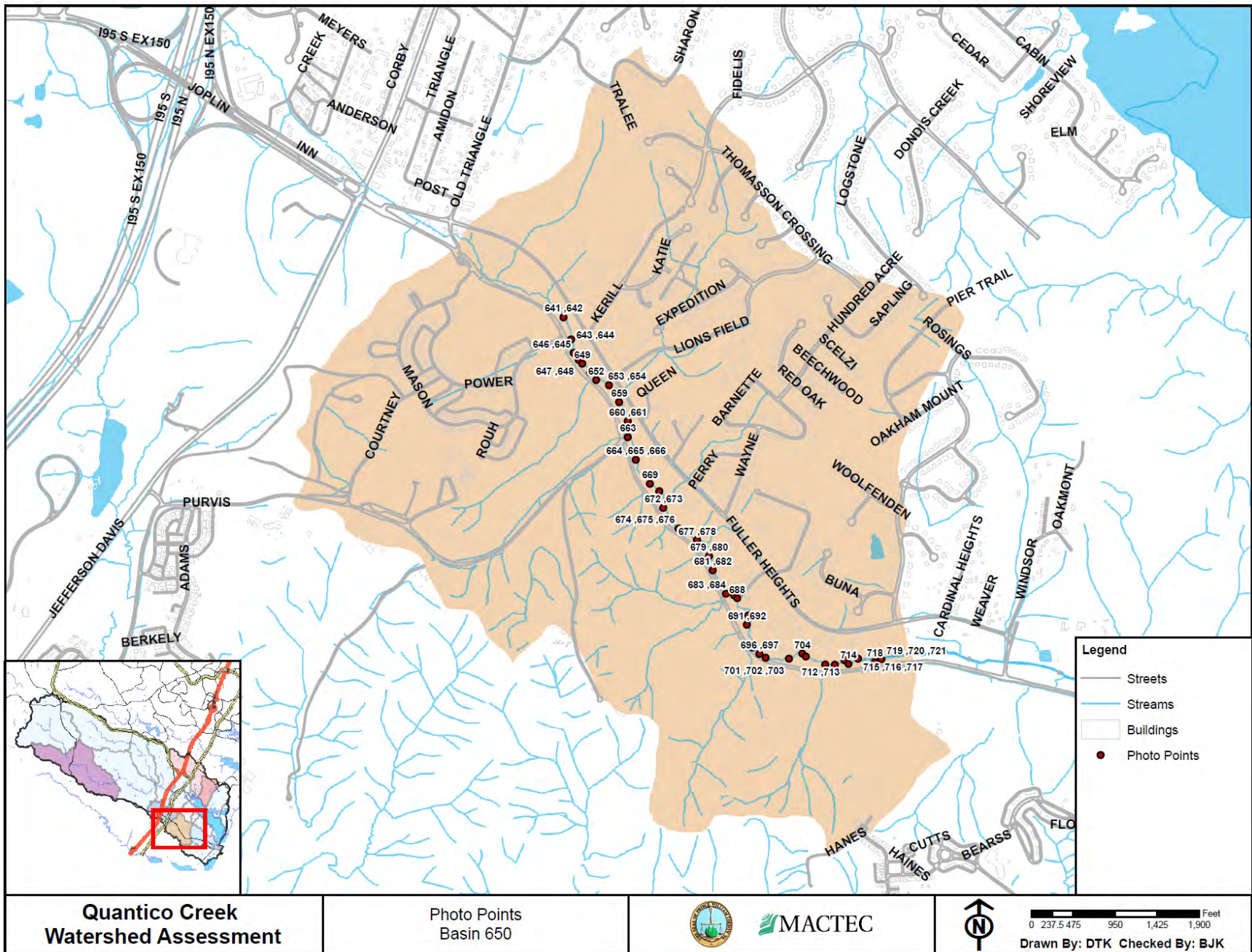




Photo 654: Streambank erosion along the upper portion of Reach 650-A.



Photo 660: Garbage and debris dumping along the top of the bank of Reach 650-A.