



CAPITAL IMPROVEMENT PROGRAM INTERACTIVE MAP USER GUIDE

PROJECT TABS

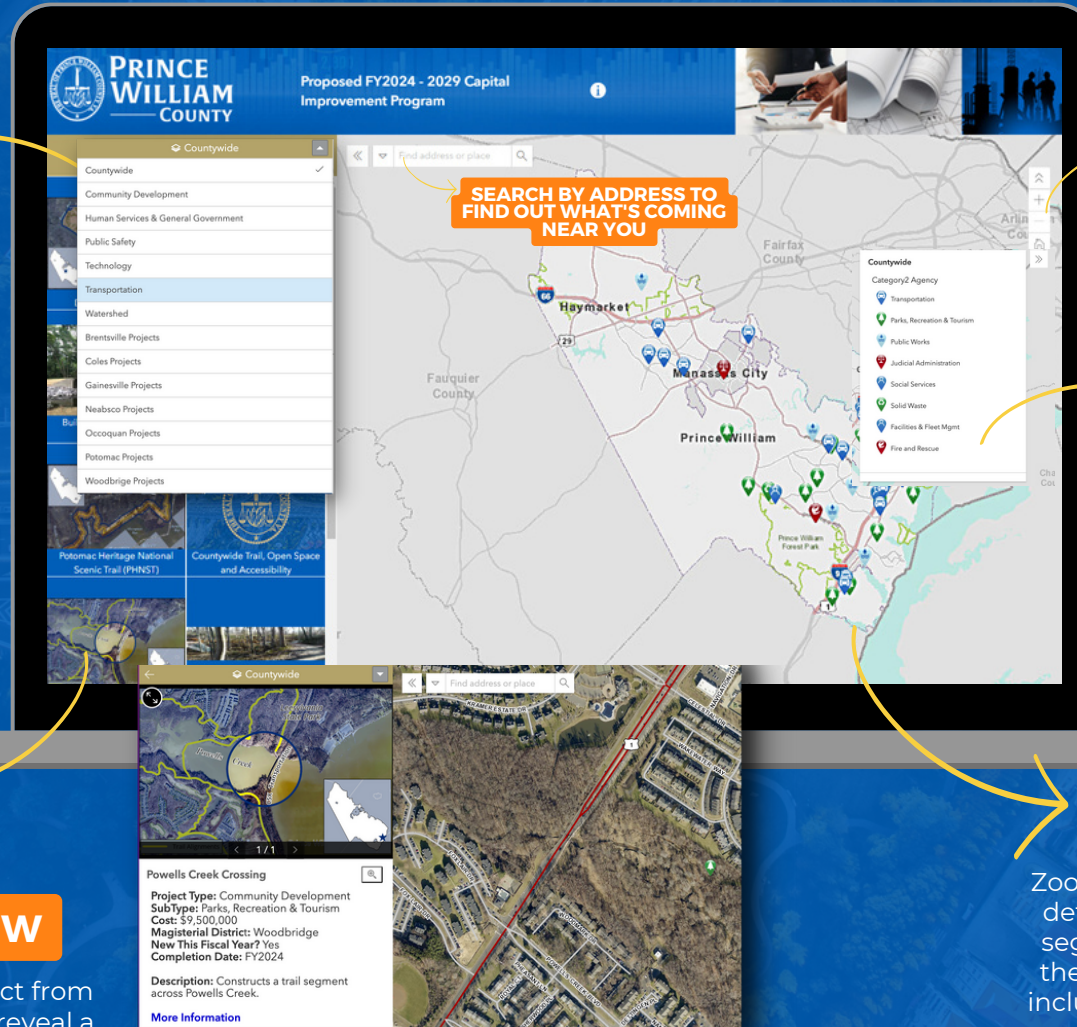
The CIP projects are broken up into multiple sections by functional and magistrate district areas. Projects that fall in these specific areas can be easily accessed by clicking one of the choices from drop down menu found towards top of application, underneath the banner.

SIDE MENU

Each CIP project can be found on the left-hand side of the application. Each is indicated by a small thumbnail photo, as well as the project name.

FULL VIEW

Clicking each project from the side menu will reveal a brief description about that projects in a window that appears on the map



NAVIGATION WHEEL

Use your fingers for mobile view or mouse to navigate through the map. Features such as zoom-in, zoom-out and home allows for a easier transition and viewing of the projects.

KEY ICONS

Use your mouse scroll wheel to zoom-in, zoom-out, or left-click to pan around the map to go to your desired location. You can also use the list icon at the bottom to provide a drop down menu of all the icons and meaning.

THE MAP

Zoom in feature allows for a detailed projects with line segments associated with them (roads and trails) are included on the map to give an approx. visual of the extent of that particular project.