



Education



NORTHERN VIRGINIA COMMUNITY COLLEGE

Student centered. Community focused.

Prince William County is home to a variety of public and private educational entities, ranging from preschools to universities. While each of these entities contributes to the Education goal, the public entities have the most direct ties to the County. Prince William County Schools (PWCS), Northern Virginia Community College (NVCC) and George Mason University (GMU) each have strategic plans that outline their individual goals for the near future. In an effort to maximize the partnerships between the County and these entities, the County's Strategic Plan incorporates outcomes from the various strategic plans that are of most interest to the community at large.



2013-2016 STRATEGIC PLAN OUTCOMES

Education

Goal Statement: The County will provide an educational environment rich in opportunities to increase educational attainment for workforce readiness, postsecondary education, and lifelong learning.

Prince William County Schools

- By 2016 the high school graduation rate will increase from 88% to 90%.
- By 2016 the percentage of students scoring at an advanced Standards of Learning (SOL) level in each subject area will increase from 25% to 50%.
- By 2016 the percentage of graduates passing one or more advanced exam (Advanced Placement, International Baccalaureate, or Cambridge) will increase from 31% to 40%.
- By 2016 the percentage of graduates with a Governors, Career and Technical Education, Advanced Mathematics and Technology, or Civic Seal will increase from 46% to 65%.
- By 2016 the number of dual enrollment (PWCS/NVCC) students will increase to more than the baseline of 301.
- By 2016 the ratio of National Board Certified Teachers to students will increase from 1:701 to 1:500.
- By 2016 the percentage of accredited schools will be 100%, even with changes in the accreditation standards.
- By 2016 the average elementary school classroom size will decrease to less than the baseline of 23.2 students per classroom.
- By 2016 the average middle school classroom size will decrease to less than the baseline of 30.7 students per classroom.
- By 2016 the average high school classroom size will decrease to less than the baseline of 29.7 students per classroom.

George Mason University

- By 2016 GMU will improve its ranking in the National Science Foundation Annual Research and Development Survey from 153, on its way to a goal of being in the top 125 schools.

Northern Virginia Community College¹

- By 2016 the number of County residents/employees taking workforce development classes at the Manassas and Woodbridge NVCC campuses will increase from 3,617 to 4,340.

¹ The County provides operating and capital support to NVCC. In FY 14 the rate is \$2.00 per capita for a total contribution of \$863,113.



Prince William County Public Schools



VISION

In Prince William County Public Schools, all students will learn to their fullest potential. The education of each student will be individualized and developmentally appropriate. Student learning will be enhanced by national, global, and multicultural perspectives. Students who graduate from Prince William County Public Schools will possess the basic knowledge and skills that will assure their proficiency in problem solving and the use of technology. Graduates will have a desire to learn and the skills to be life-long learners. They will be responsible citizens. All graduates will be competent to enter the work world and prepared to pursue advanced educational opportunities.

MISSION STATEMENT

Providing a world-class education.



EXPENDITURE AND REVENUE SUMMARY



	FY 11 Adopted	FY 12 Adopted	FY 13 Adopted	FY 14 Adopted	% Change Adopt 13/ Adopt 14
A. Expenditures					
1 Operating Fund	\$760,300,629	\$811,314,119	\$865,926,328	\$887,971,916	2.55%
2 Debt Service Fund	\$58,127,770	\$67,512,184	\$70,996,885	\$74,899,758	5.50%
3 Construction Fund	\$88,455,000	\$84,059,000	\$105,639,000	\$209,620,417	98.43%
4 Food Service Fund	\$32,463,820	\$33,629,487	\$38,278,750	\$42,866,062	11.98%
5 Warehouse Fund	\$5,000,000	\$5,250,000	\$5,250,000	\$5,500,000	4.76%
6 Facilities Use Fund	\$1,423,587	\$1,408,700	\$1,487,573	\$1,388,658	-6.65%
7 Self Insurance Fund	\$5,291,670	\$5,291,670	\$5,364,315	\$4,531,035	-15.53%
8 Health Insurance Fund	\$66,823,692	\$73,235,554	\$75,793,949	\$79,482,633	4.87%
9 Regional School Fund	\$33,824,760	\$33,900,309	\$34,583,749	\$40,793,831	17.96%
10 Gov School @ Innovation Pk	\$0	\$900,743	\$707,500	\$777,000	9.82%
11 SACC Program Fund	\$0	\$401,814	\$496,950	\$630,000	26.77%
Total Schools	\$1,051,710,928	\$1,116,903,580	\$1,204,524,999	\$1,348,461,310	11.95%
Total Designated Funding Sources	\$1,016,222,003	\$1,089,350,264	\$1,151,038,283	\$1,201,251,494	4.36%
Net (Increase)/Decrease to Fund Balance	\$35,488,925	\$27,553,316	\$53,486,716	\$147,209,816	175.23%

MAJOR ISSUES

- A. **The School Budget** is handled independently from those budgets reviewed by the County Executive. The School Board, which is elected by the citizens of Prince William County, submits its budget request directly to the Board of County Supervisors (BOCS). The BOCS then reviews the proposed budget through work sessions with the School Board. The adopted FY 14 budget for the Prince William County Public Schools includes a total local County transfer of \$472,837,075. Of this amount, \$472,184,450 is transferred from the County’s general fund and \$652,625 is transferred from the capital fund for the Schools share of Cable TV grant revenue. The County’s general fund transfer includes \$470,827,490 which is the Schools’ share of general revenue in accordance with the amended County/Schools general revenue agreement and \$1,356,960 in federal government reimbursements to the County associated with Qualified School Construction Bonds (the debt service is paid by the Schools).
- B. **The Revenue Sharing Agreement** between the Board of County Supervisors and the School Board was amended as part of the FY 2014 Budget adoption to maintain the local County transfer at the advertised tax rate. Beginning in FY 14, the Schools will receive 57.23% of general revenues (less recordation tax as discussed in the Budget Summary section) and the County will receive 42.77%.
- C. **The Growth in Student Enrollment** continues to be a major issue. Student enrollment is currently growing at a rate of 3% per year while the total county population is growing at 1.5% per year. The School Board estimates that almost 2,100 additional students will enroll in FY 14, bringing the total student enrollment to just under 86,000. The 2,100 increase in enrollment adds \$20 million in operation costs and \$6.6 million in debt service cost per year. Student class size is at the maximum number permitted under state law. Enrollment is estimated to grow by more than 11,000 between FY 14-18.



D. **The Commonwealth Cost of Competing Adjustment (COCA)** is state formula funding for education which has a locality adjustment for schools in Northern Virginia due to the higher cost of living. For FY 14, the state cut \$5.2 million from the Prince William County Schools annual allocation. It is projected that the COCA will be further reduced by the Commonwealth when the FY 2015-2016 biennium budget is developed.

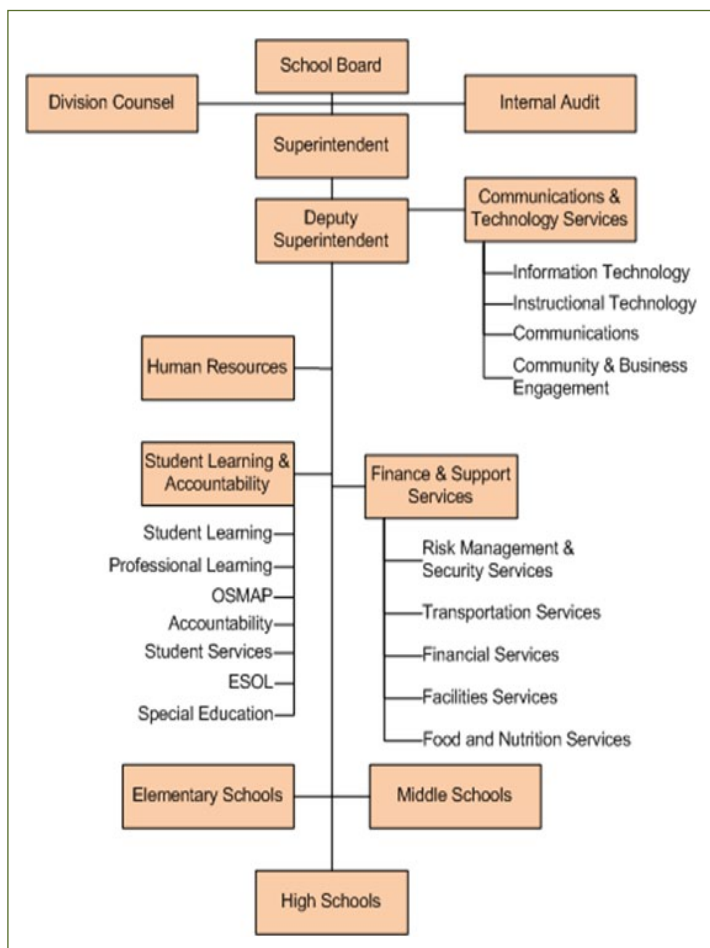
ORGANIZATION

Prince William County Public Schools (PWCS) is organized to focus on meeting the needs of its projected 85,926 students while managing 93 schools. It is an efficient and well-managed organization of about 10,400 employees.

PWCS is governed by eight elected School Board members. The members are elected to four-year terms. One member represents each of the county’s seven magisterial districts and the chairman serves at large. The School Board is charged by Virginia law and the regulations of the Virginia Board of Education to establish guidelines and rules that will ensure the proper administration of the county’s school programs.

The Superintendent works closely with the Deputy Superintendent and the associate superintendents to oversee the day-to-day operations of the schools and support services. Principals and support department heads report to the associate superintendents.

The School Division operates under a site-based management philosophy where schools and departments have significant authority to plan and budget resources to meet Division and school/department goals and objectives. Each school and department is held accountable for successfully meeting goals and objectives.



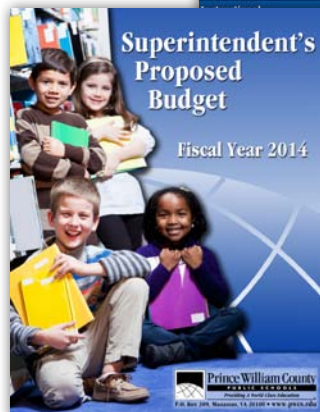


FIVE YEAR ACCOMPLISHMENTS

- Received exemplary rating and Divisionwide accreditation as a quality school system by the Southern Association of Colleges and Schools Council on Accreditation and School Improvement, 2007, 2012
- Launched the Governor's School @ Innovation Park, in concert with George Mason University and Manassas City and Manassas Park City Public Schools, providing advanced STEM study and research
- Raised on-time student graduation rate to approximately 90 percent
- Implemented Teacher Incentive Performance Awards Program to enhance teaching and achievement in schools with economically disadvantaged student populations
- Increased students taking Advanced Placement, International Baccalaureate, and Cambridge exams by 107 percent since 2005
- Added high-speed Internet connections and expanded use of digital instructional technology
- Established formalized business partnerships in every school – over 1,000 Divisionwide
- Completed major renewals of 10 schools in the last five years at a cost of \$63 million
- Built nine new schools and nine additions, costing \$326 million and adding 8,986 student spaces

MAJOR AWARDS

- Governor's Award for Educational Excellence, 2009, 2010, 2011, 2012
- Virginia Board of Education Index of Performance Awards, 2009, 2011, 2012
- Excellence in Education Award, Virginia Tech School of Education, 2007, 2011
- National STEM Education and Cyberlearning Model School, 2012
- All eligible Prince William County Public high schools are ranked among the top eight percent in the United States, "The Washington Post" High School Challenge, 2005–2012
- Certified Green School Division, Virginia School Boards Association, 2009, 2010, 2011
- Best of the Web Award for K–12 Education Website, Center for Digital Education, 2012
- 13 Gold Award of Distinction schools, HealthierUS School Challenge, USDA, 2012
- 100 Best Communities for Young People, America's Promise Alliance and ING, 2010–2012
- Meritorious Budget Award, Association of School Business Officials, 1997–2012
- Distinguished Budget Presentation Award, Government Finance Officers Association, 2000–2011



For more information on the PWC Schools visit www.pwcs.edu.



PRINCE WILLIAM COUNTY PUBLIC SCHOOLS

Elementary Schools

- Alvey E.S.
- Antietam E.S.
- Ashland E.S.
- Bel Air E.S.
- Belmont E.S.
- Bennett E.S.
- Bristow Run E.S.
- Buckland Mills E.S.
- Cedar Point E.S.
- Coles E.S.
- Dale City E.S.
- Dumfries E.S.
- Ellis E.S.
- Enterprise E.S.
- Featherstone E.S.
- Fitzgerald E.S.
- Glenkirk E.S.
- Gravely E.S.
- Henderson E.S.
- Kerrydale E.S.
- Kilby E.S.
- King E.S.
- Lake Ridge E.S.
- Leesylvania E.S.
- Loch Lomond E.S.
- Marshall E.S.
- Marumsco Hills E.S.
- McAuliffe E.S.
- Minnieville E.S.
- Montclair E.S.
- Mountain View E.S.
- Mullen E.S.
- Neabsco E.S.
- Nokesville E.S.
- Occoquan E.S.
- Old Bridge E.S.
- Pattie E.S.
- Penn E.S.
- Piney Branch E.S.
- Potomac View E.S.
- River Oaks E.S.
- Rockledge E.S.
- Rosa Parks E.S.
- Signal Hill E.S.
- Sinclair E.S.
- Springwoods E.S.
- Sudley E.S.
- Swans Creek E.S.

- T. Clay Wood E.S.
- Triangle E.S.
- Tyler E.S.
- Vaughan E.S.
- Victory E.S.
- Washington-Reid
- West Gate E.S.
- Westridge E.S.
- Williams E.S.
- Yorkshire E.S.

Middle Schools

- Benton M.S.
- Beville M.S.
- Bull Run M.S.
- Fred M. Lynn M.S.
- Gainesville M.S.
- Godwin M.S.
- Graham Park M.S.
- Lake Ridge M.S.
- Marsteller M.S.
- Parkside M.S.
- Potomac M.S.
- Rippon M.S.
- Ronald Wilson Reagan M.S.
- Saunders M.S.
- Stonewall M.S.
- Woodbridge M.S.

High Schools

- Battlefield H.S.
- Brentsville District H.S.
- Forest Park H.S.
- Freedom H.S.
- Gar-Field H.S.
- Governor's School @ Innovation Park
- Hylton H.S.
- Osbourn Park H.S.
- Patriot H.S.
- Potomac H.S.
- Stonewall Jackson H.S.
- Thomas Jefferson High School for Science & Technology
- Virtual H.S.
- Woodbridge H.S.

Traditional Schools

- Pennington School
- Porter Traditional

Special Education Schools

- Independent Hill School - PACE East Program

PACE

West

- Woodbine Preschool Center

Alternative Schools

- New Directions
- New Dominion

