



DESIGN PUBLIC HEARING ADVERTISEMENT

Devlin Road Widening Project – North
From: University Boulevard (Rte. 840)
To: Jennell Drive (Rte. 1705)
Brentsville Magisterial District

The Prince William County Department of Transportation will conduct a Design Public Hearing for the Devlin Road Widening Project – North (from University Boulevard to Jennell Drive) at **Chris Yung Elementary School (12612 Fog Light Way Bristow, VA 20136)** from 6:00 PM to 8:00 PM on Monday, January 31, 2022. This in-person event is subject to change based on the latest CDC's COVID-19 related health and safety guidelines. **Note that if public schools are closed for any reason, the public hearing will be rescheduled.** The event will be streamed live virtually through the link posted on the Prince William County Department of Transportation website at: <https://www.pwcva.gov/department/transportation>. The Project Team will make a formal presentation beginning at 6:30 PM and will answer questions for the duration of the meeting. Online audience will have the opportunity to submit questions to be included in the Q&A portion of the meeting.

The purpose of this public hearing is to ensure that the public is provided with an opportunity to both review and discuss the proposed improvements and potential impacts to the surrounding properties and to receive public feedback on the current design of the widening project. Tentative project schedule, potential property impacts, right of way policies, and the project's proposed improvements will be discussed at the meeting

The proposed project would widen Devlin Road from University Boulevard (Rte. 840) to Jennell Drive (Rte. 1705) to a divided, four-lane facility with a standard raised median. The project will also provide 5-foot concrete sidewalks and a 10-foot shared-use path. The total project length is approximately 0.7 miles.

In accordance with 23 CFR 771.130(c), a draft Revised Environmental Studies document that has been prepared to assess the project's potential effects upon environmental resources to determine if there are any significant environmental impacts. That draft document, along with technical reports for cultural resources studies (pursuant to Section 106 of the National Historic Preservation Act) and Preliminary Noise Analysis are available for public review at the Prince William County Department of Transportation, 5 County Complex, Suite 290, Prince William, VA, 22192. Please call ahead at 703-792-5276, for staff availability. These documents will also be available for review at the Public Hearing.

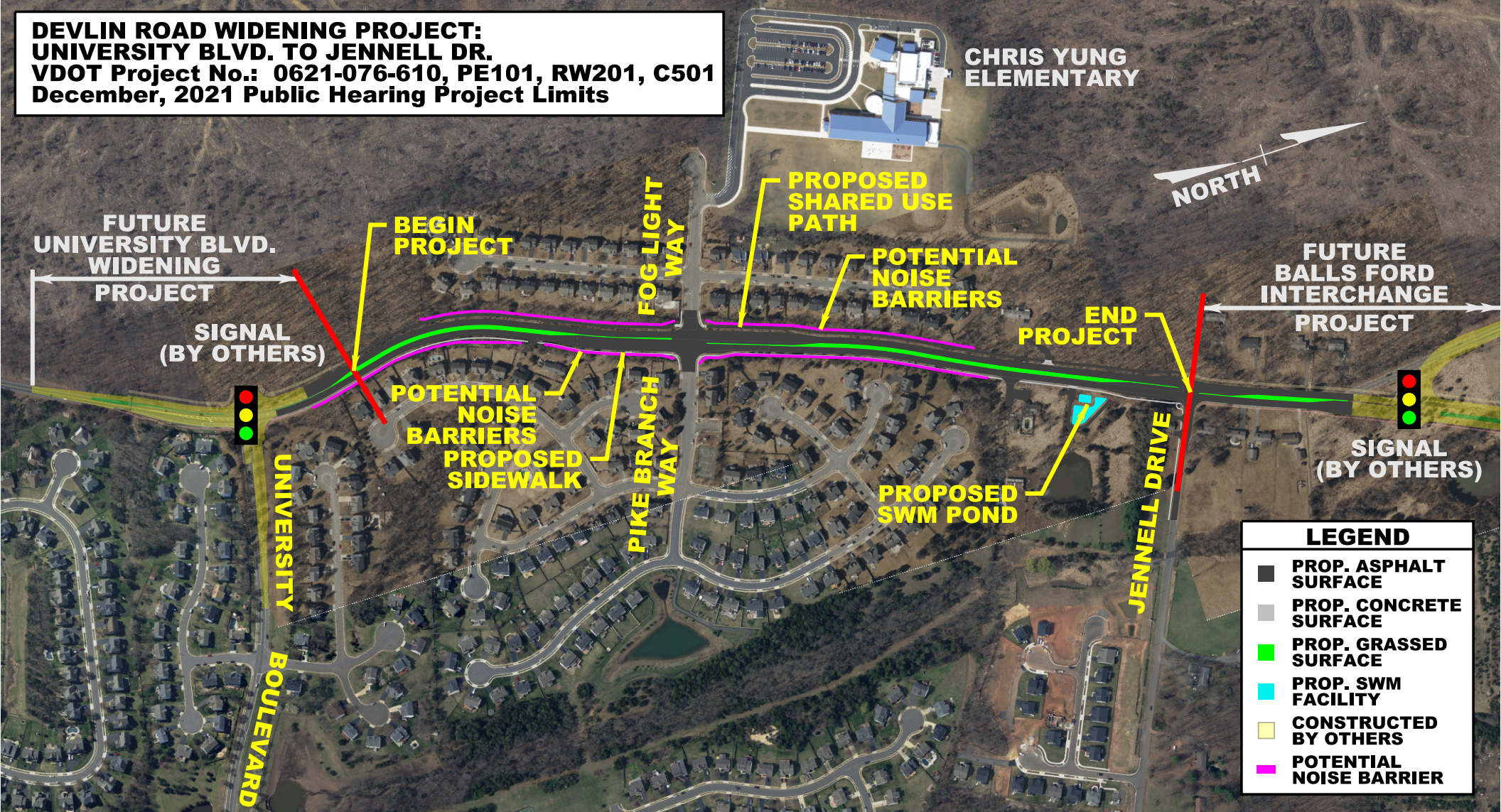
The public can also review the Project information and Design Public Hearing plans including the environmental document on the Prince William County Department of Transportation website at <https://www.pwcva.gov/department/transportation/current-road-projects>.

Please provide your written or verbal comments at the Public Meeting or submit them by February 14, 2022, to Ms. Gladis Arboleda, Project Manager, Prince William County Department of Transportation, at the same address. You may also email your comments to garboleda@pwcgov.org. Please reference "Devlin Widening Public Hearing Comments" in the subject heading.

Prince William County ensures nondiscrimination in all programs and activities in accordance with Title VI and Title VII of the Civil Rights Act of 1964. For information call 703-792-6825.

Accessibility to Persons with Disabilities: This Public Meeting is being held at a public facility accessible to persons with disabilities. Any persons with questions regarding the facility should contact Gladis Arboleda, Prince William County Department of Transportation, 5 County Complex, Suite 290, Prince William, VA 22192, 703-792-5276. Persons needing interpreter services for the deaf must notify Gladis Arboleda no later than Tuesday, January 25, 2022.

**DEVLIN ROAD WIDENING PROJECT:
UNIVERSITY BLVD. TO JENNELL DR.**
VDOT Project No.: 0621-076-610, PE101, RW201, C501
December, 2021 Public Hearing Project Limits



LEGEND	
■	PROP. ASPHALT SURFACE
■	PROP. CONCRETE SURFACE
■	PROP. GRASSED SURFACE
■	PROP. SWM FACILITY
■	CONSTRUCTED BY OTHERS
■	POTENTIAL NOISE BARRIER