

PRINCE WILLIAM COUNTY 2008 Comprehensive Plan Thoroughfare Plan Map

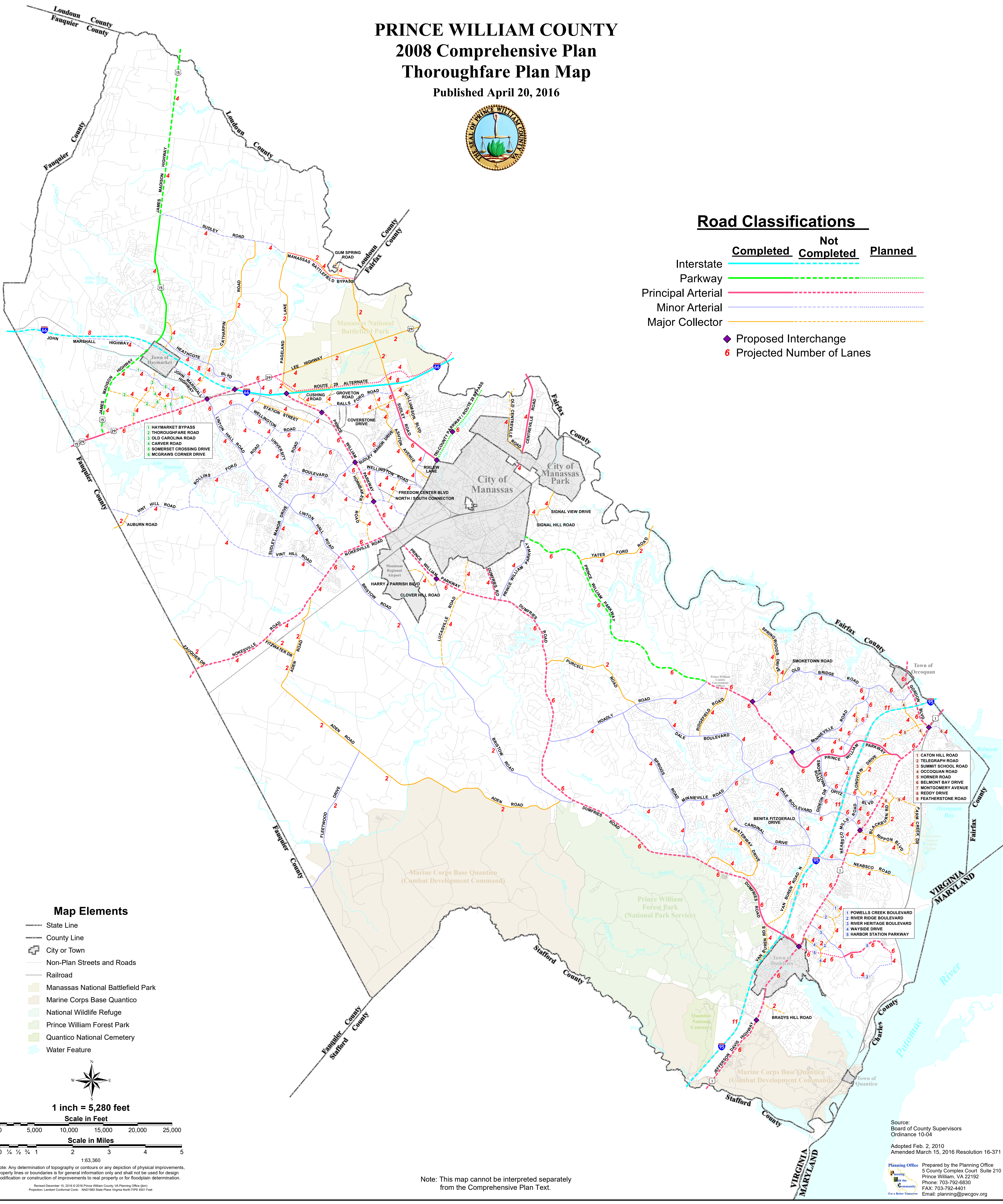
Published April 20, 2016



Road Classifications

| | Completed | Not Completed | Planned |
|--------------------|-----------|---------------|---------|
| Interstate | | | |
| Parkway | | | |
| Principal Arterial | | | |
| Minor Arterial | | | |
| Major Collector | | | |

Proposed Interchange
 Projected Number of Lanes

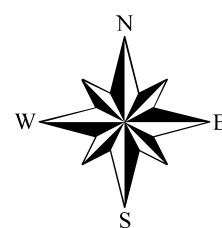


- 1 HAYMARKET BYPASS
- 2 THOROUGHFARE ROAD
- 3 OLD CAROLINA ROAD
- 4 CARVER ROAD
- 5 SOMERSET CROSSING DRIVE
- 6 MCGRAWS CORNER DRIVE

- 1 CATON HILL ROAD
- 2 TELEGRAPH ROAD
- 3 SUMMIT SCHOOL ROAD
- 4 OCCOQUAN ROAD
- 5 HORNER ROAD
- 6 BELMONT BAY DRIVE
- 7 MONTGOMERY AVENUE
- 8 REDDY DRIVE
- 9 FEATHERSTONE ROAD

Map Elements

- State Line
- County Line
- City or Town
- Non-Plan Streets and Roads
- Railroad
- Manassas National Battlefield Park
- Marine Corps Base Quantico
- National Wildlife Refuge
- Prince William Forest Park
- Quantico National Cemetery
- Water Feature



1 inch = 5,280 feet

Scale in Feet



Scale in Miles



Note: Any determination of topography or contours or any depiction of physical improvements, property lines or boundaries is for general information only and shall not be used for design modification or construction of improvements to real property or for floodplain determination.

Note: This map cannot be interpreted separately from the Comprehensive Plan Text.

Source: Board of County Supervisors Ordinance 10-04

Adopted Feb. 2, 2010
Amended March 15, 2016 Resolution 16-371

Prepared by the Planning Office
5 County Complex Court, Suite 210
Prince William, VA 22192
Phone: 703-792-8530
FAX: 703-792-4401
Email: planning@pwco.org