










LEGEND:

-  Travel Lanes
-  Shared Use Path (SUP)
-  Bridge
-  Retaining Walls
-  Existing Right of Way
-  Proposed Right of Way
-  Traffic Signal
-  Continuous Green-T Intersection
-  Existing Signal (to be removed)

Route 234 - Brentsville Road Interchange Public Information Meeting



Prince William County | March 2020



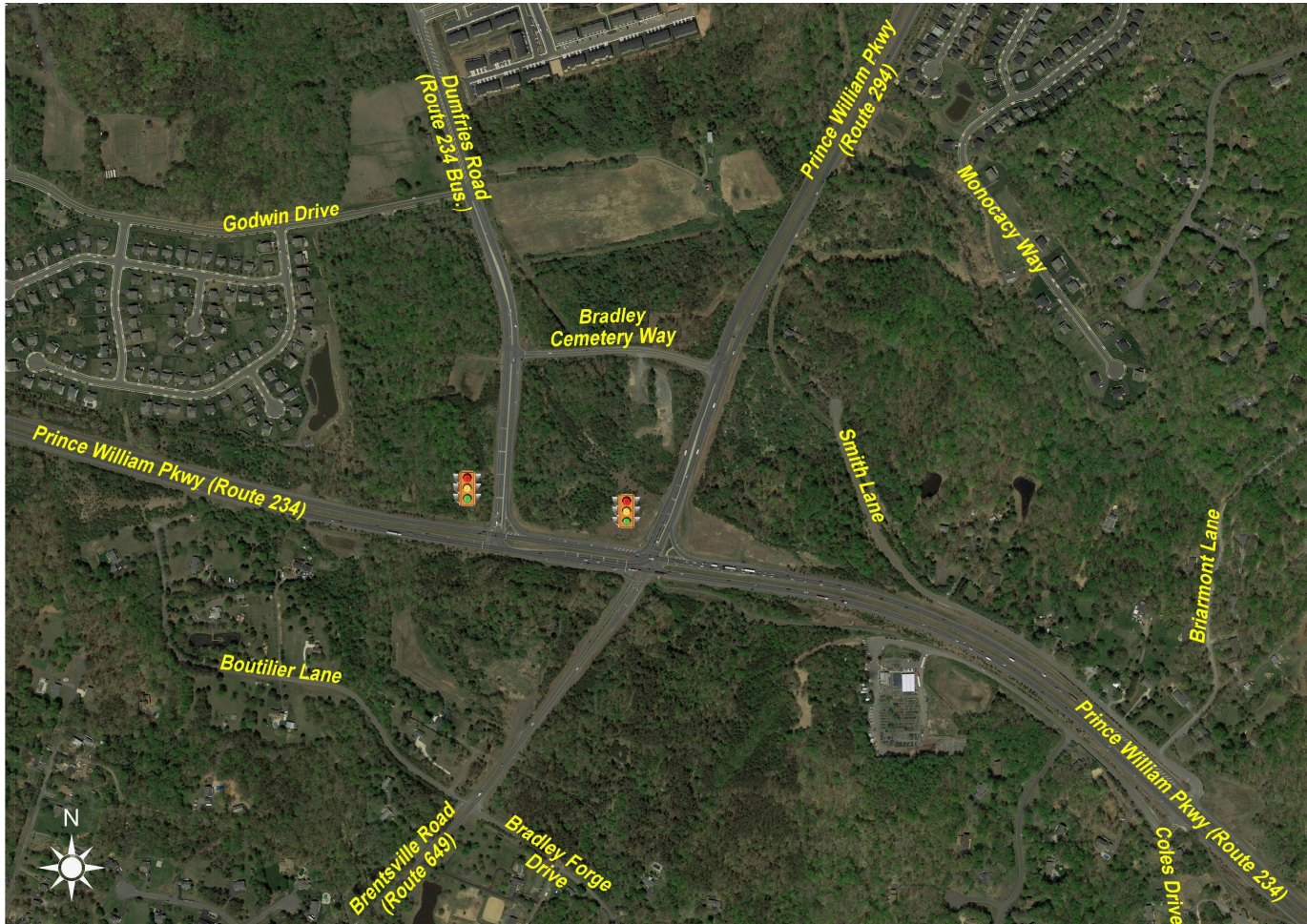
Existing vs Proposed



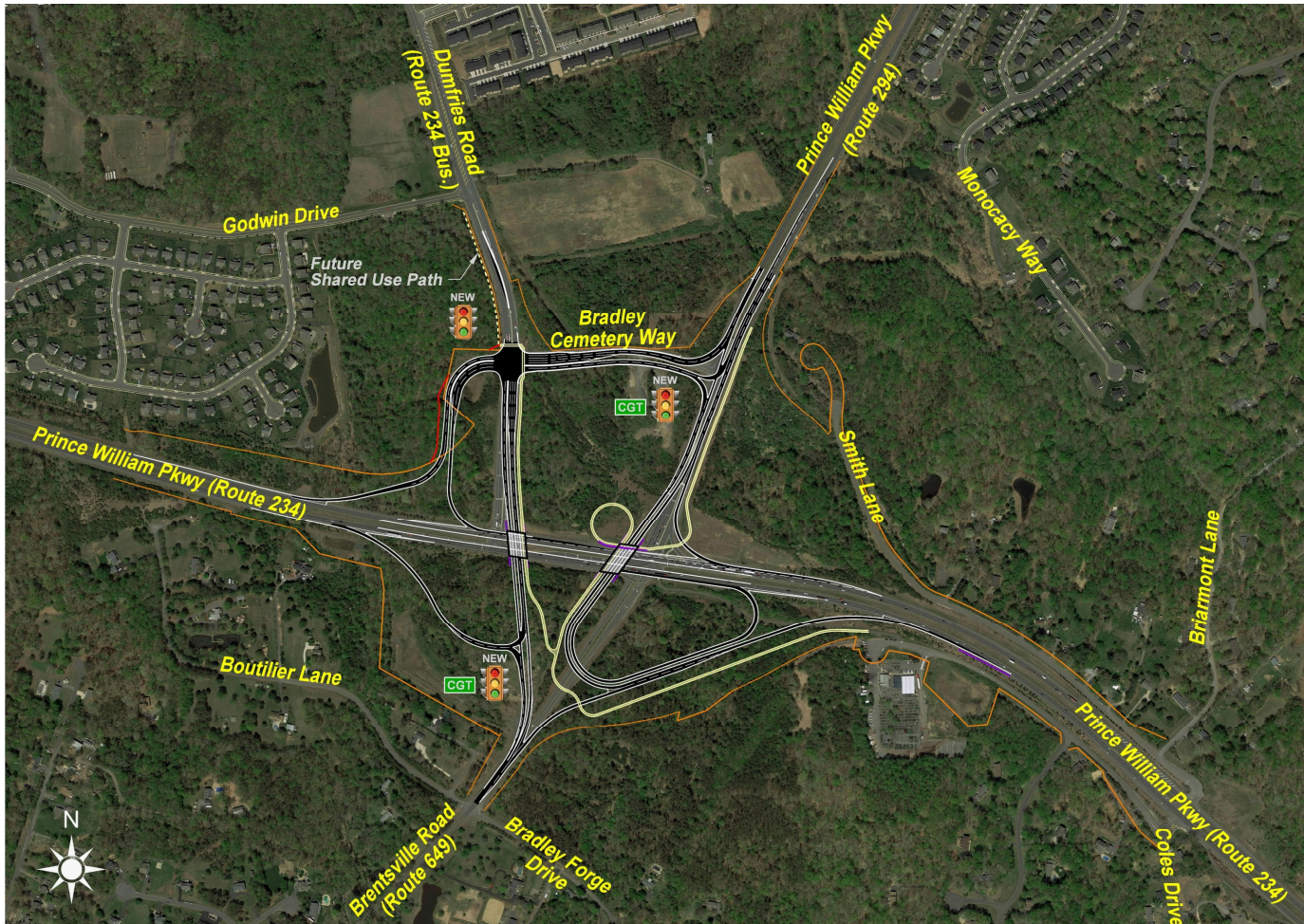
COMPARE YOUR ROUTE TODAY

WITH THAT OF TOMORROW

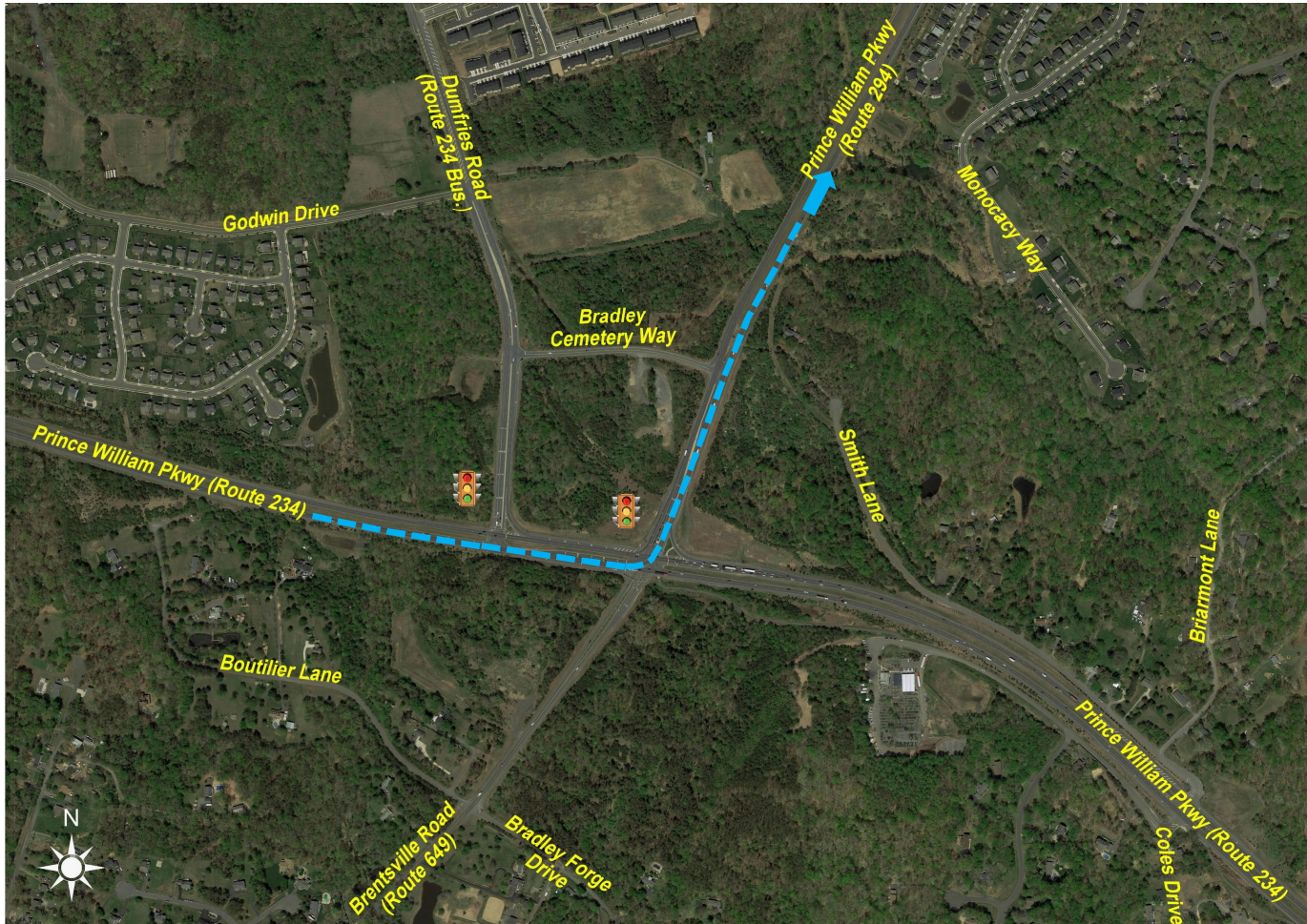
Existing Conditions



Proposed Conditions



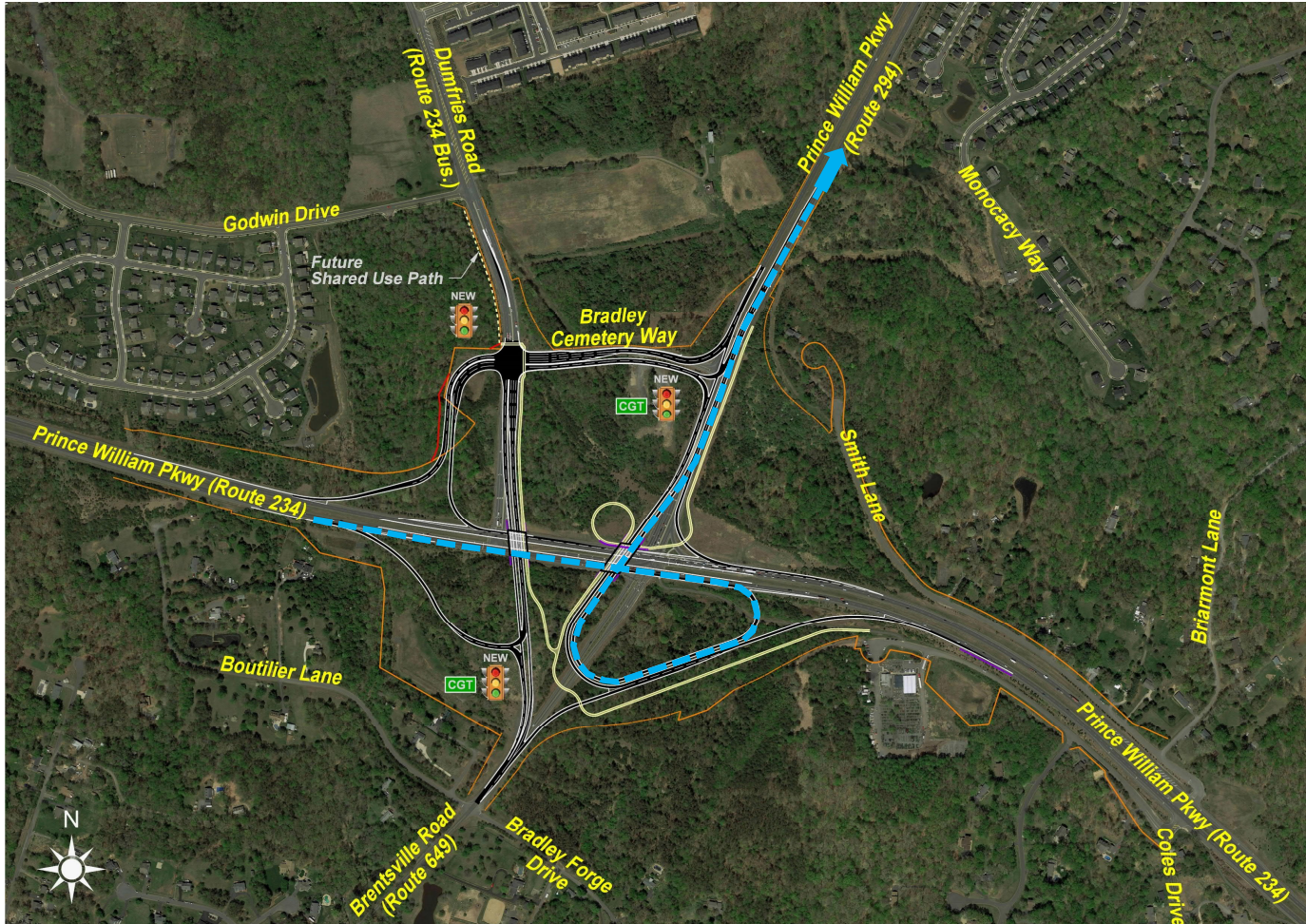
Existing Conditions



From Prince William Pkwy (Rte 234) Eastbound to Prince William Pkwy (Rte 294) Northbound



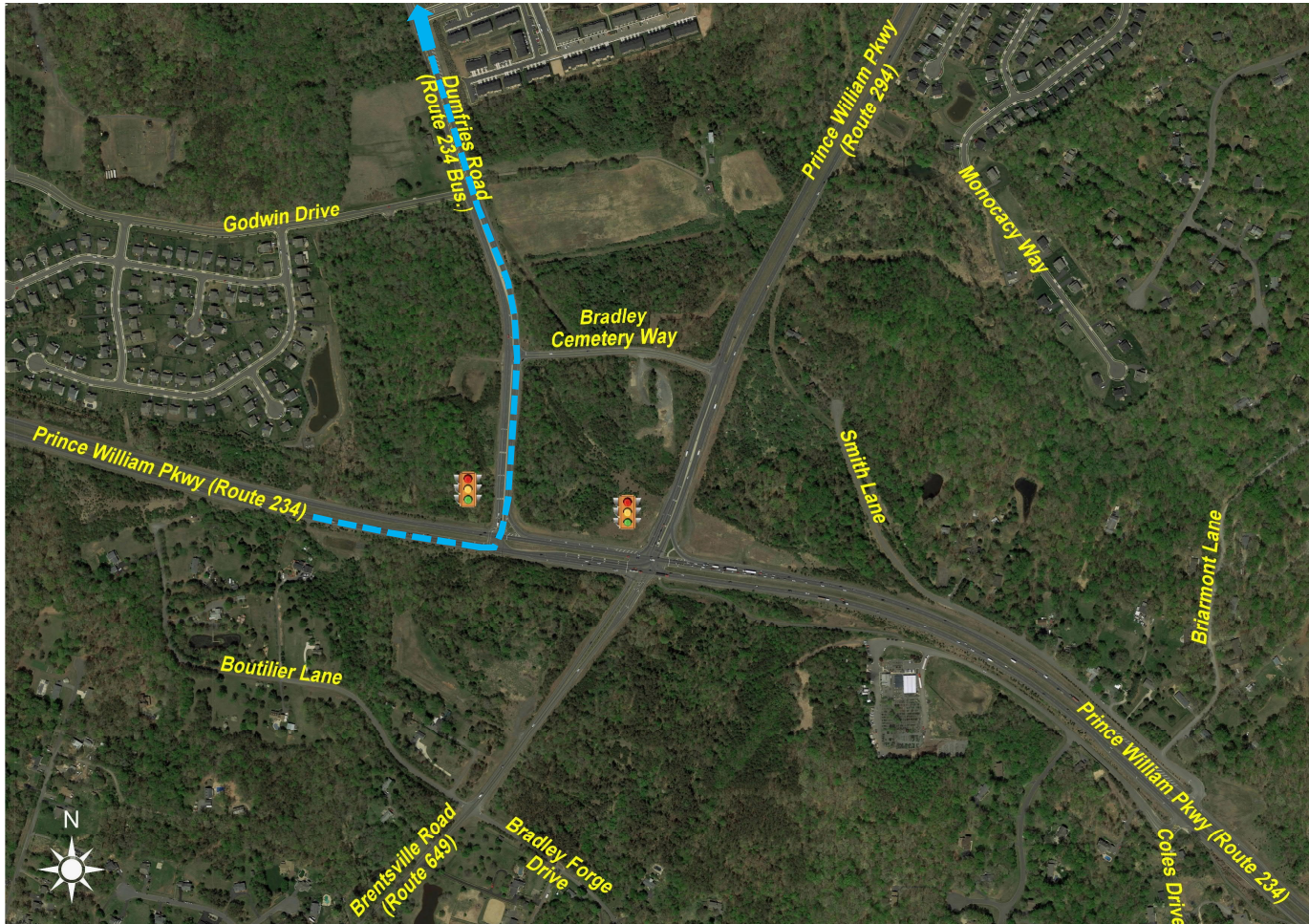
Proposed Conditions



From Prince William Pkwy (Rte 234) Eastbound to Prince William Pkwy (Rte 294) Northbound



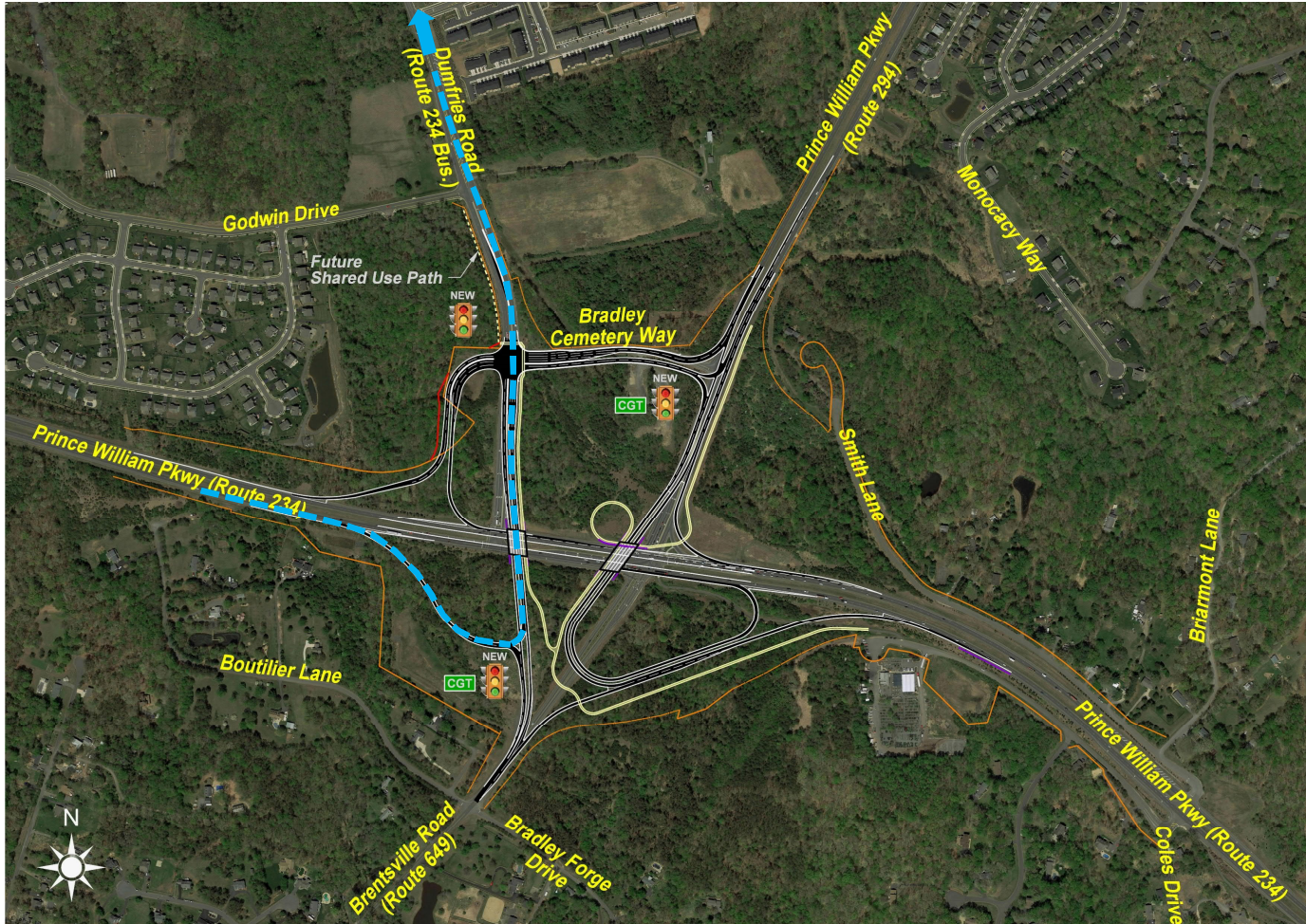
Existing Conditions



From Prince William Pkwy (Rte 234) Eastbound to Dumfries Road (Rte 234 Bus.) Northbound



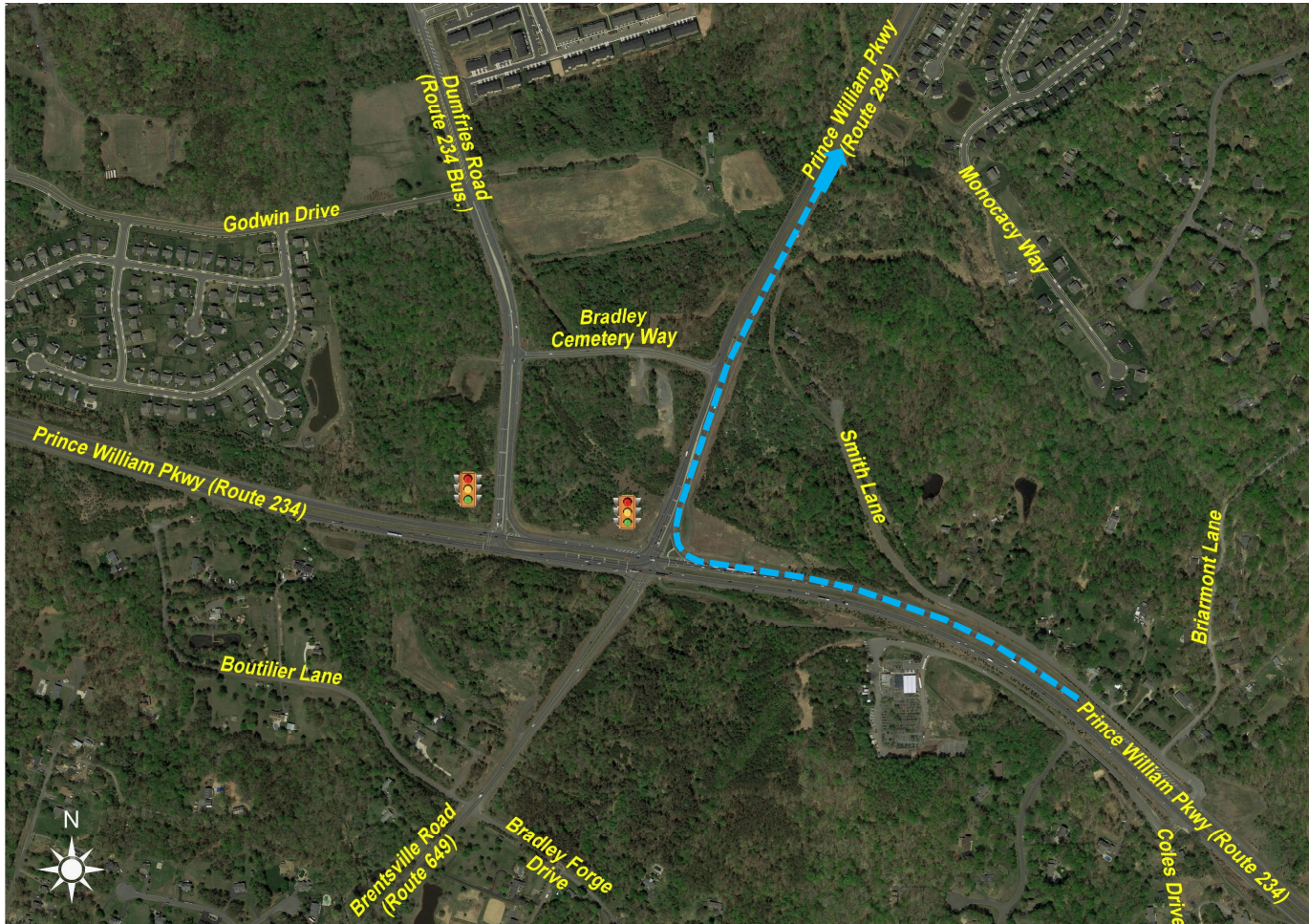
Proposed Conditions



From Prince William Pkwy (Rte 234) Eastbound to Dumfries Road (Rte 234 Bus.) Northbound



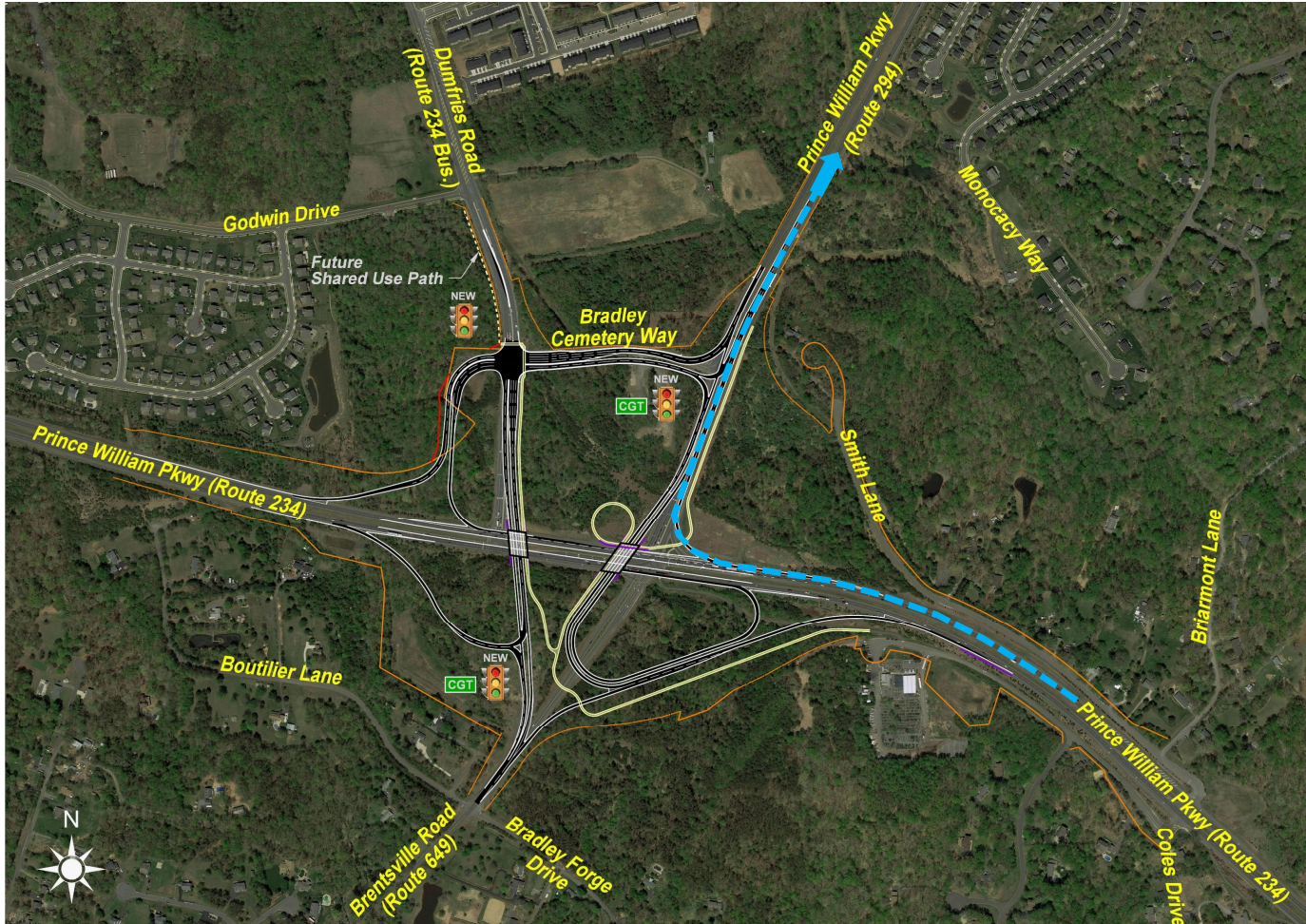
Existing Conditions



From Prince William Pkwy (Rte 234) Westbound to Prince William Pkwy (Rte 294) Northbound



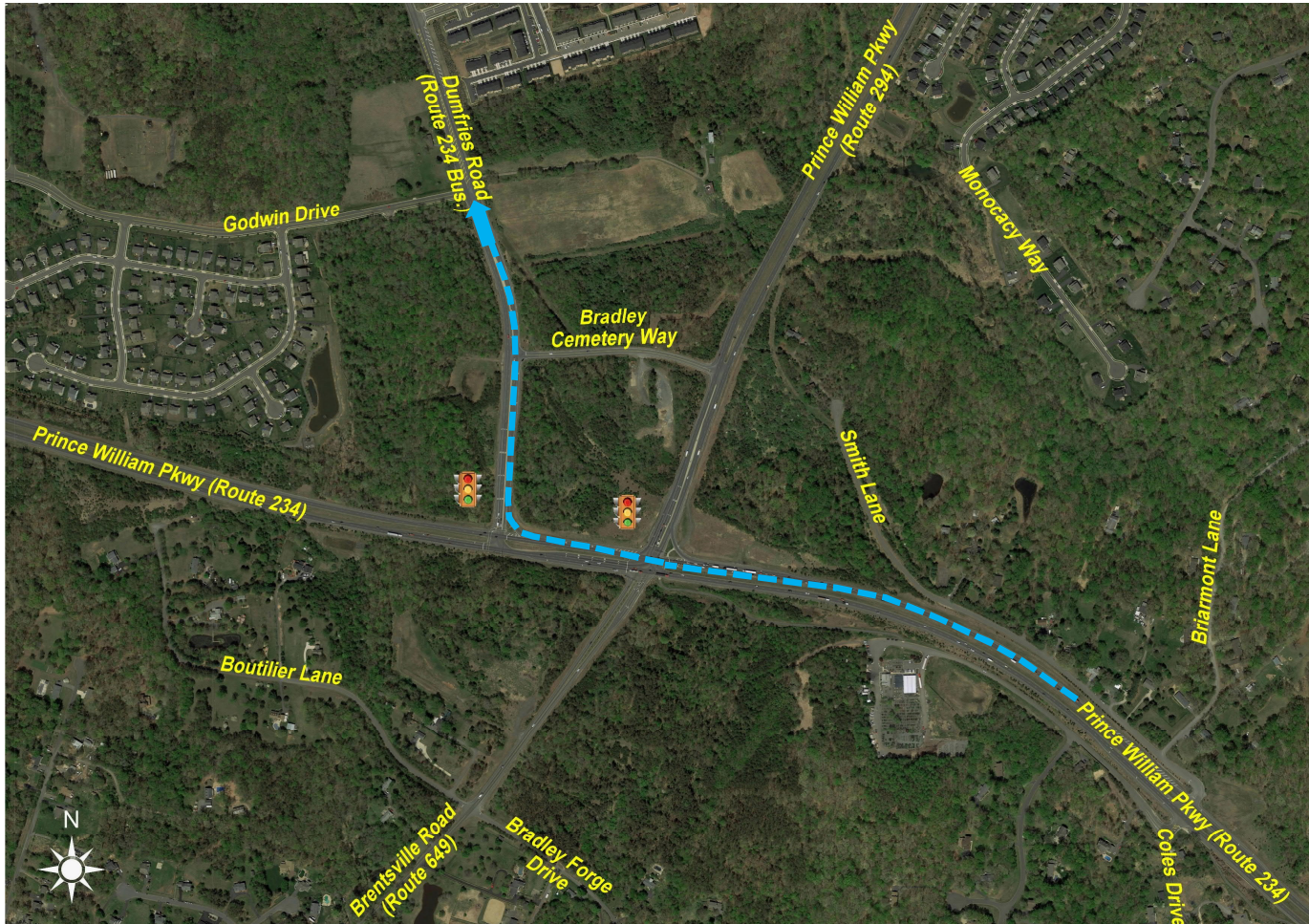
Proposed Conditions



From Prince William Pkwy (Rte 234) Westbound to Prince William Pkwy (Rte 294) Northbound



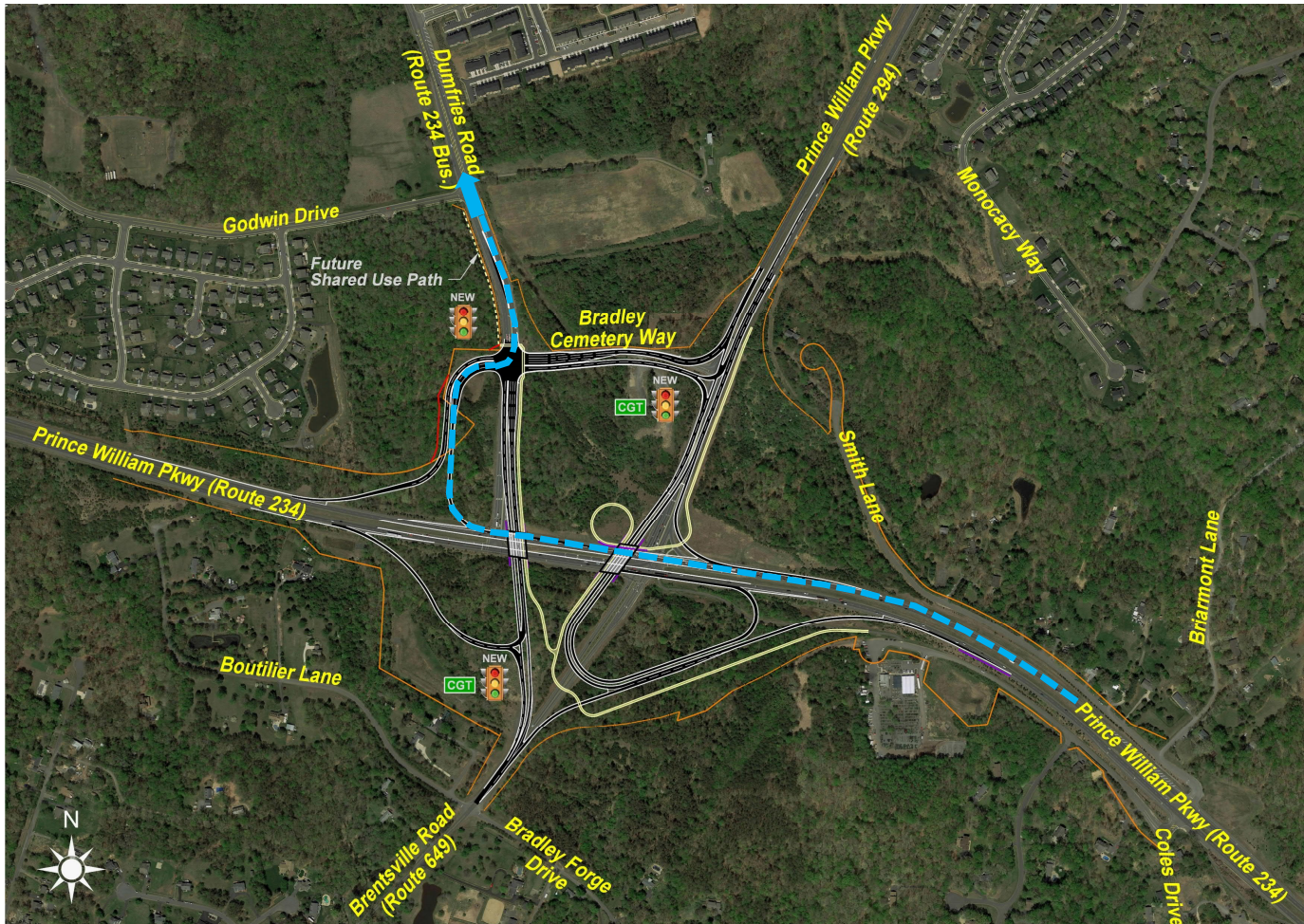
Existing Conditions



From Prince William Pkwy (Rte 234) Westbound to Dumfries Road (Rte 234 Bus.) Northbound



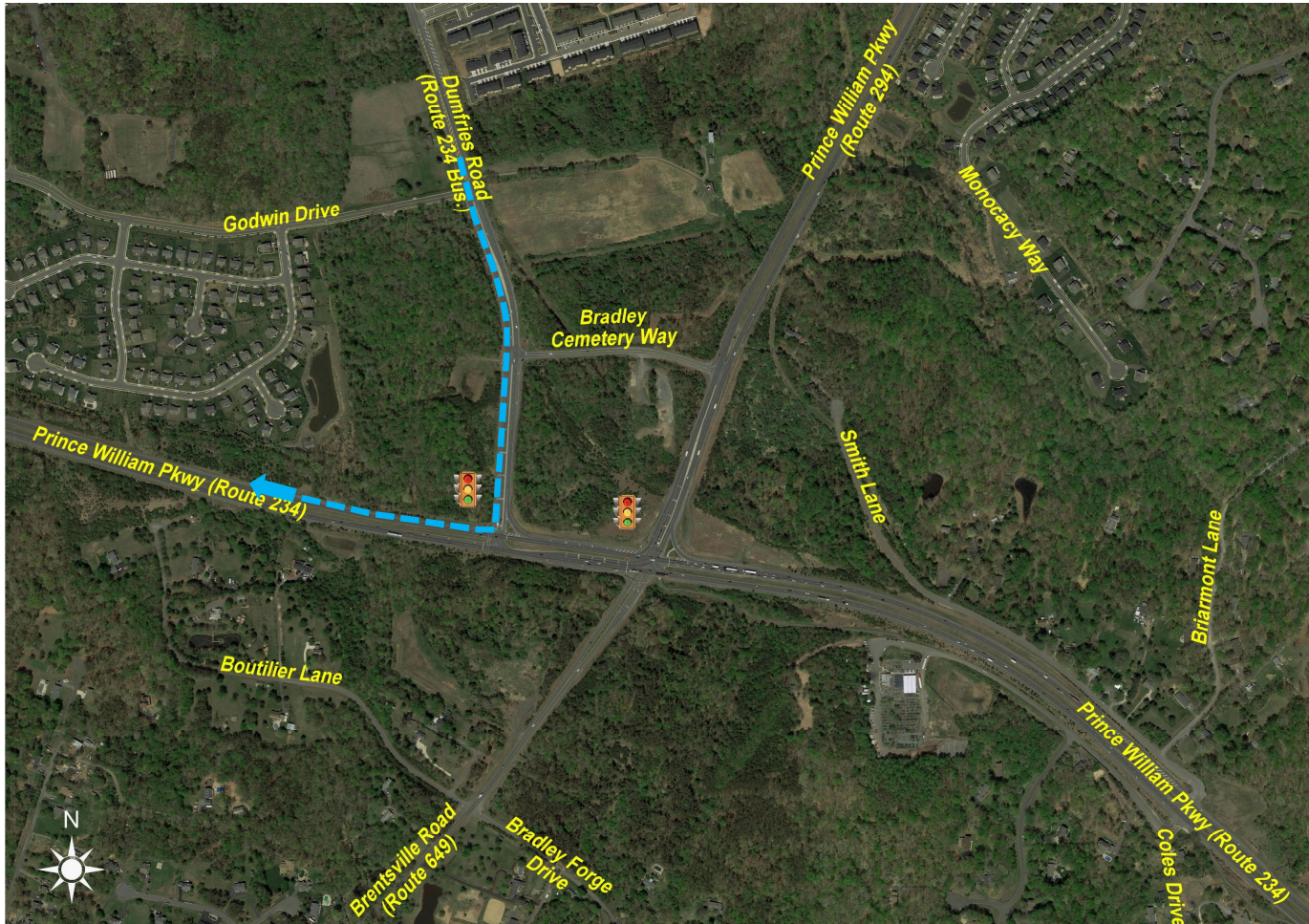
Proposed Conditions



From Prince William Pkwy (Rte 234) Westbound to Dumfries Road (Rte 234 Bus.) Northbound



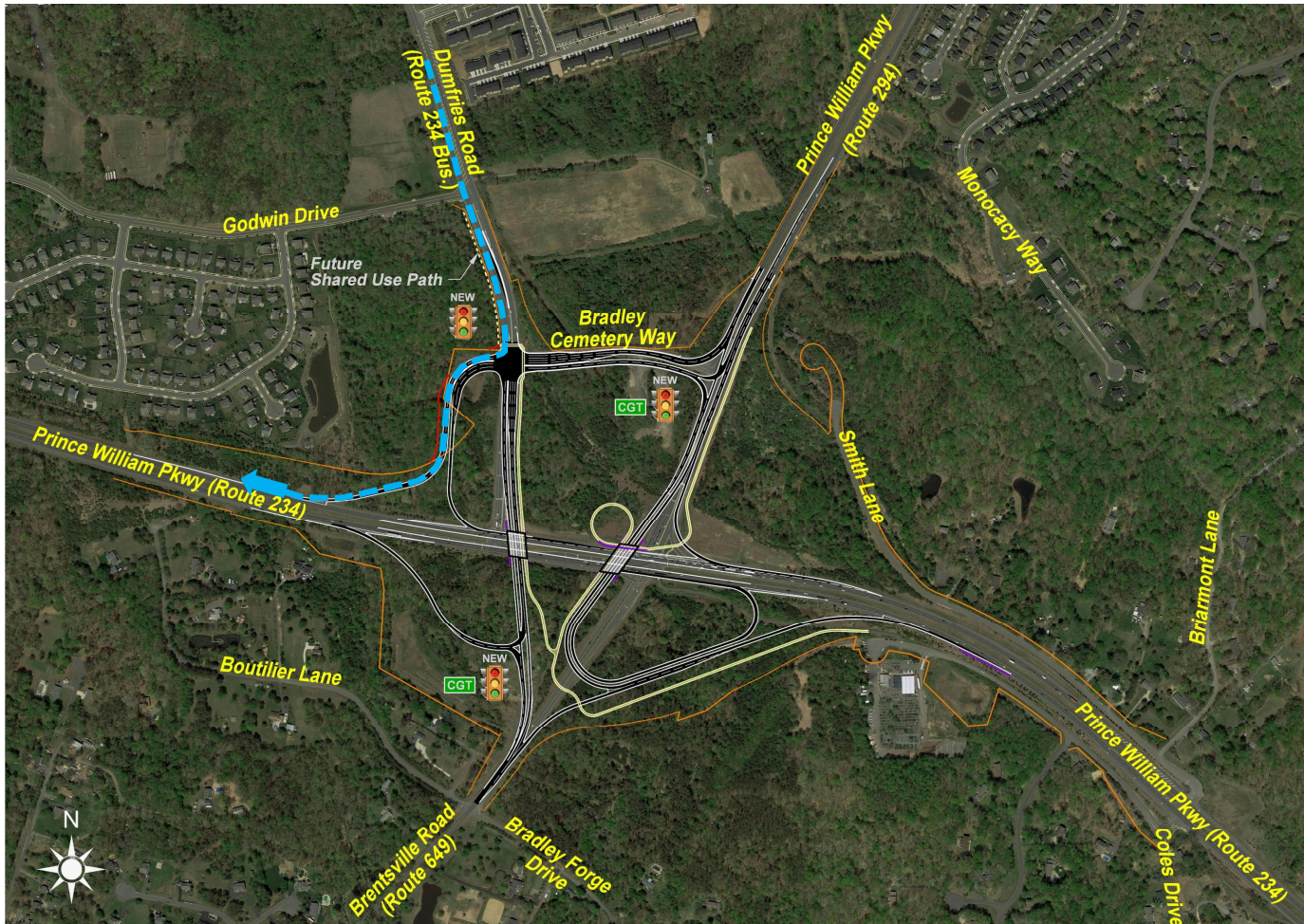
Existing Conditions



From Dumfries Road (Rte 234 Bus.) Southbound to Prince William Pkwy (Rte 234) Westbound



Proposed Conditions



From Dumfries Road (Rte 234 Bus.) Southbound to Prince William Pkwy (Rte 234) Westbound



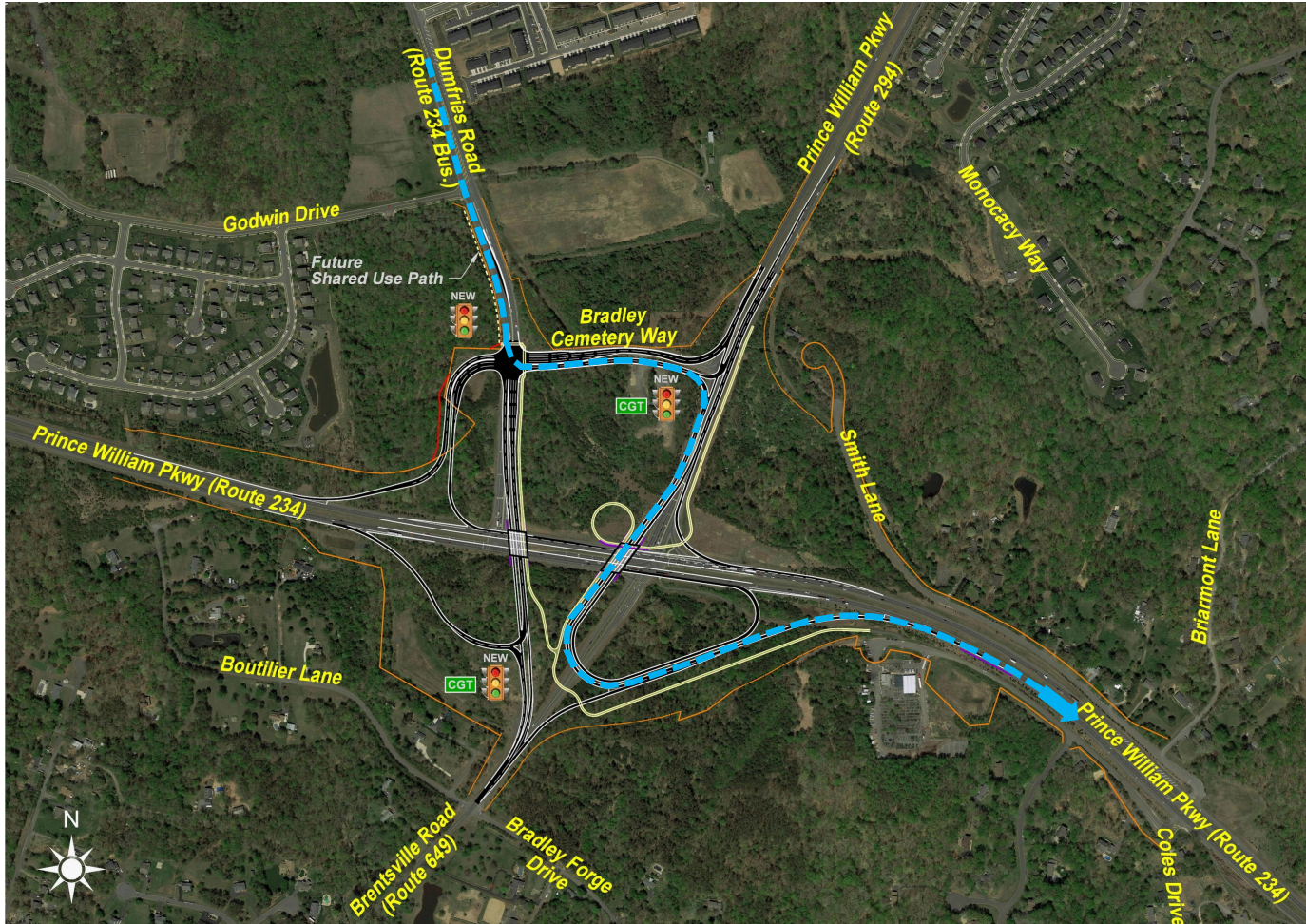
Existing Conditions



From Dumfries Road (Rte 234 Bus.) Southbound to Prince William Pkwy (Rte 234) Eastbound



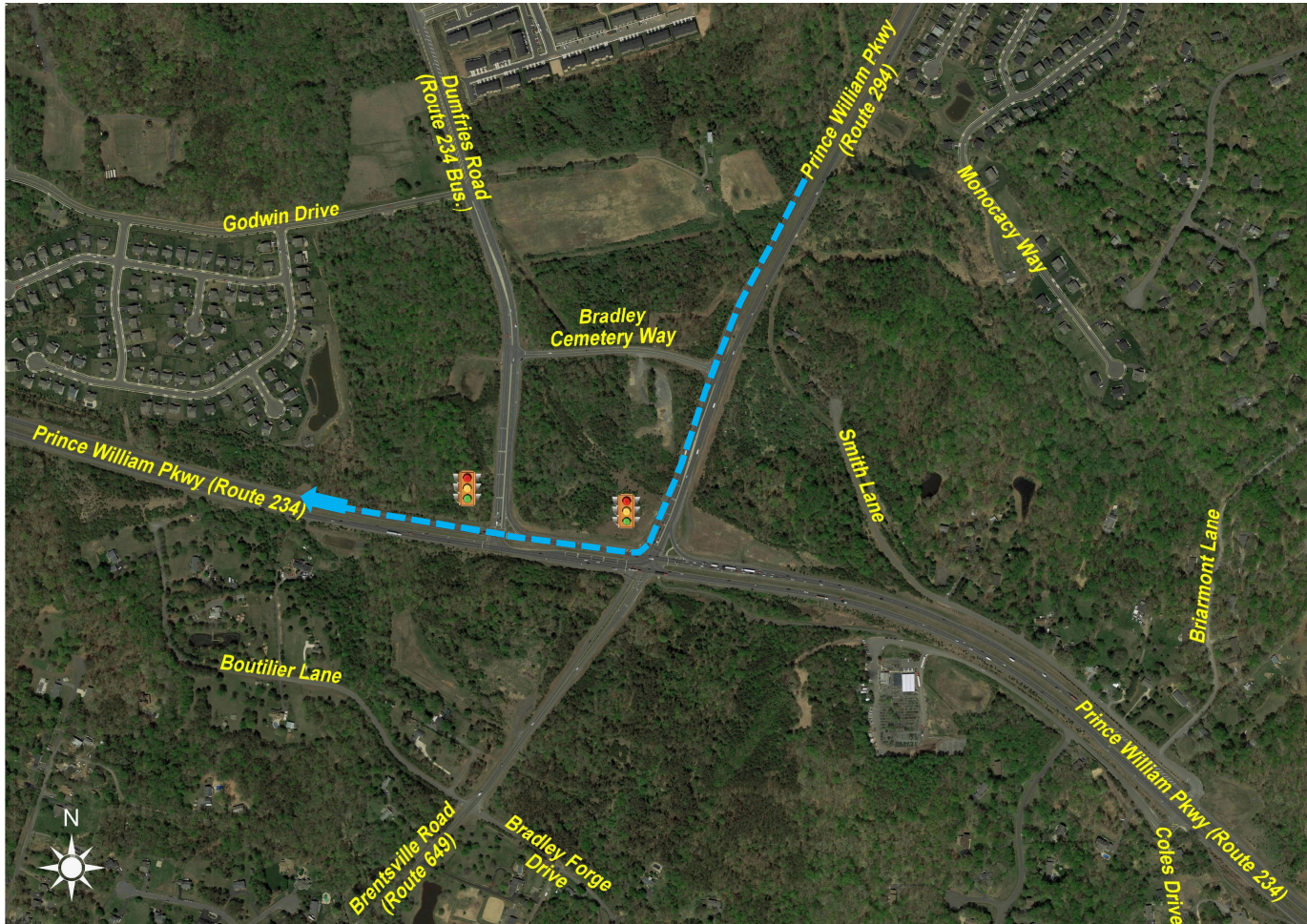
Proposed Conditions



From Dumfries Road (Rte 234 Bus.) Southbound to Prince William Pkwy (Rte 234) Eastbound



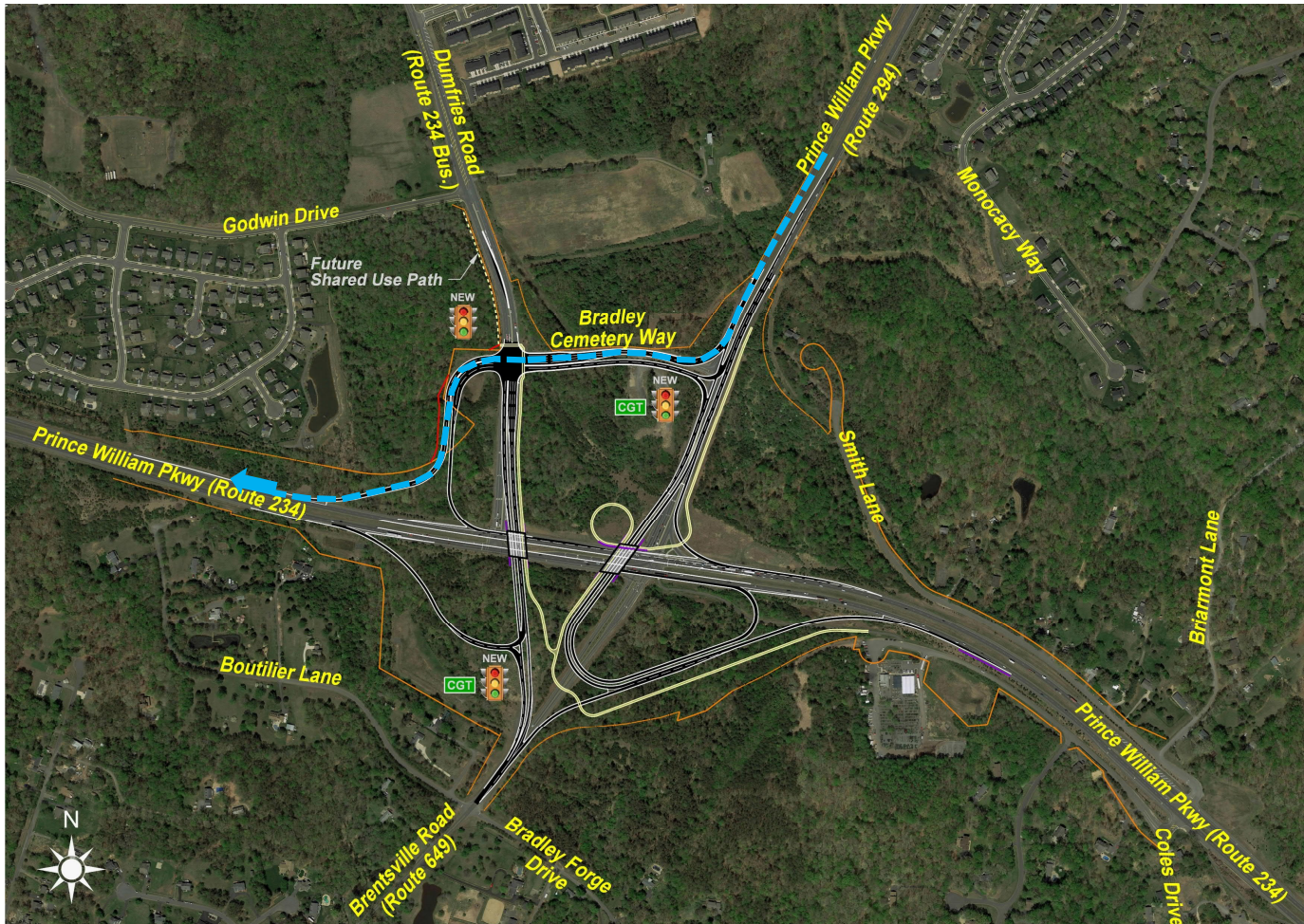
Existing Conditions



From Prince William Pkwy (Rte 294) Southbound to Prince William Pkwy (Rte 234) Westbound



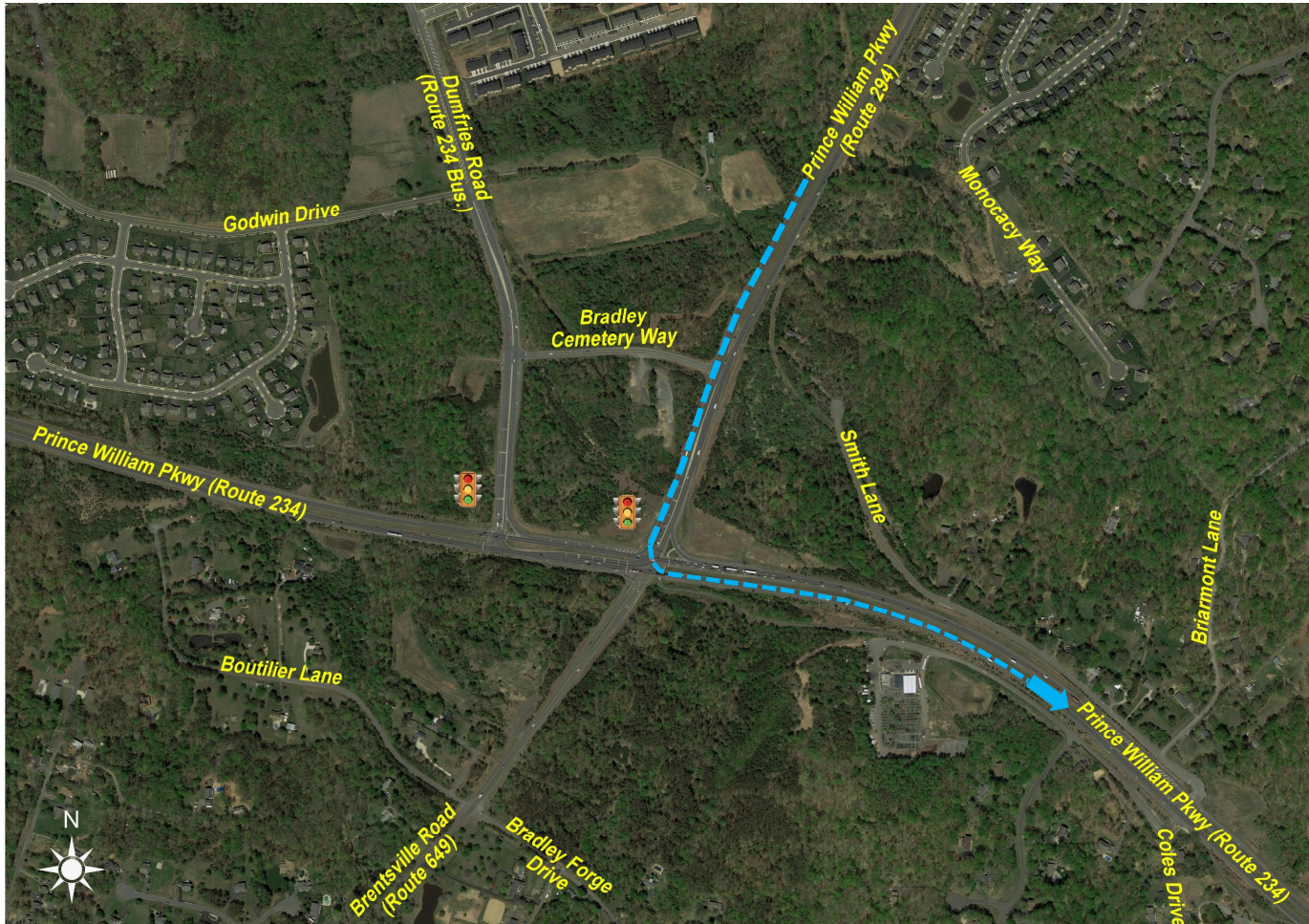
Proposed Conditions



From Prince William Pkwy (Rte 294) Southbound to Prince William Pkwy (Rte 234) Westbound



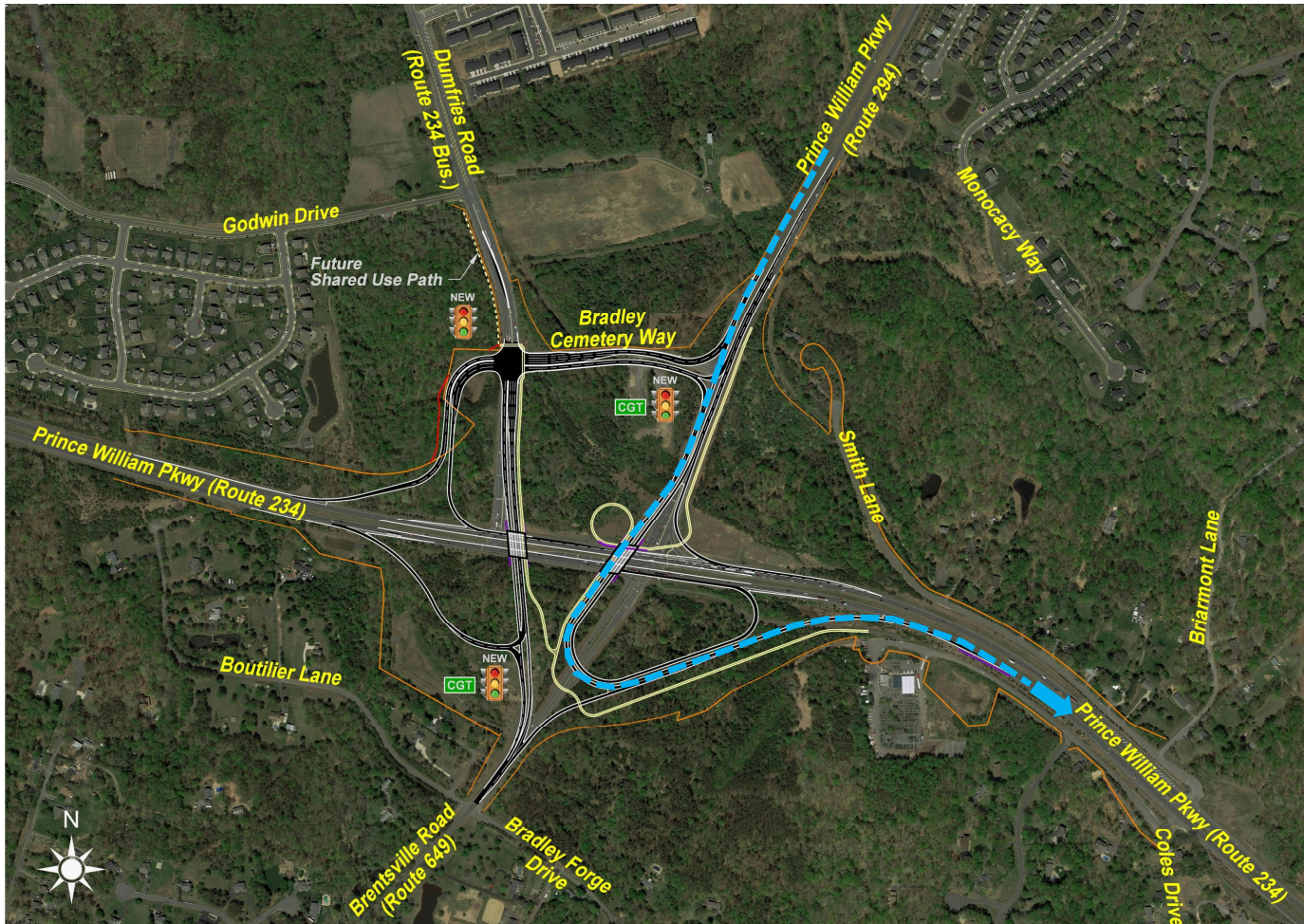
Existing Conditions



From Prince William Pkwy (Rte 294) Southbound to Prince William Pkwy (Rte 234) Eastbound



Proposed Conditions



From Prince William Pkwy (Rte 294) Southbound to Prince William Pkwy (Rte 234) Eastbound



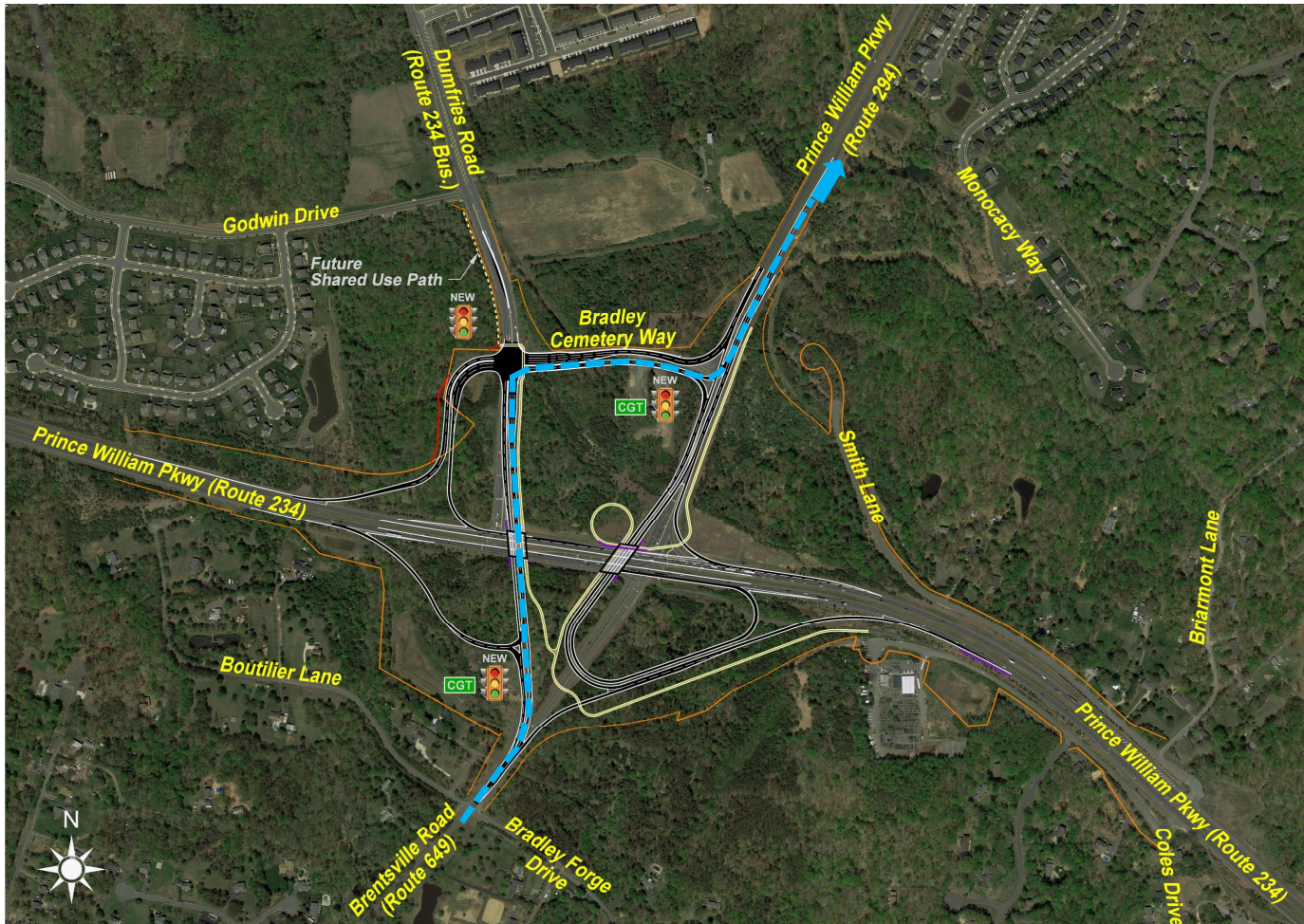
Existing Conditions



From Brentsville Road (Rte 649) Northbound to Prince William Pkwy (Rte 294) Northbound



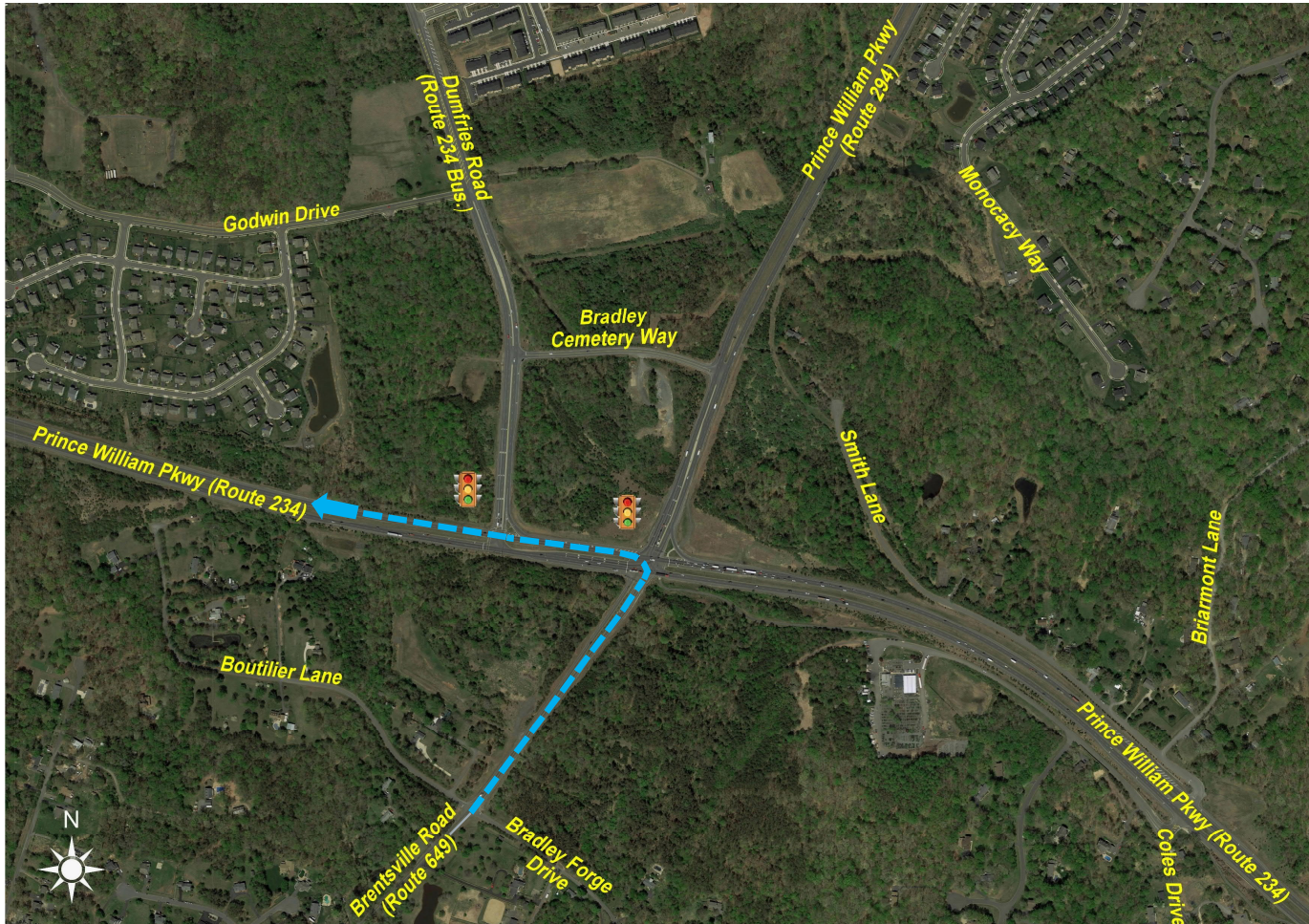
Proposed Conditions



From Brentsville Road (Rte 649) Northbound to Prince William Pkwy (Rte 294) Northbound



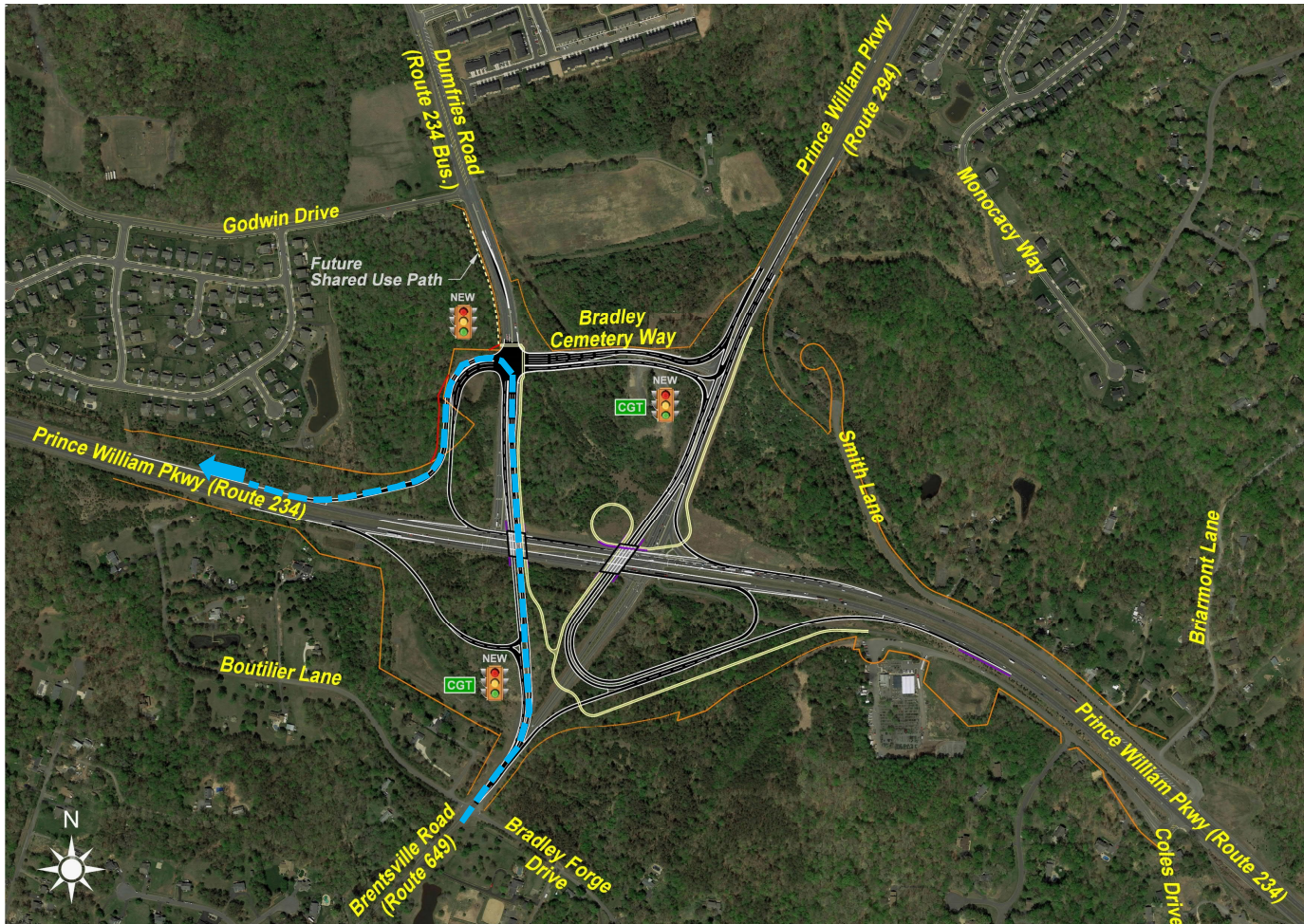
Existing Conditions



From Brentsville Road (Rte 649) Northbound to Prince William Pkwy (Rte 234) Westbound



Proposed Conditions



From Brentsville Road (Rte 649) Northbound to Prince William Pkwy (Rte 234) Westbound



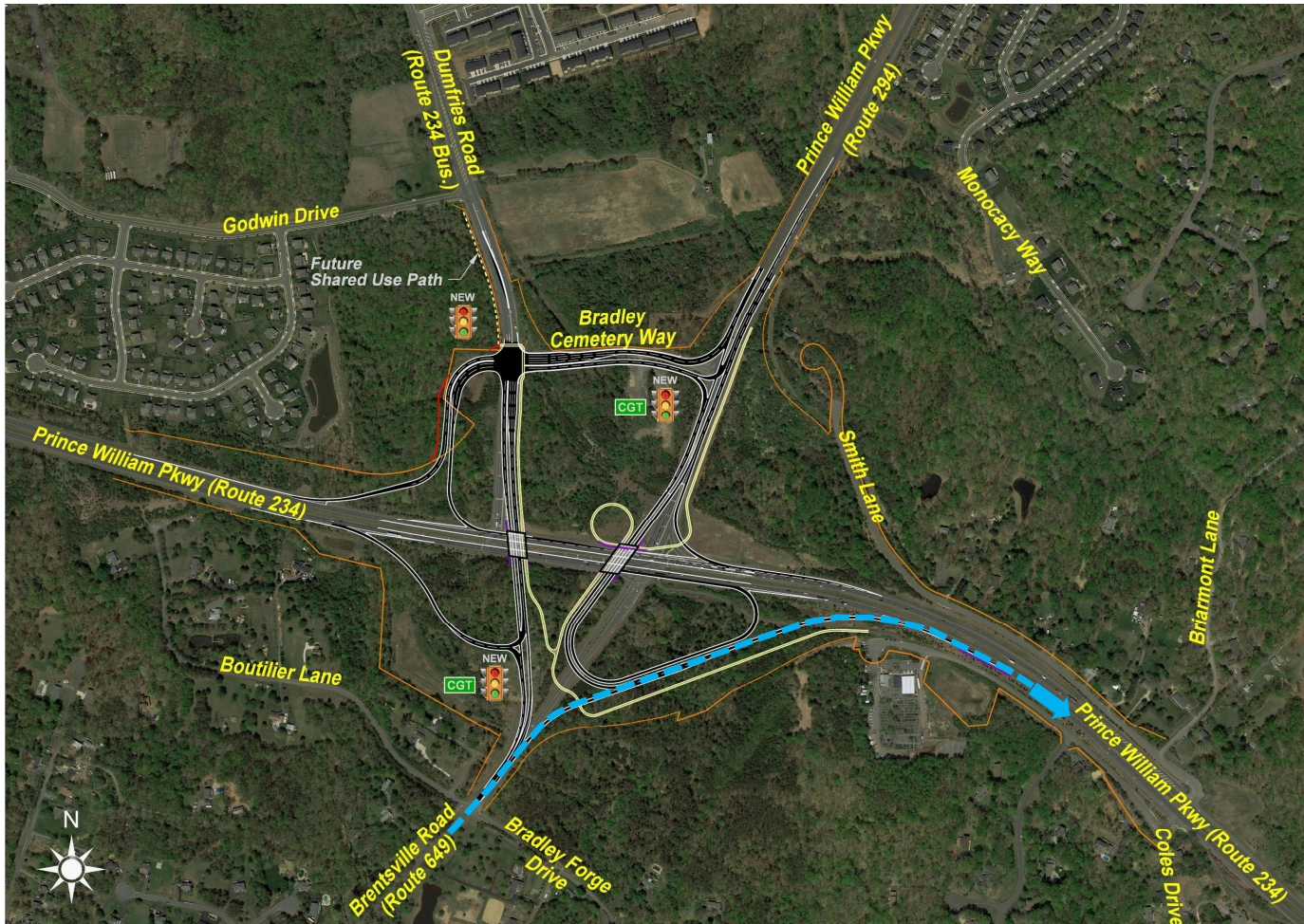
Existing Conditions



From Brentsville Road (Rte 649) Northbound to Prince William Pkwy (Rte 234) Eastbound



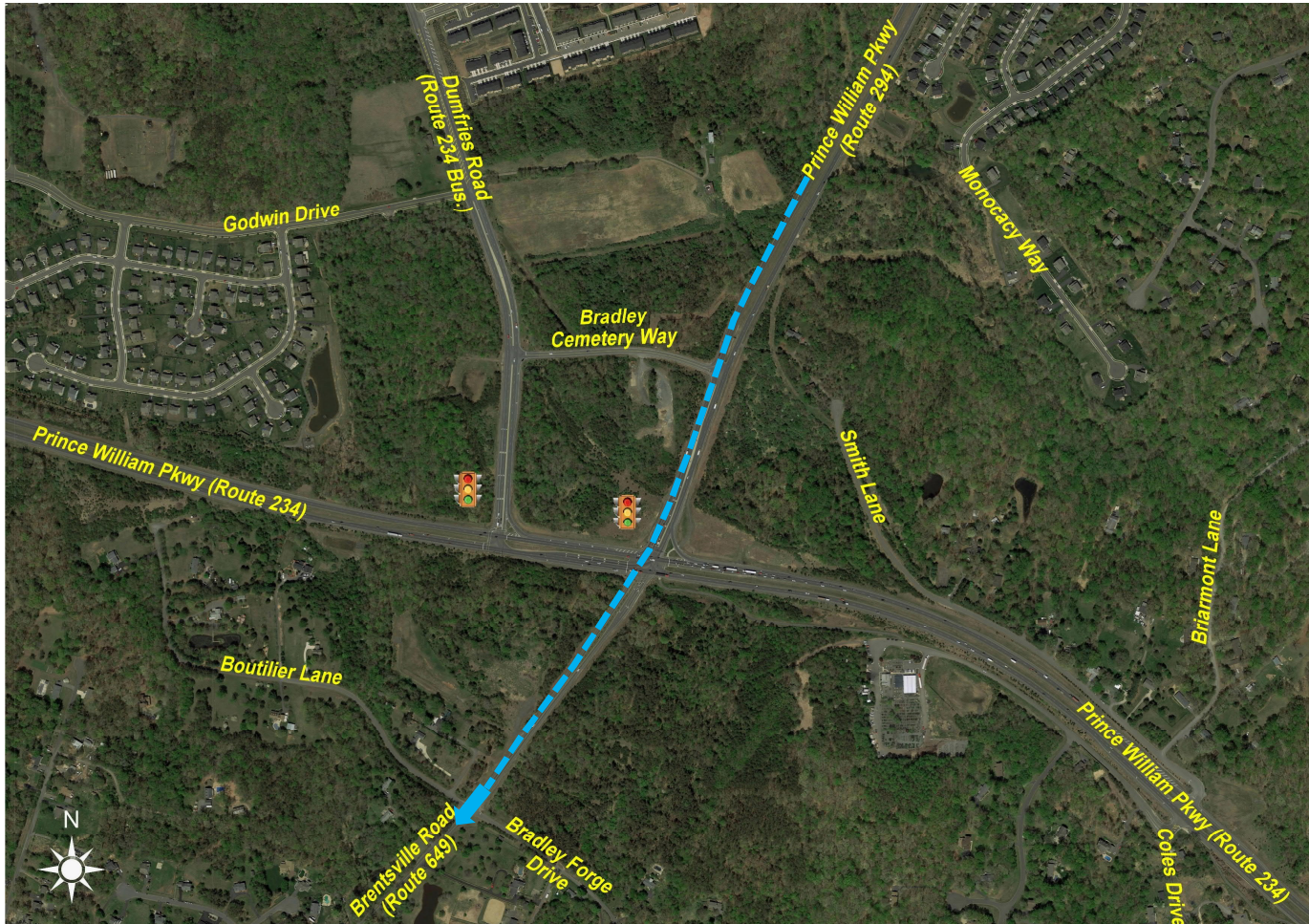
Proposed Conditions



From Brentsville Road (Rte 649) Northbound to Prince William Pkwy (Rte 234) Eastbound



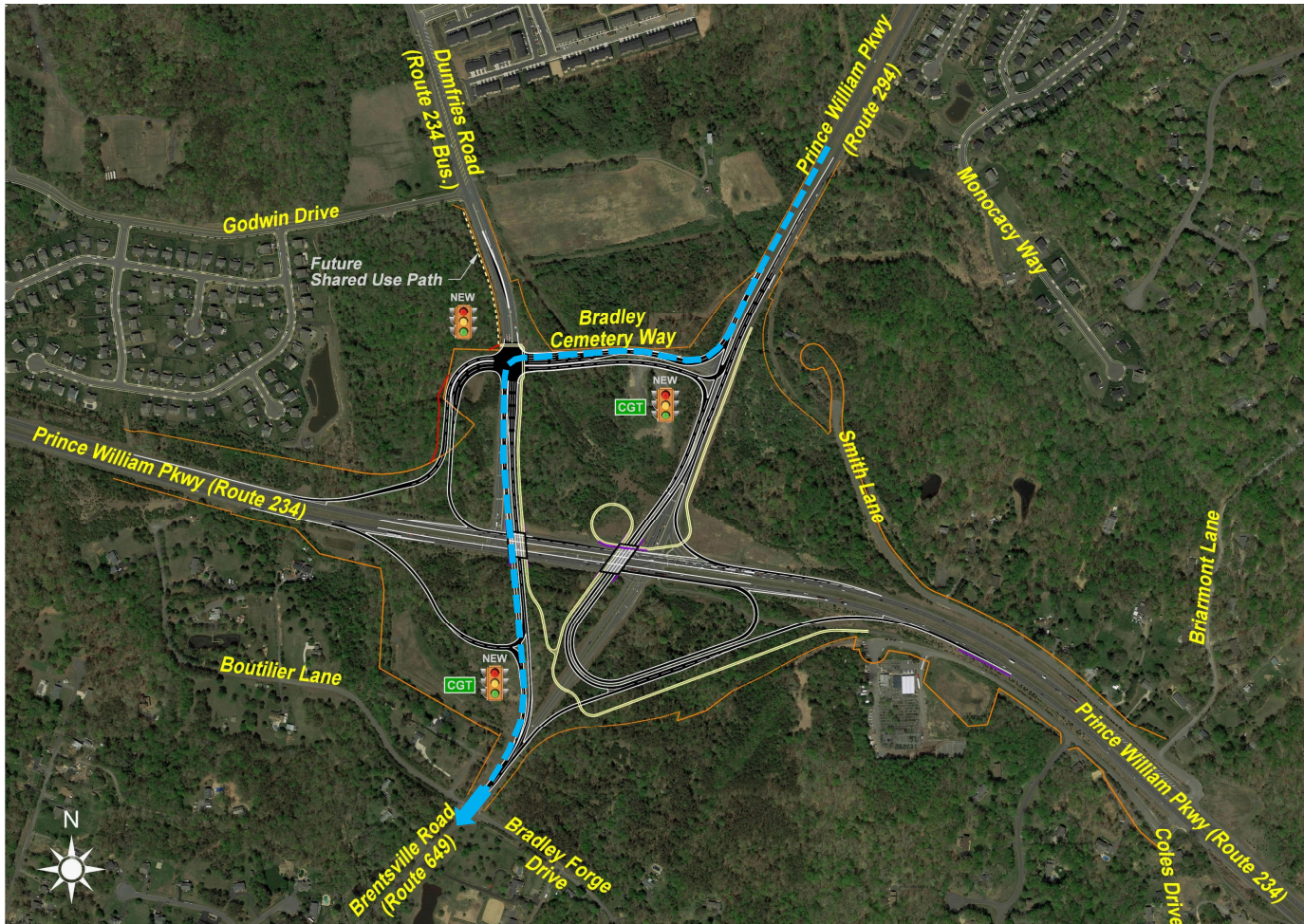
Existing Conditions



From Prince William Pkwy (Rte 294) Southbound to Brentsville Road (Rte 649) Southbound



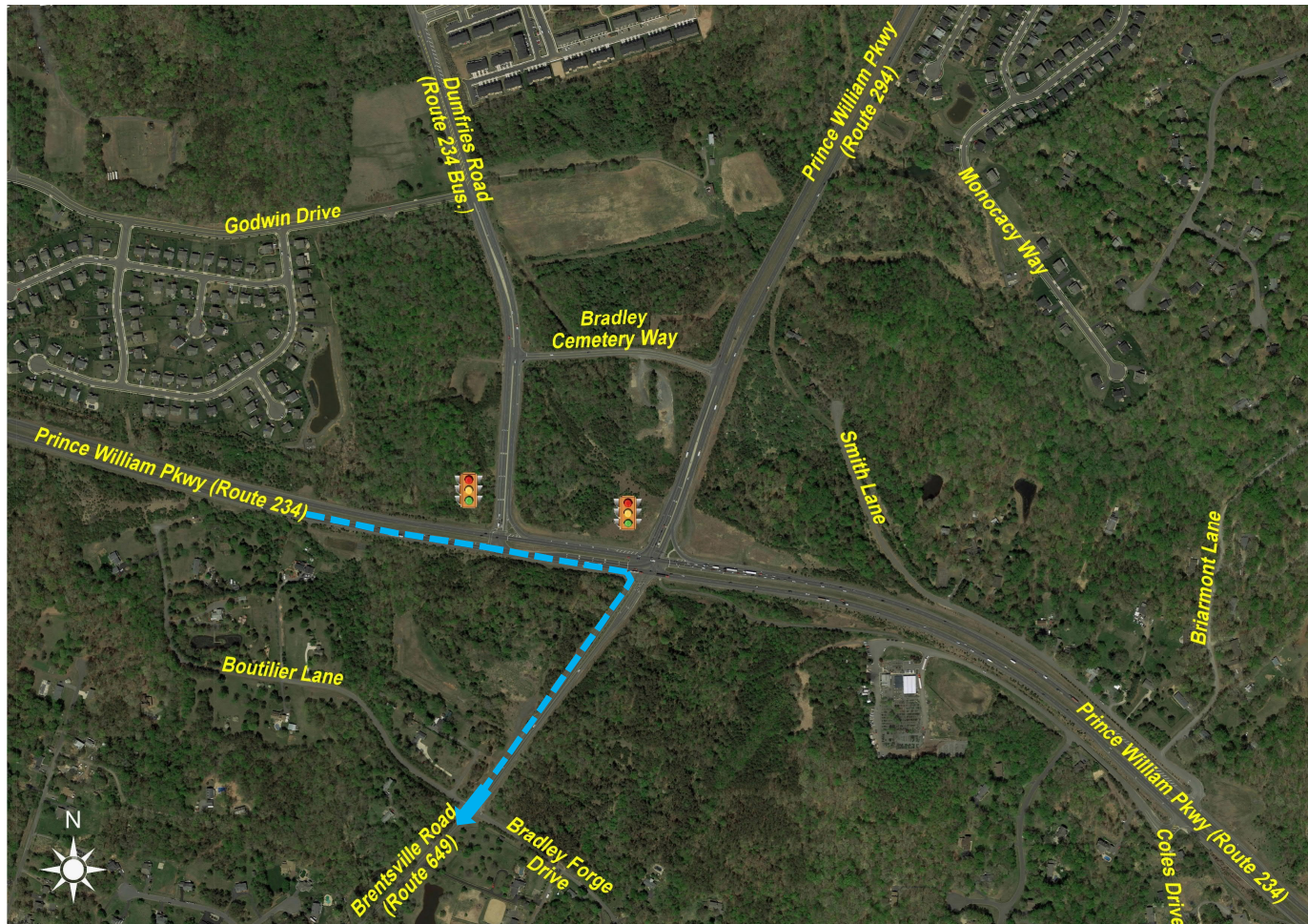
Proposed Conditions



From Prince William Pkwy (Rte 294) Southbound to Brentsville Road (Rte 649) Southbound



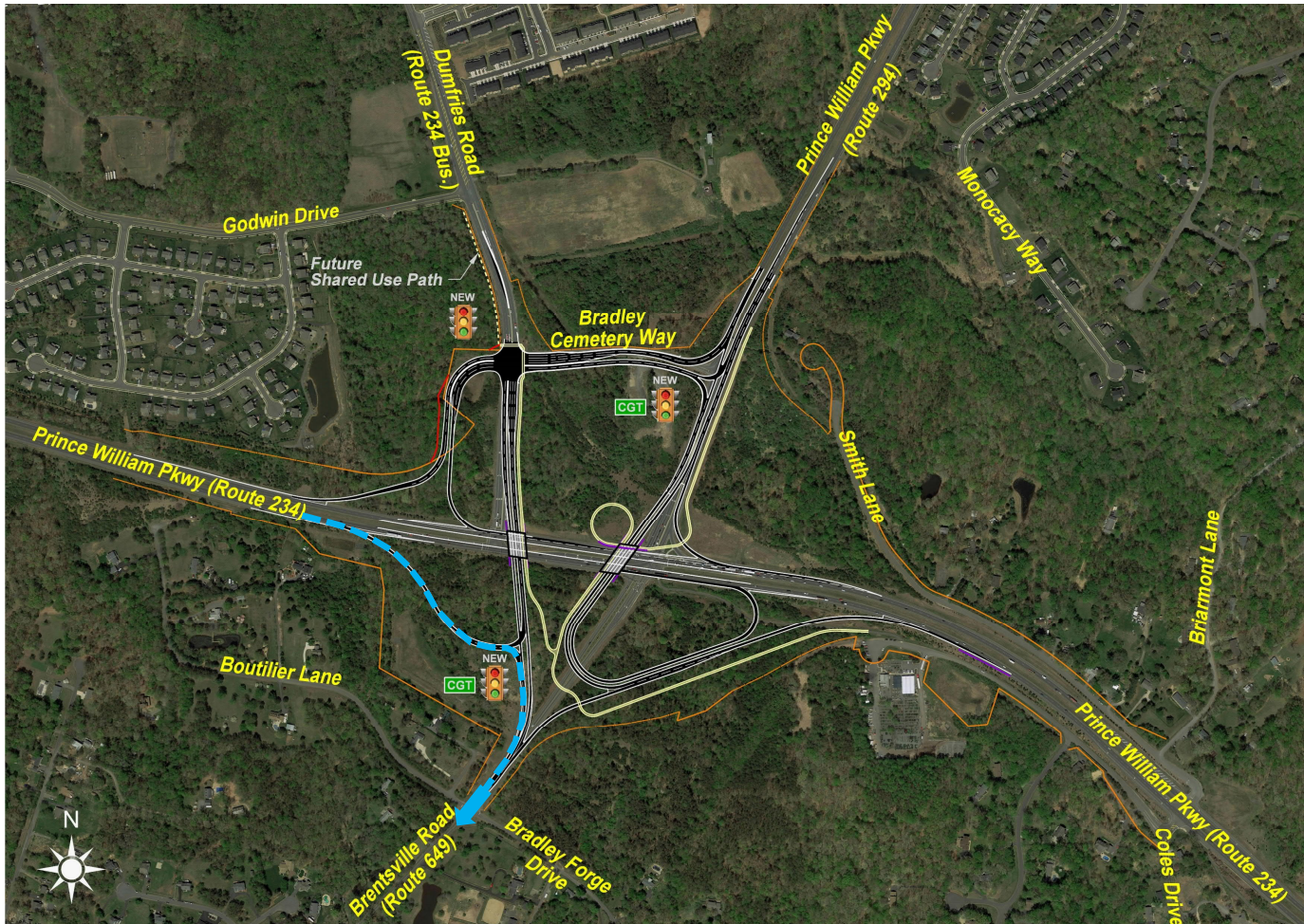
Existing Conditions



From Prince William Pkwy (Rte 234) Eastbound to Brentsville Road (Rte 649) Southbound



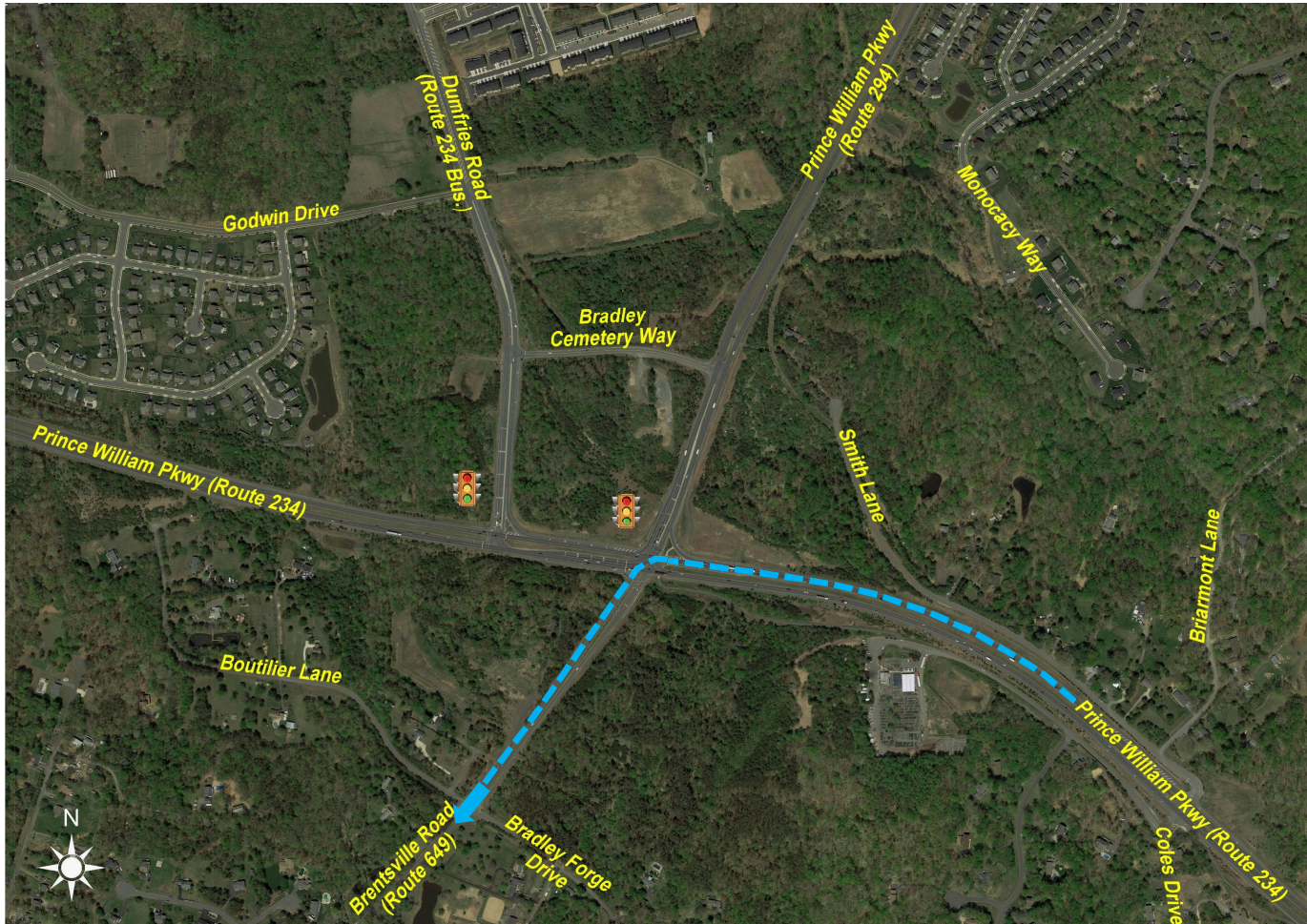
Proposed Conditions



From Prince William Pkwy (Rte 234) Eastbound to Brentsville Road (Rte 649) Southbound



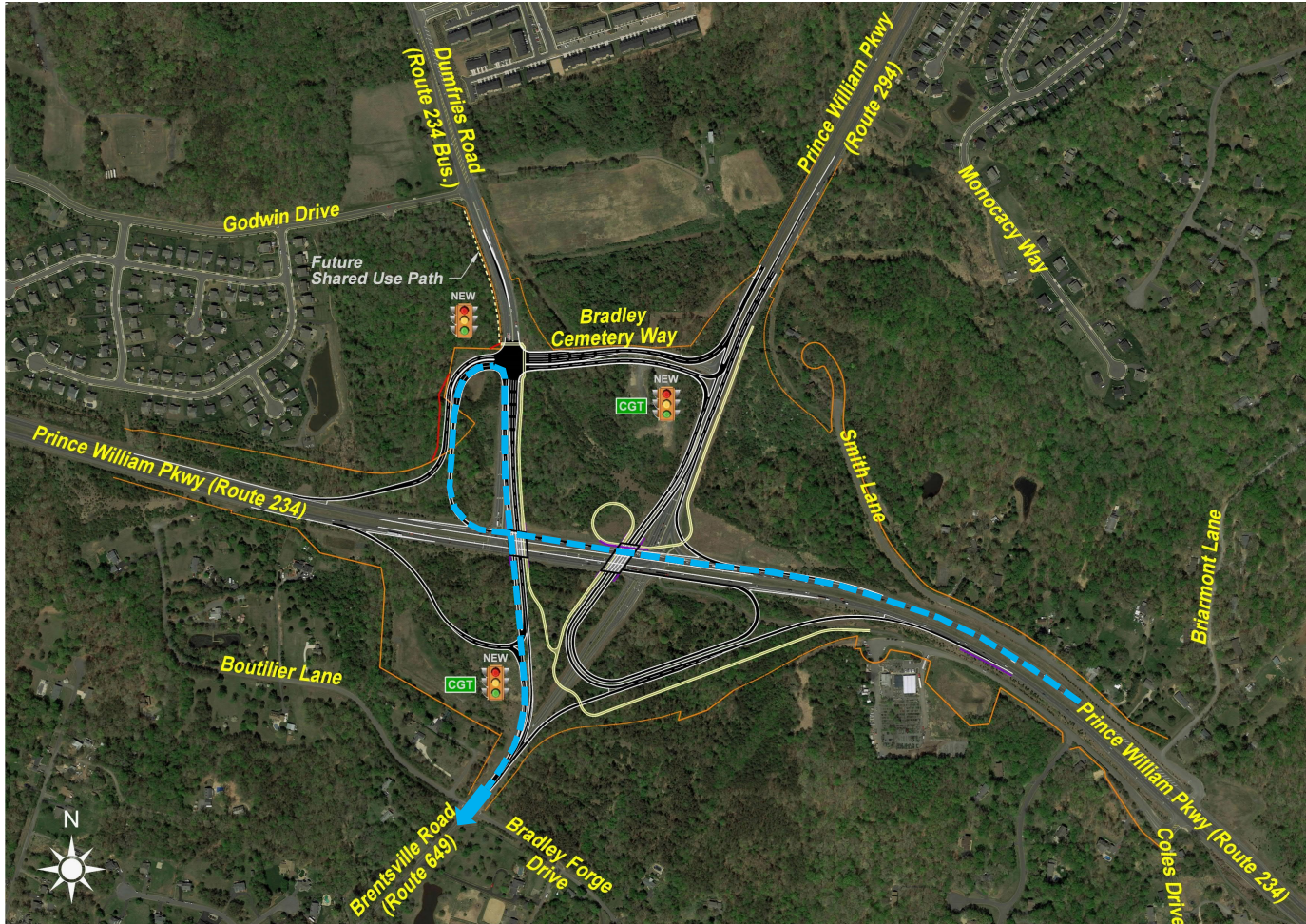
Existing Conditions



From Prince William Pkwy (Rte 234) Westbound to Brentsville Road (Rte 649) Southbound



Proposed Conditions



From Prince William Pkwy (Rte 234) Westbound to Brentsville Road (Rte 649) Southbound

