

**Quantico Creek
Watershed Assessment**

RSAT - Channel Stability
Basin 645

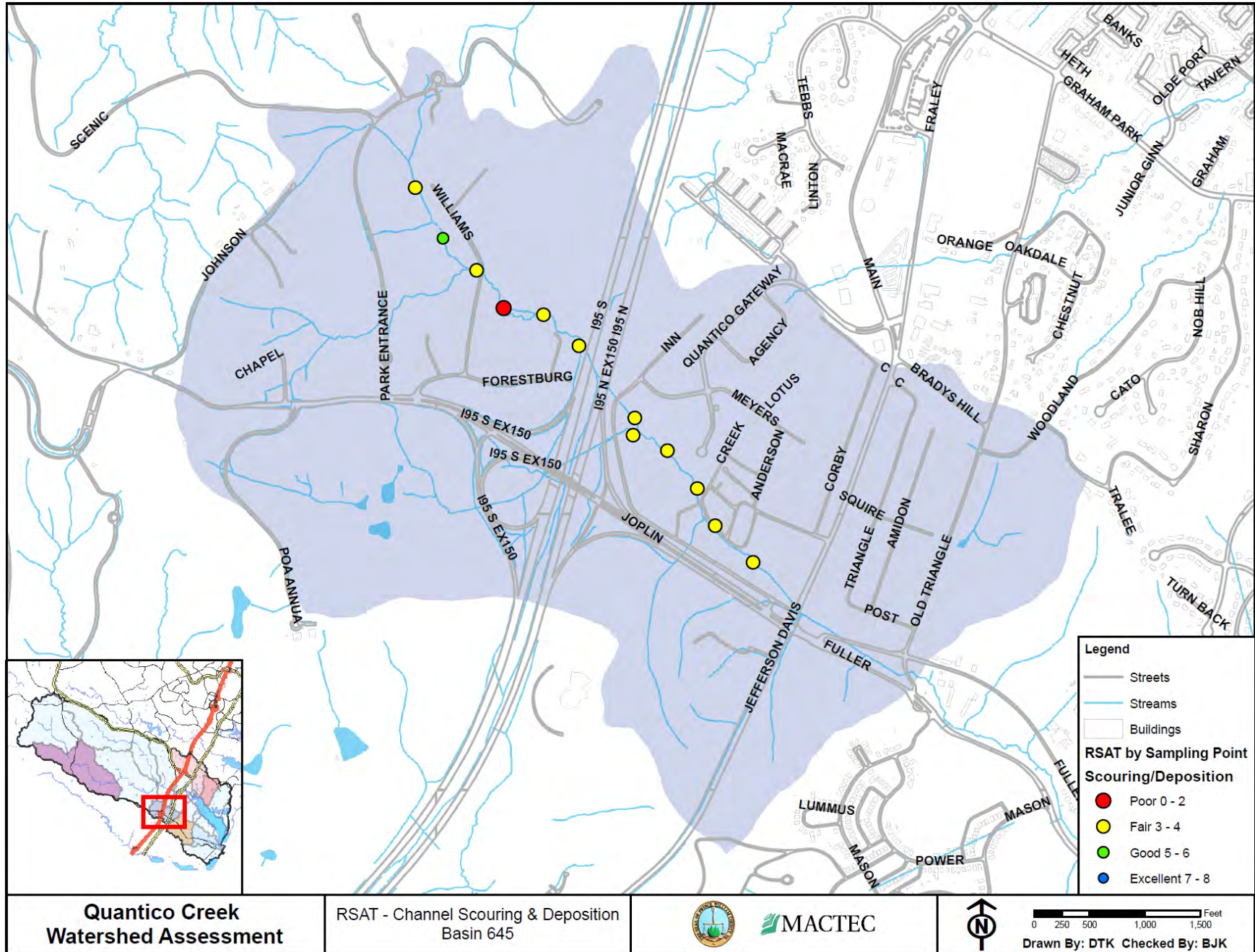


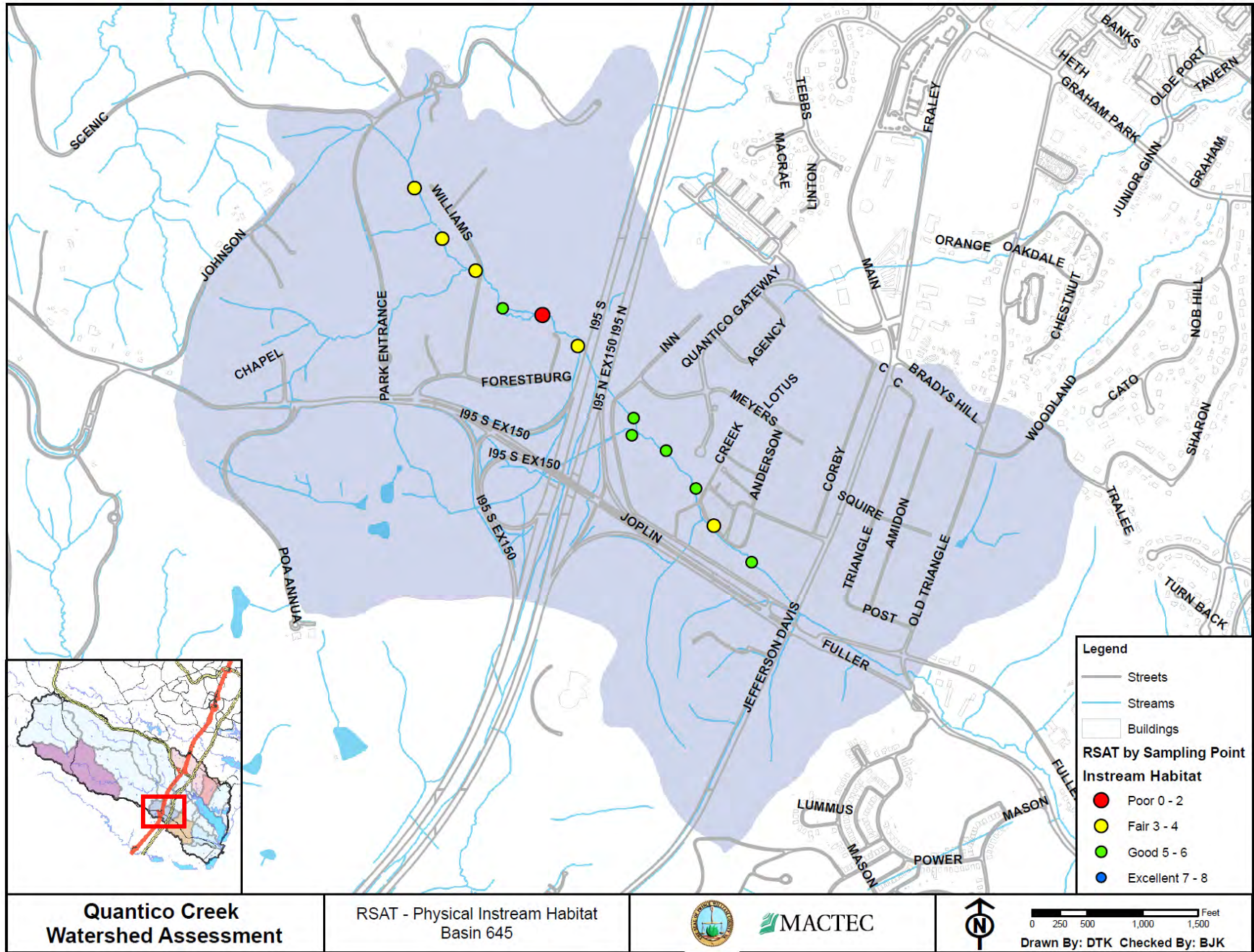
MACTEC

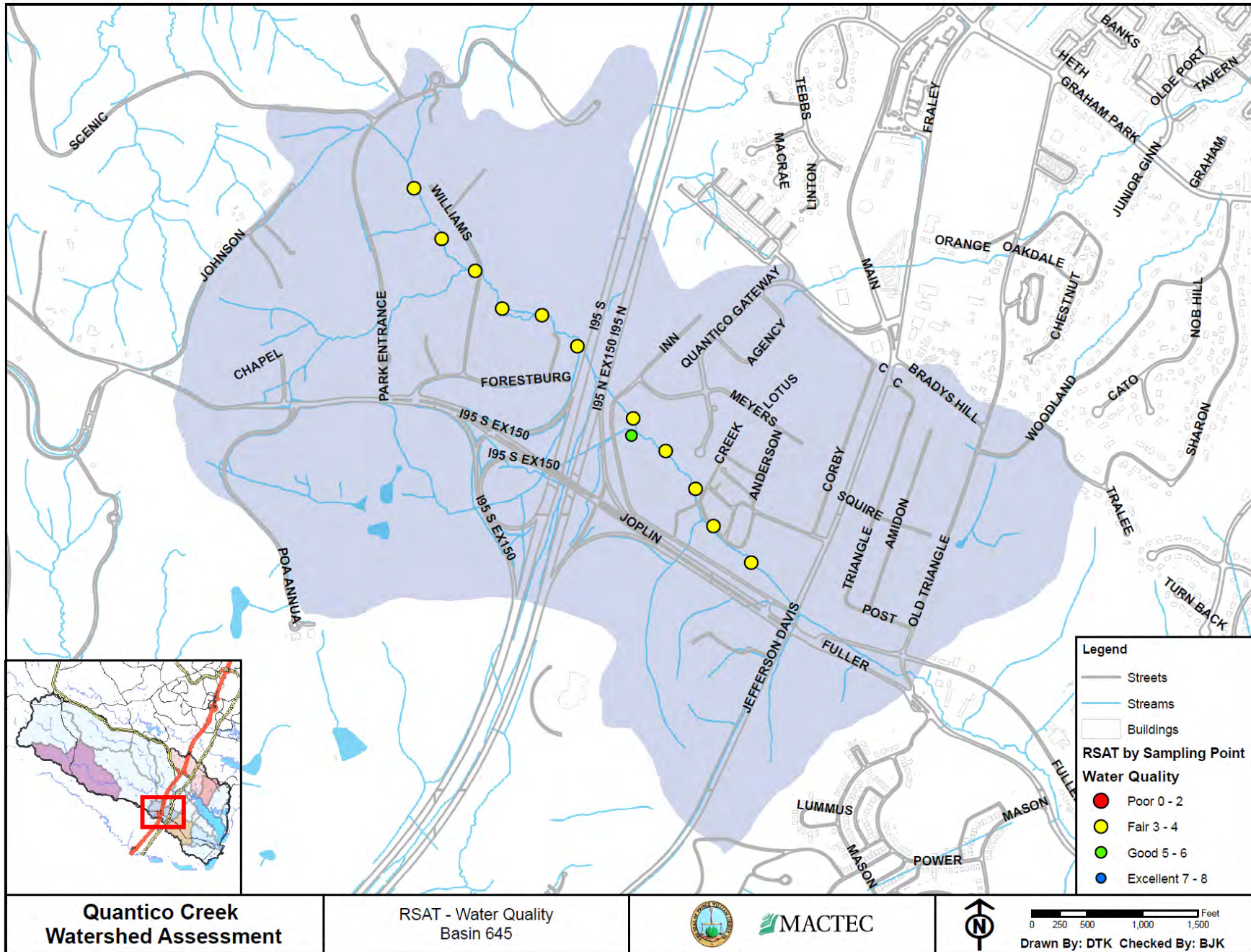


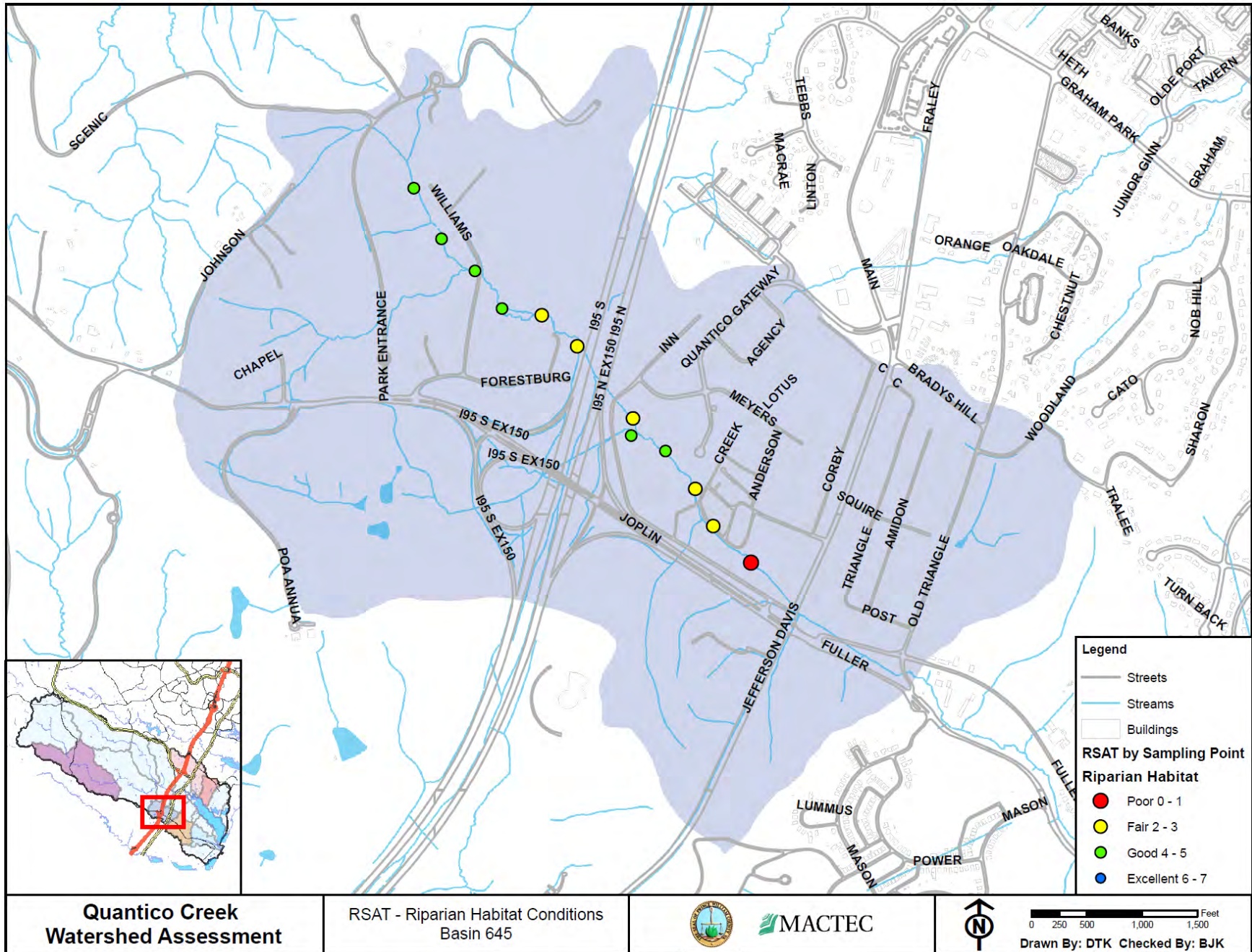
0 250 500 1,000 1,500 Feet

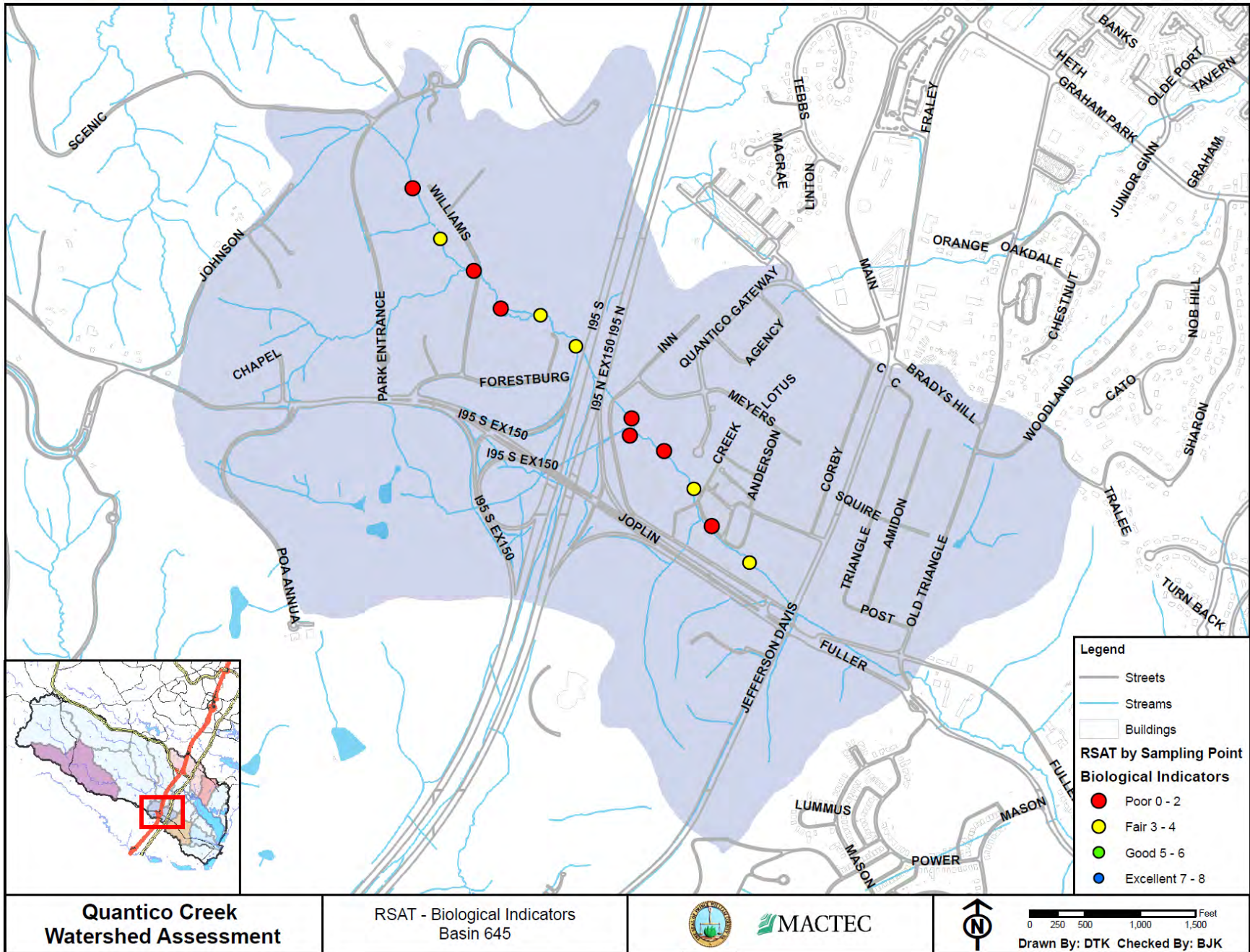
Drawn By: DTK Checked By: BJK

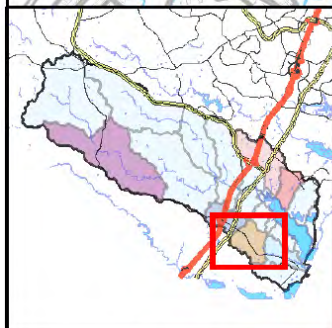
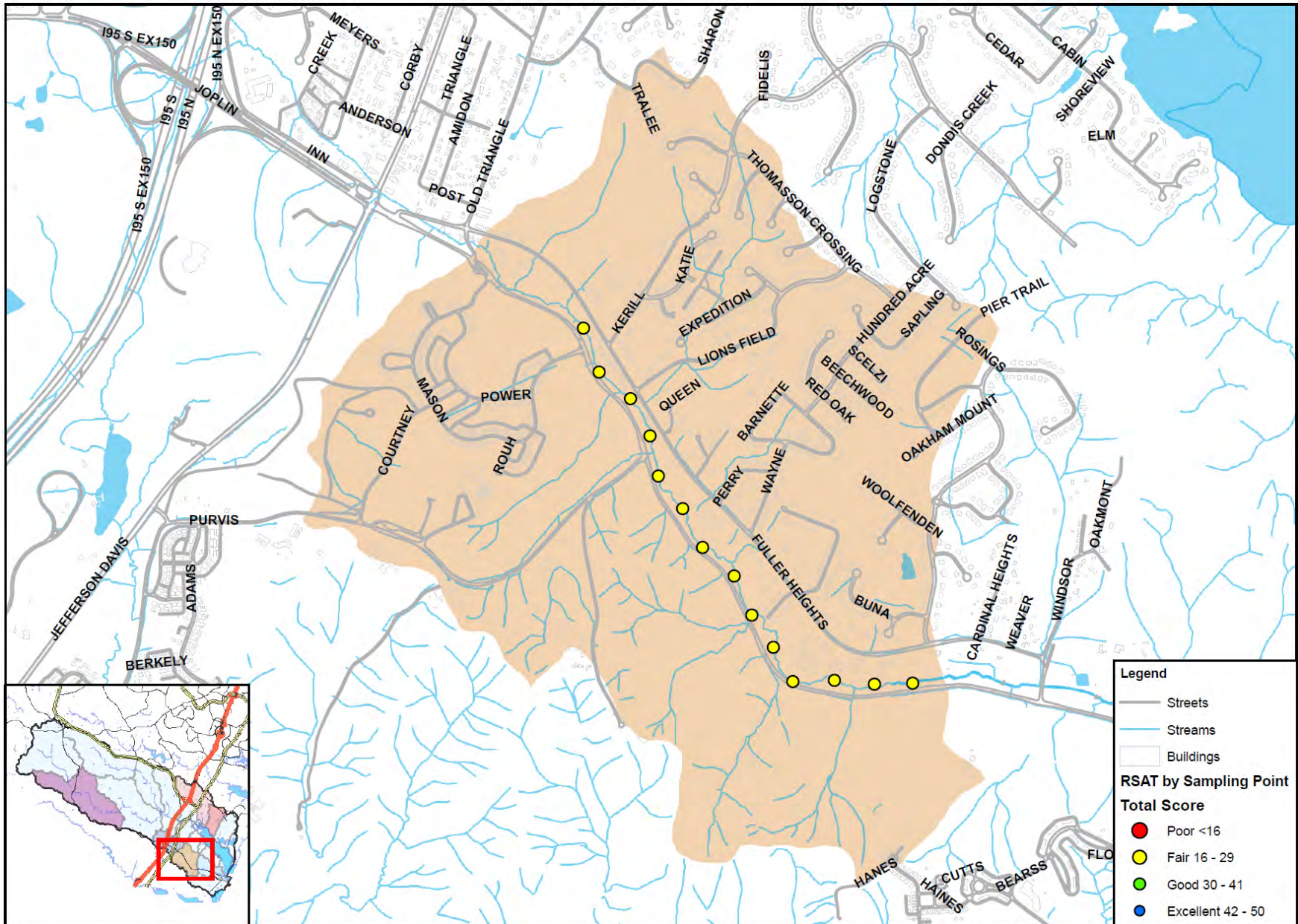












Quantico Creek Watershed Assessment

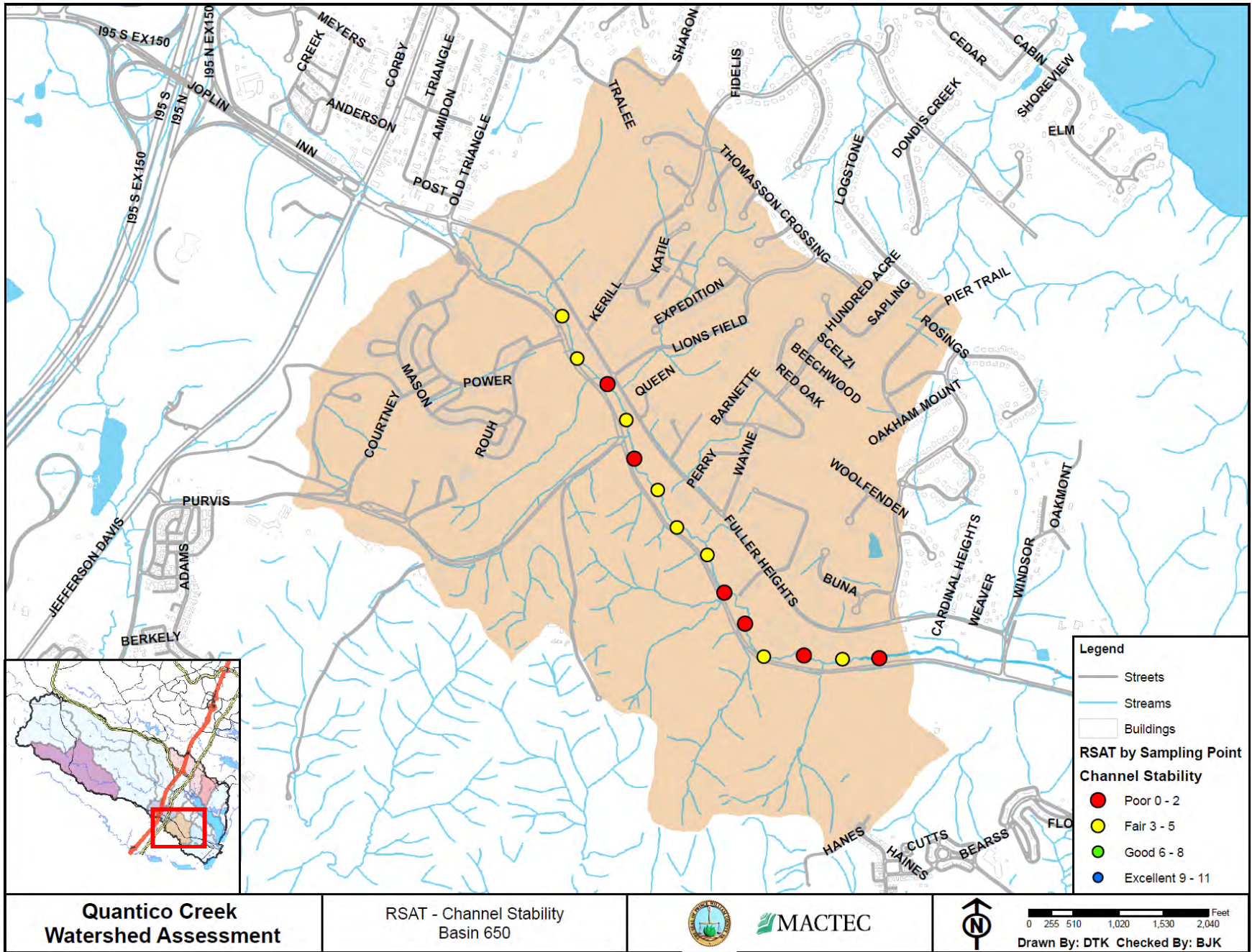
RSAT - Total Score by Sampling Point
Basin 650

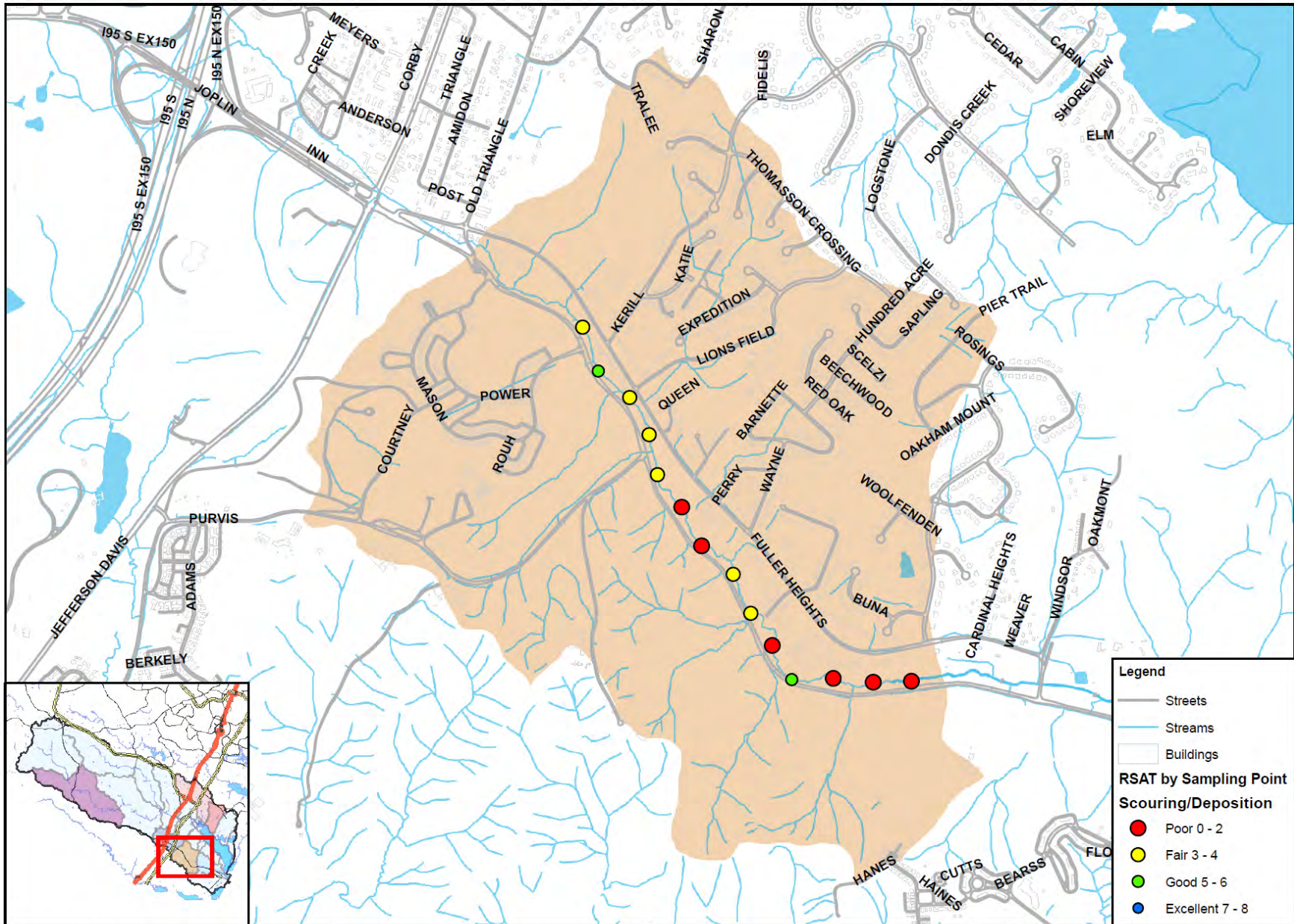


MACTEC



0 250 500 1,000 1,500 2,000 Feet
Drawn By: DTK Checked By: BJK





Quantico Creek Watershed Assessment

RSAT - Channel Scouring & Deposition Basin 650

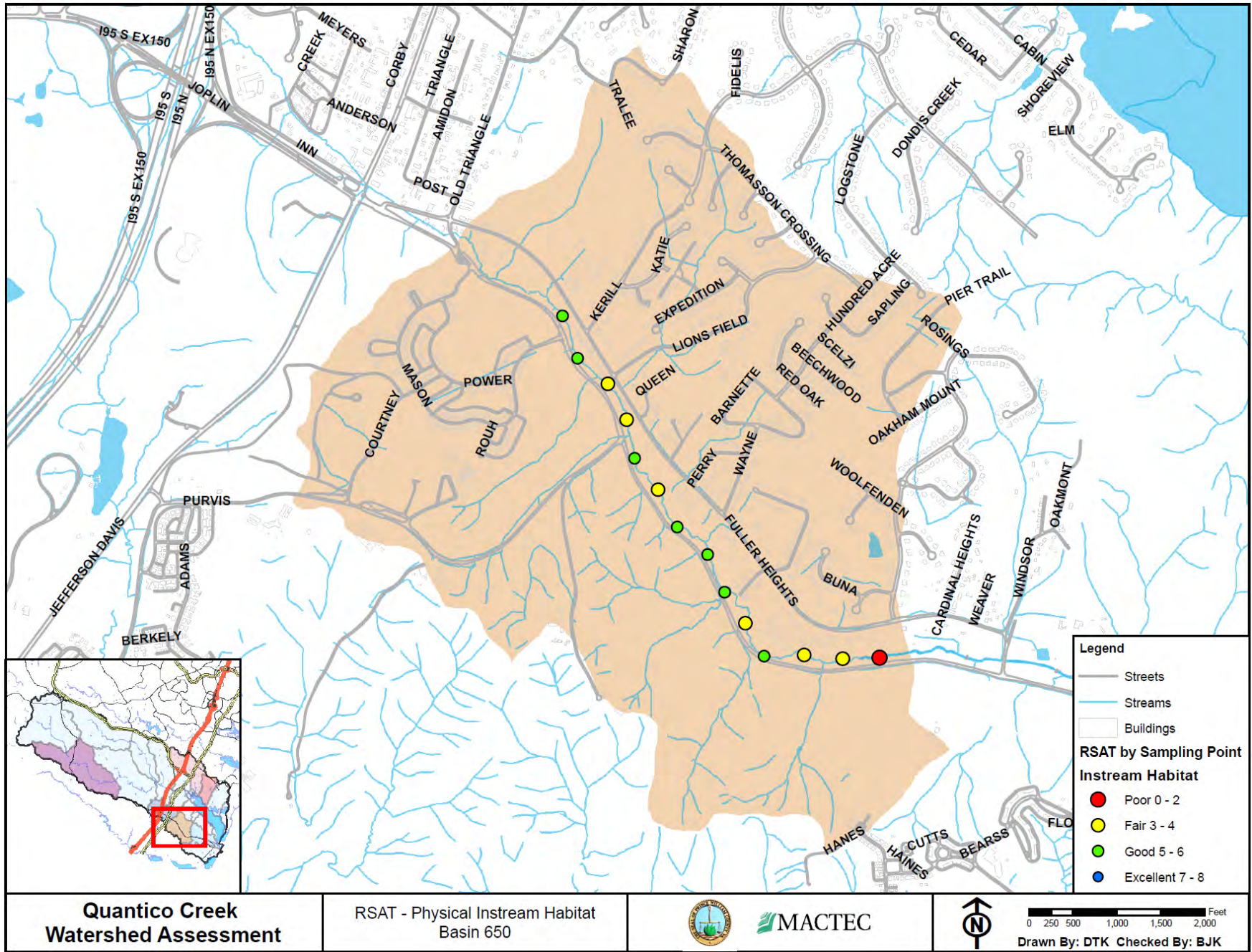


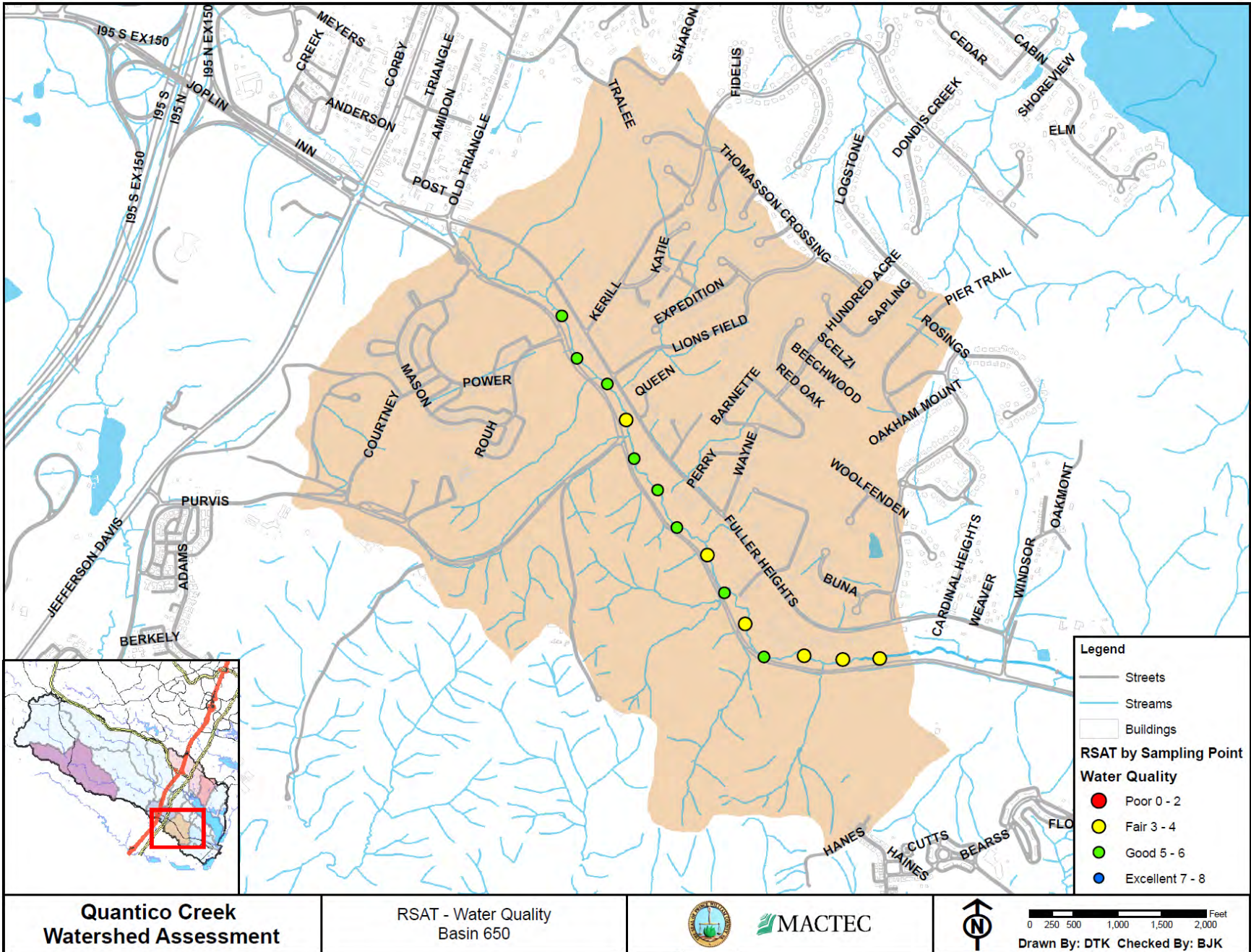
MACTEC

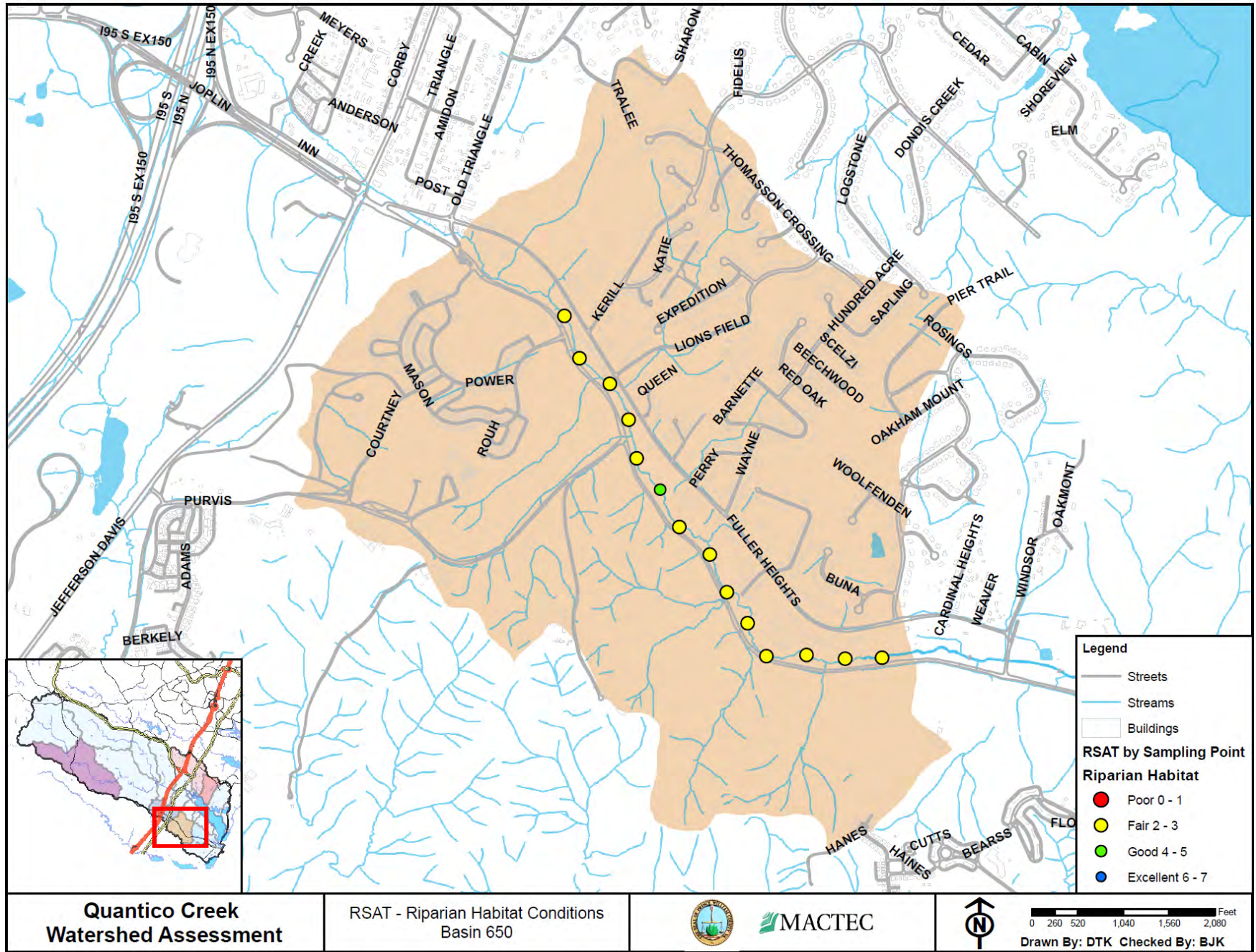


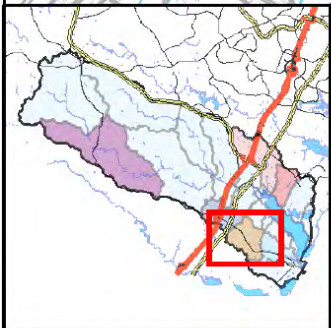
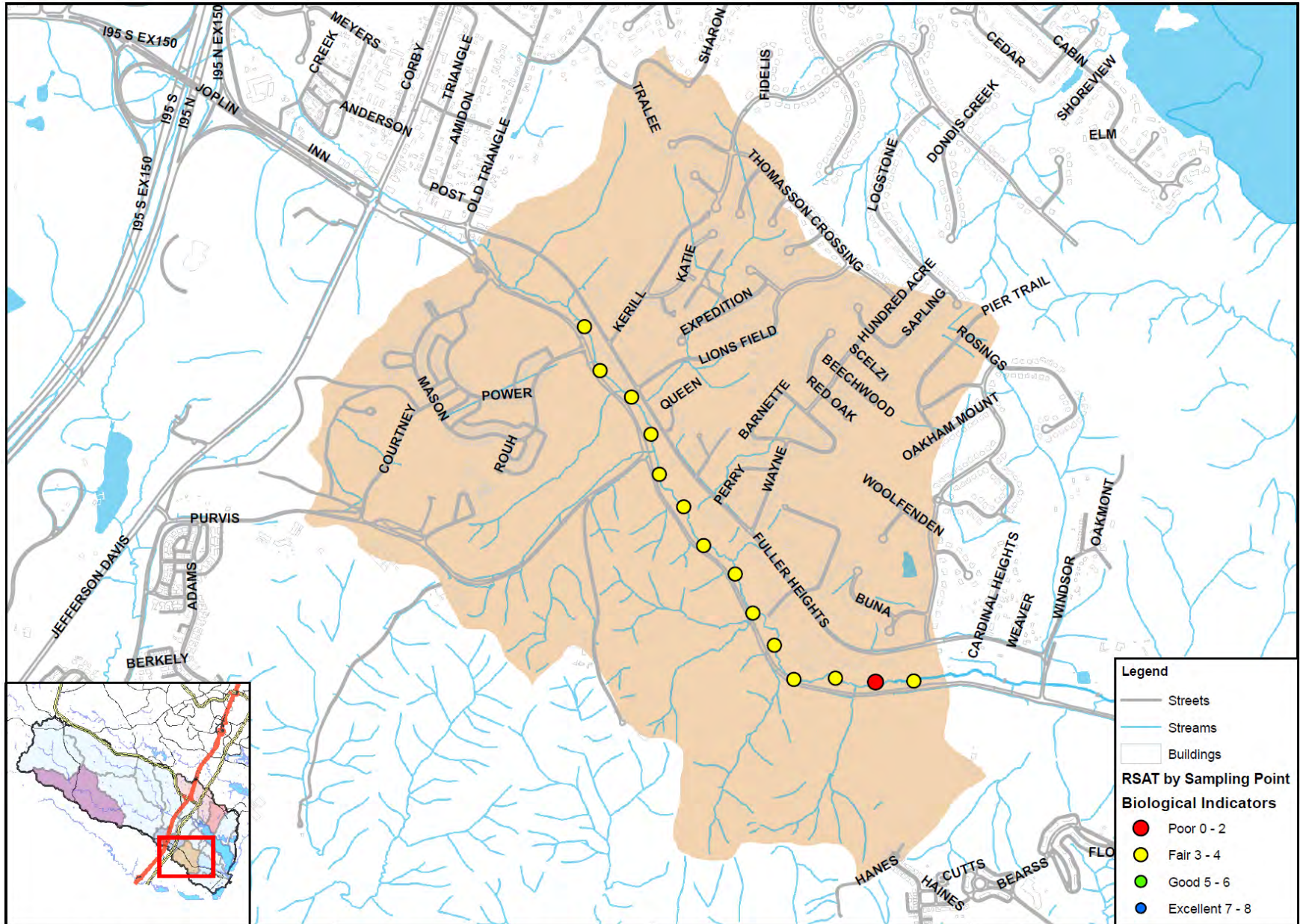
0 250 500 1,000 1,500 2,000 Feet

Drawn By: DTK Checked By: BJK









**Quantico Creek
Watershed Assessment**

RSAT - Biological Indicators
Basin 650

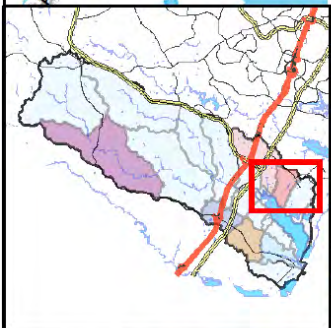
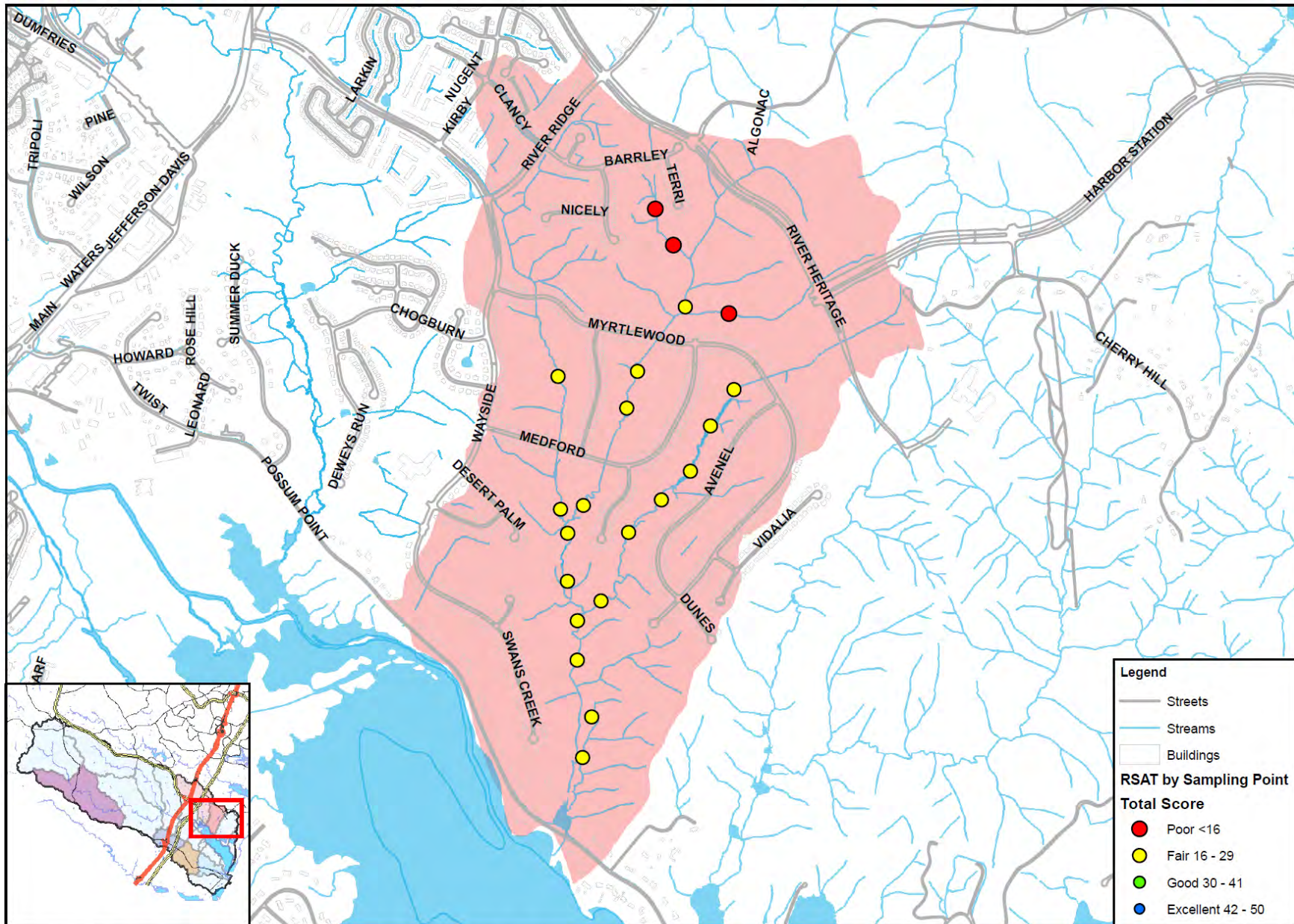


MACTEC



0 255 510 1,020 1,530 2,040
Feet

Drawn By: DTK Checked By: BJK

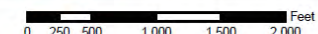


**Quantico Creek
Watershed Assessment**

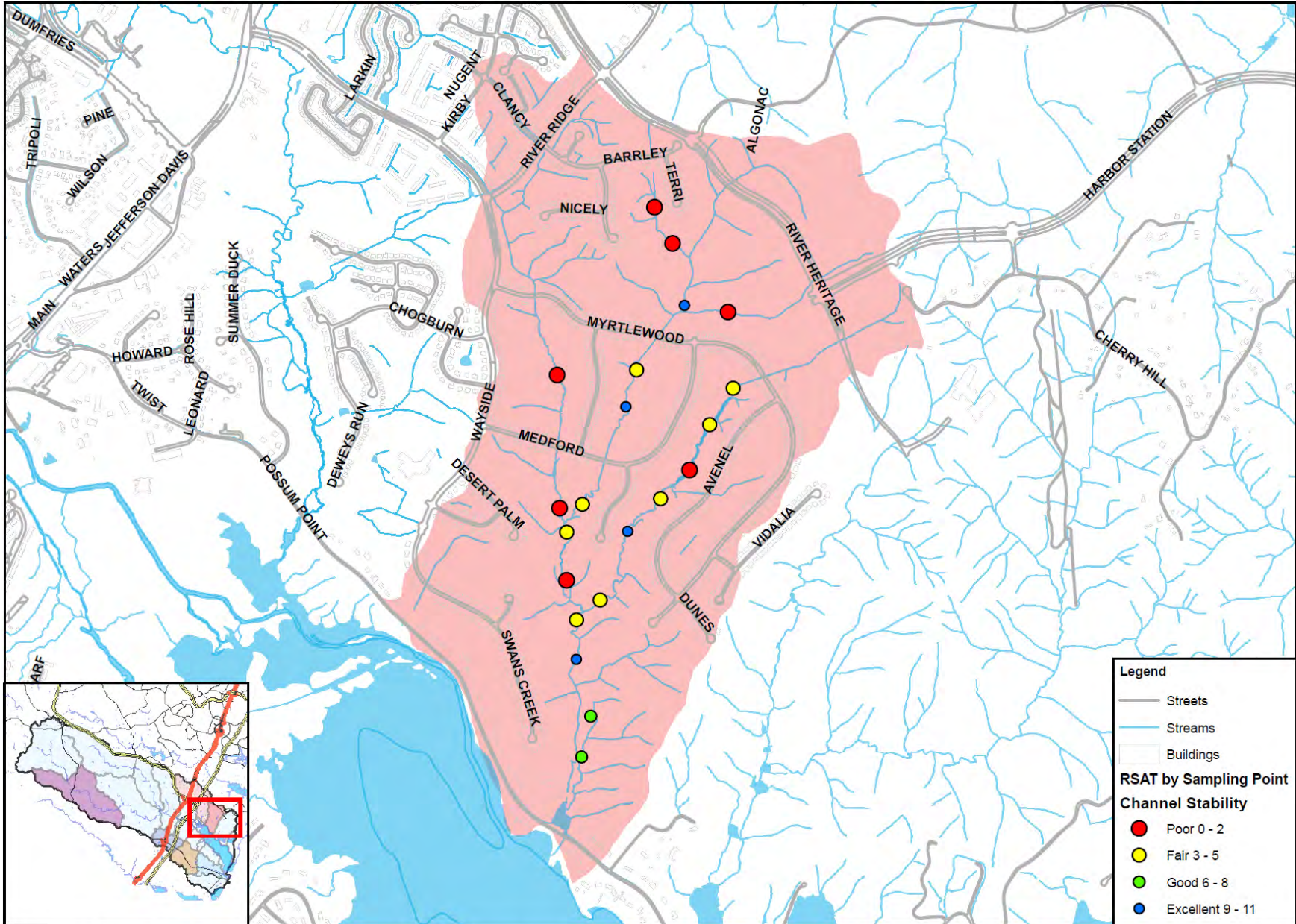
RSAT - Total Score by Sampling Point
Basin 665



MACTEC



Drawn By: DTK Checked By: BJK

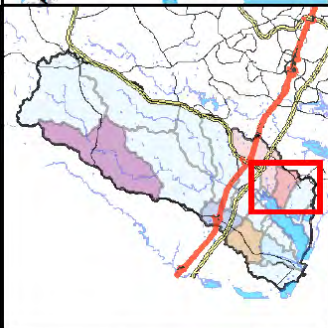
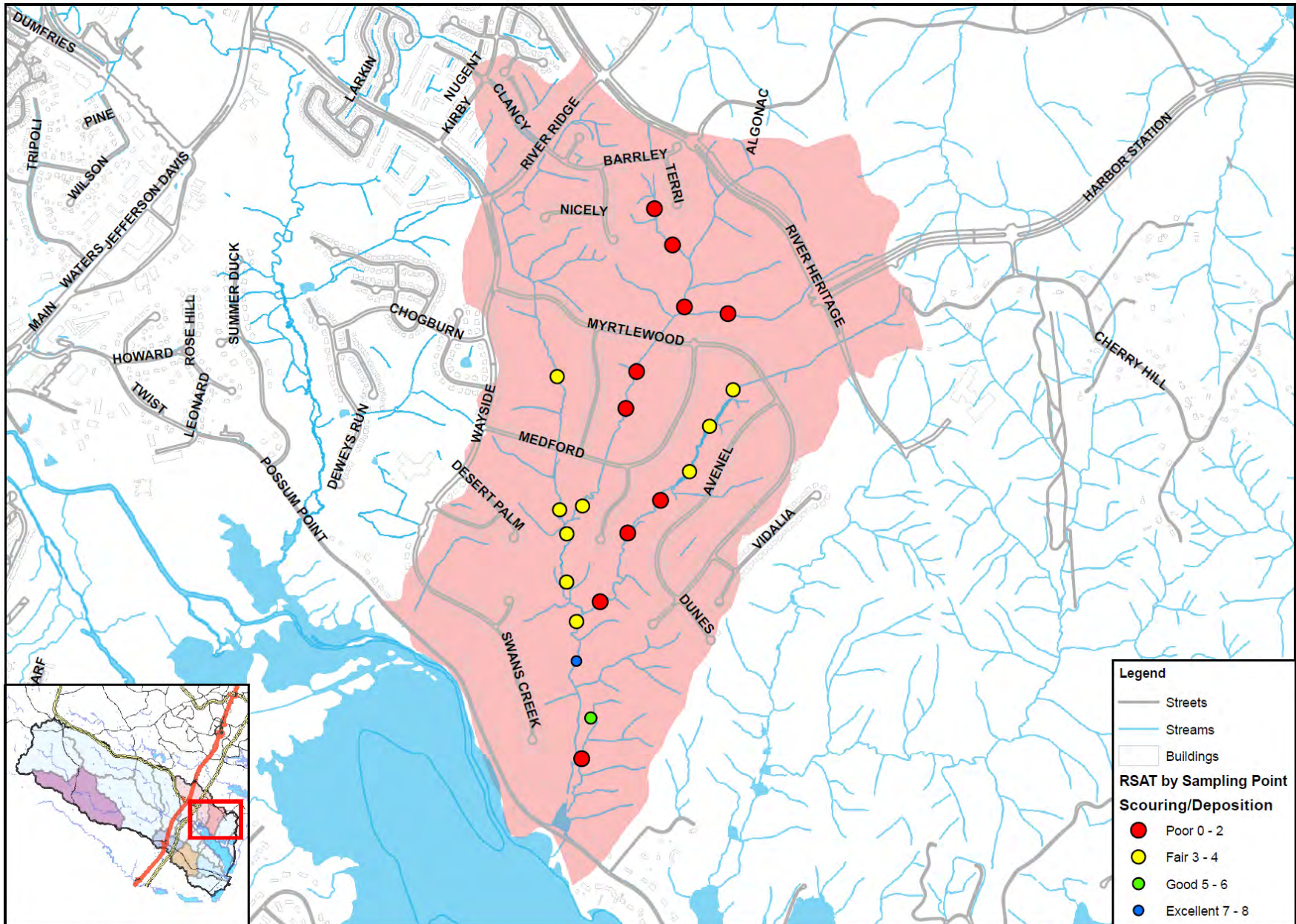


**Quantico Creek
Watershed Assessment**

RSAT - Channel Stability
Basin 665



0 250 500 1,000 1,500 2,000 Feet
 Drawn By: DTK Checked By: BJK

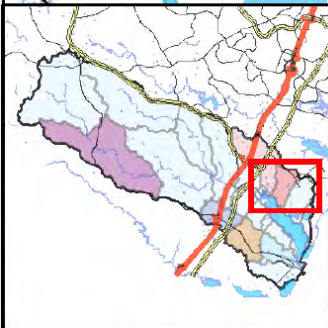
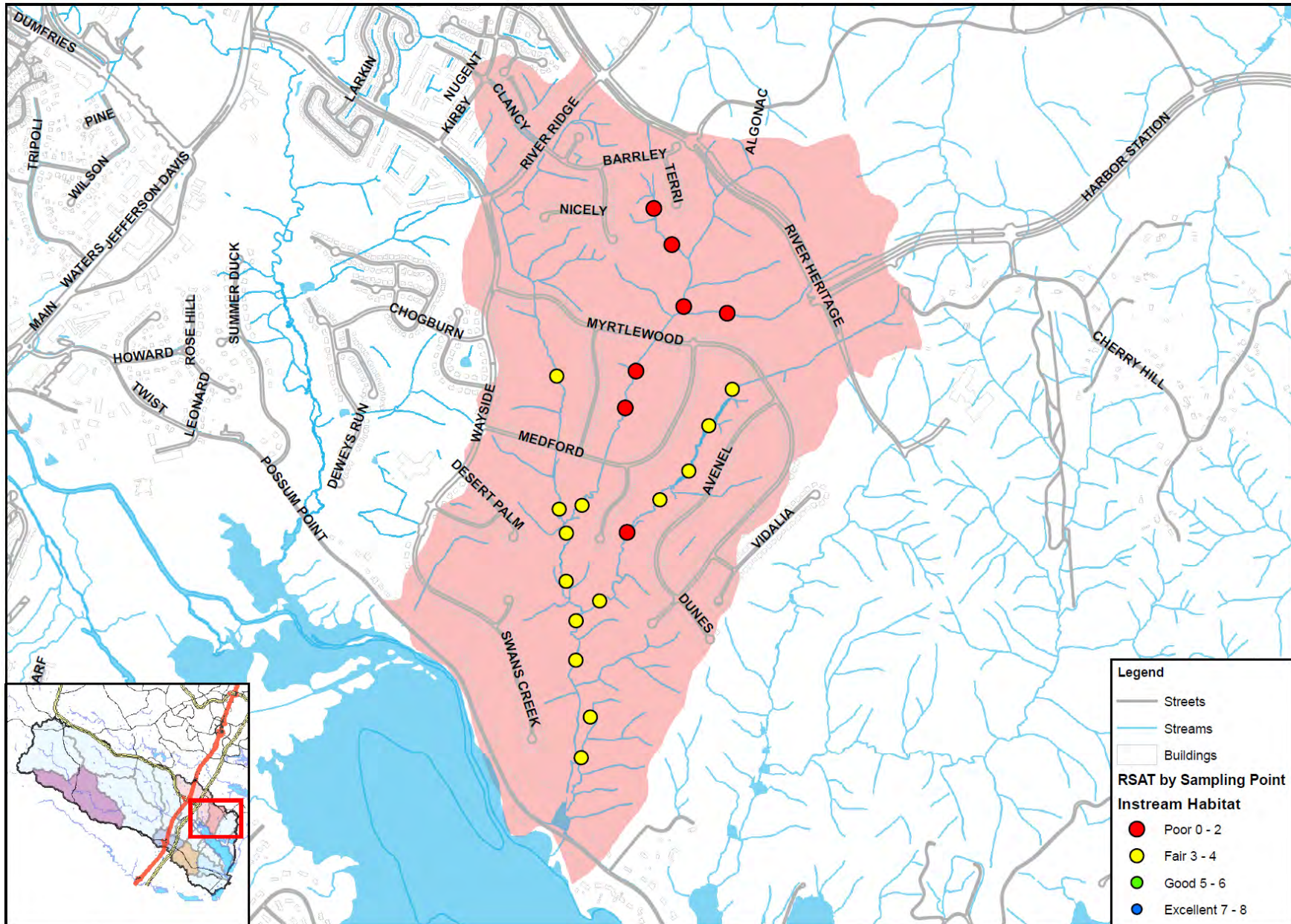


Quantico Creek Watershed Assessment

RSAT - Channel Scouring & Deposition Basin 665



North arrow and scale bar (0 to 2,040 Feet).
 Drawn By: DTK Checked By: BJK



**Quantico Creek
Watershed Assessment**

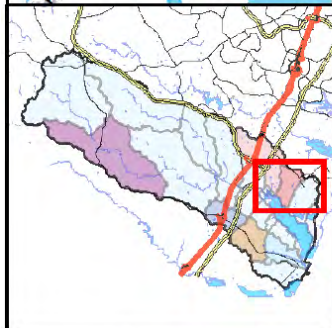
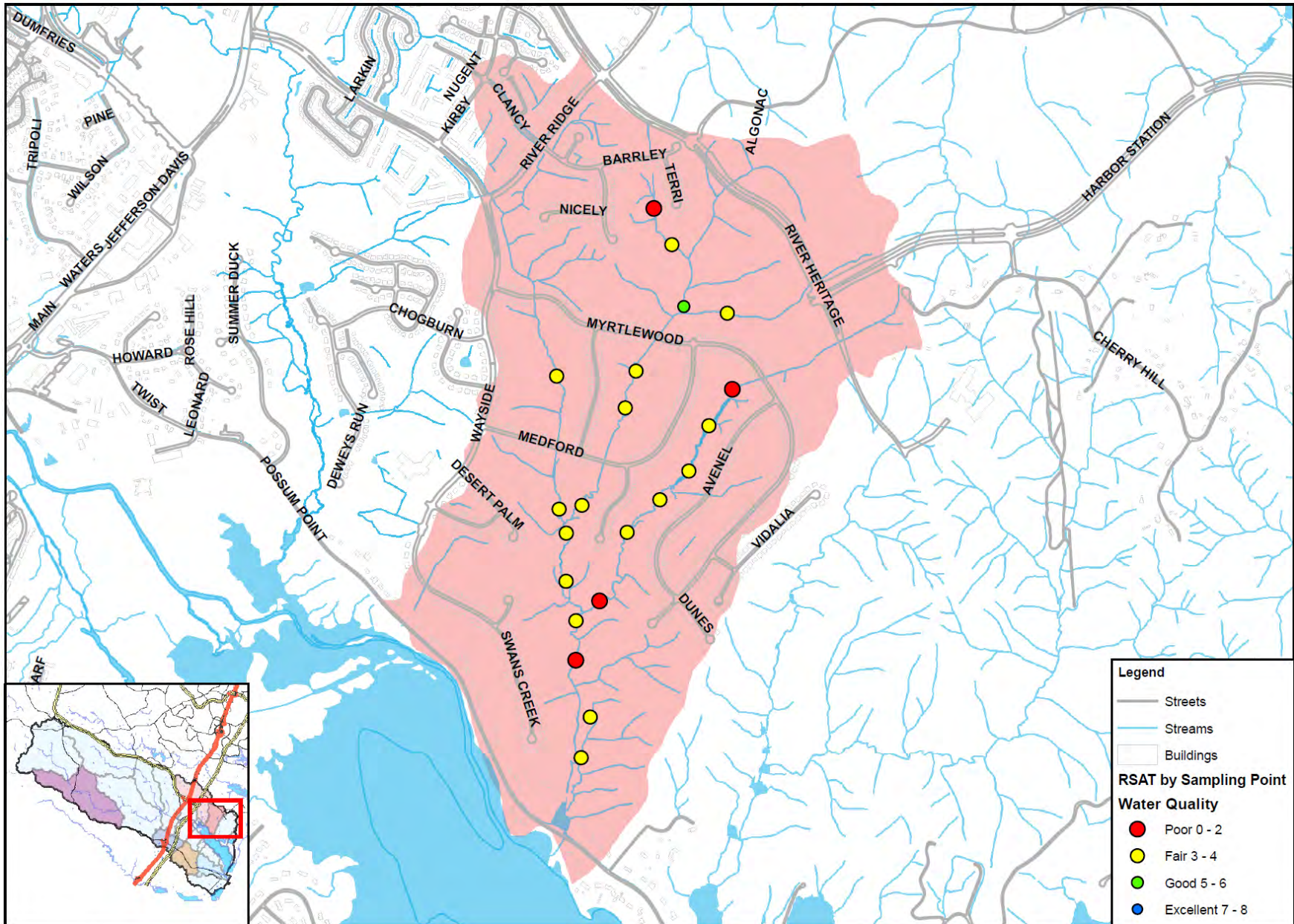
RSAT - Physical Instream Habitat
Basin 665



MACTEC



0 255 510 1,020 1,530 2,040 Feet
Drawn By: DTK Checked By: BJK

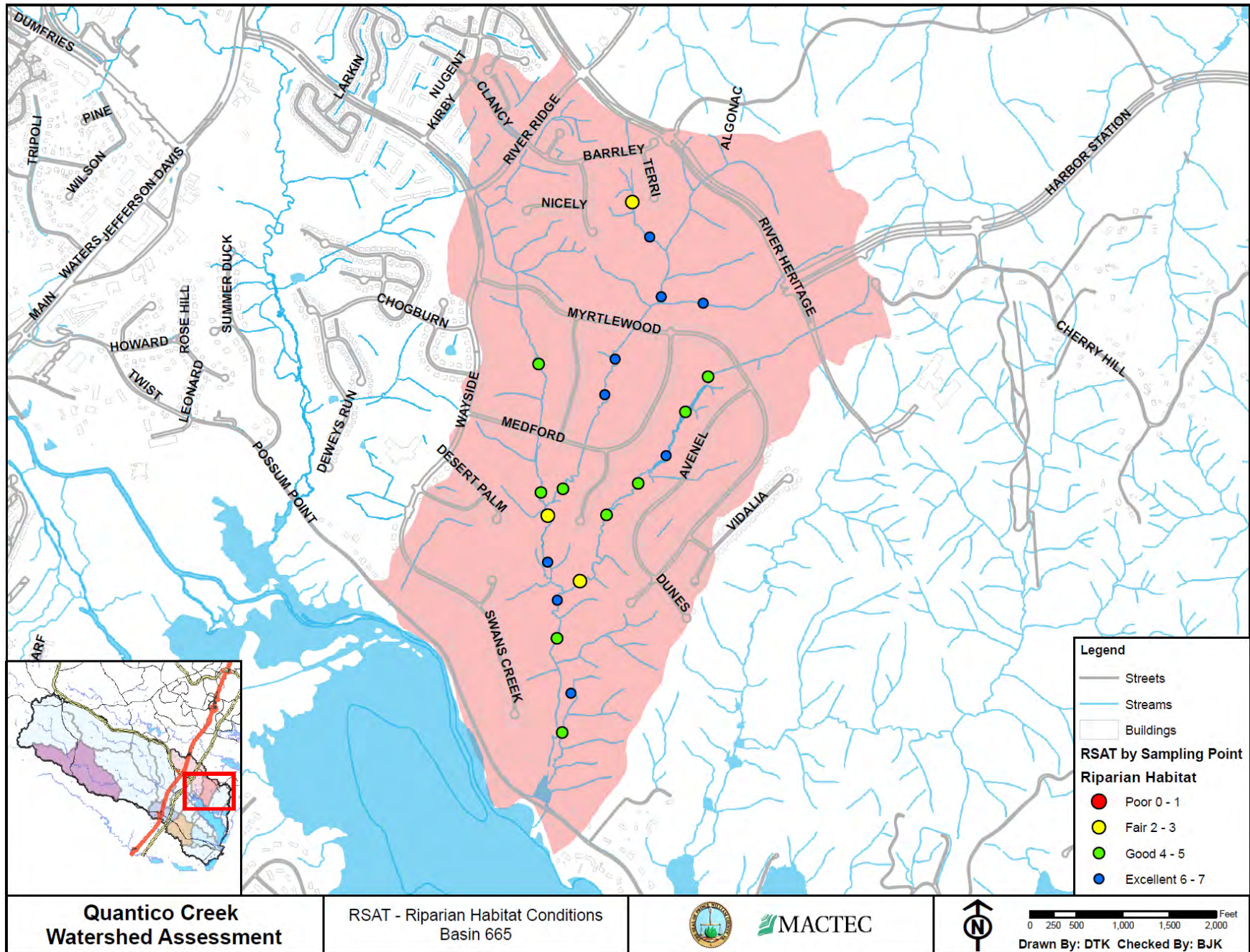


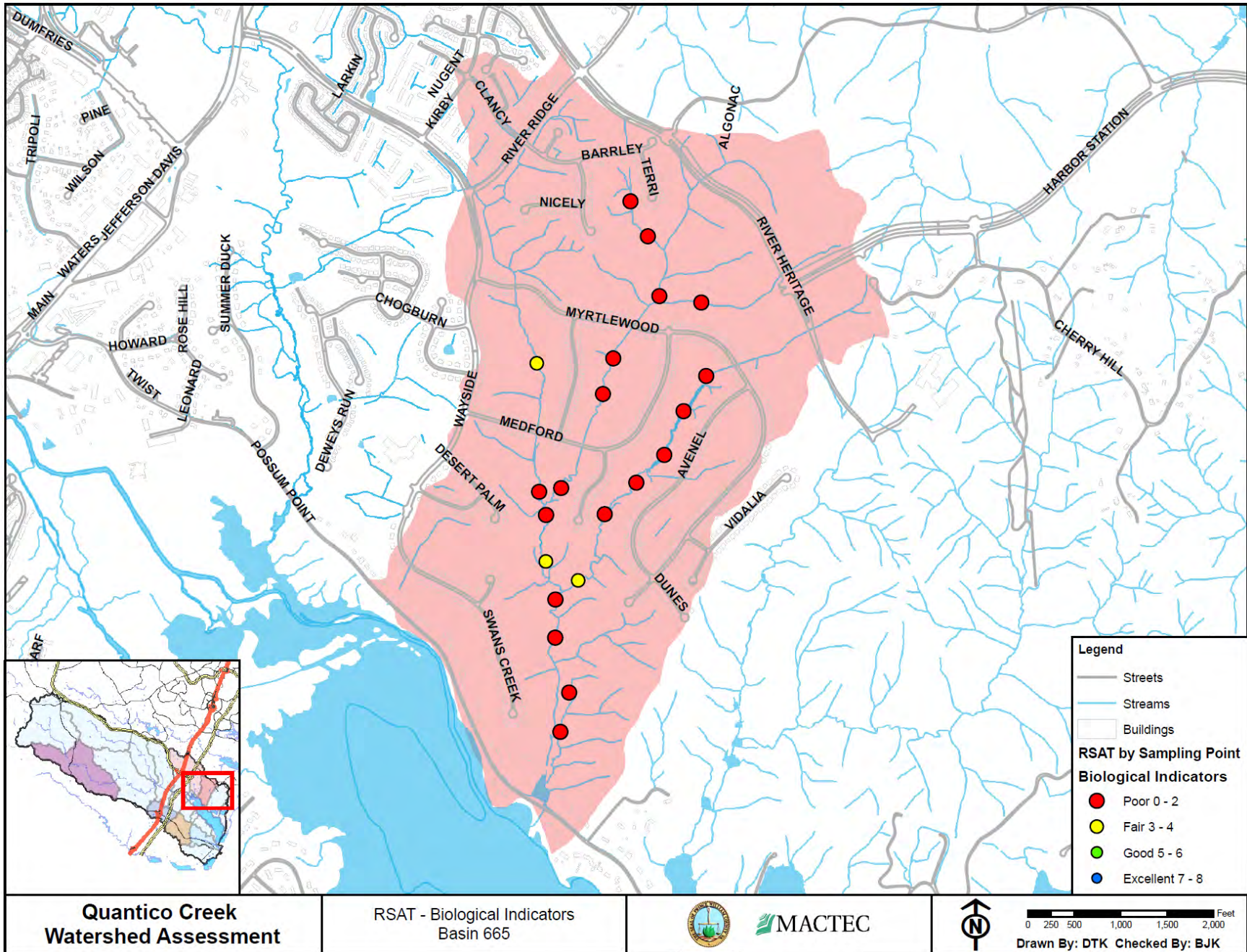
**Quantico Creek
Watershed Assessment**

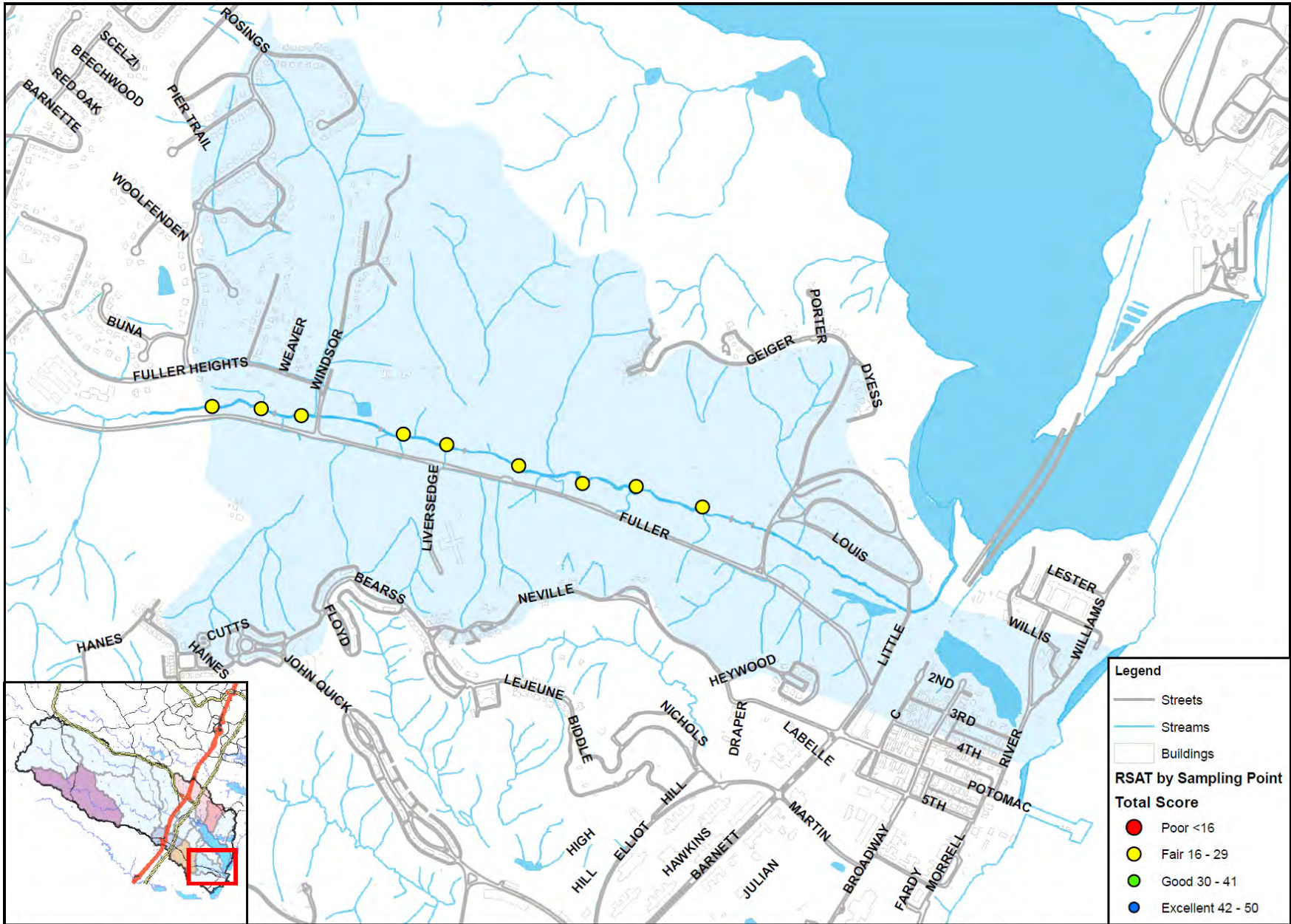
RSAT - Water Quality
Basin 665



Drawn By: DTK Checked By: BJK







Legend

- Streets
- Streams
- ▭ Buildings

RSAT by Sampling Point

Total Score

- Poor <16
- Fair 16 - 29
- Good 30 - 41
- Excellent 42 - 50

Quantico Creek Watershed Assessment

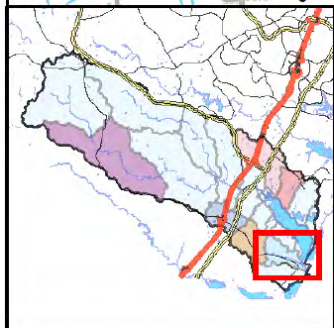
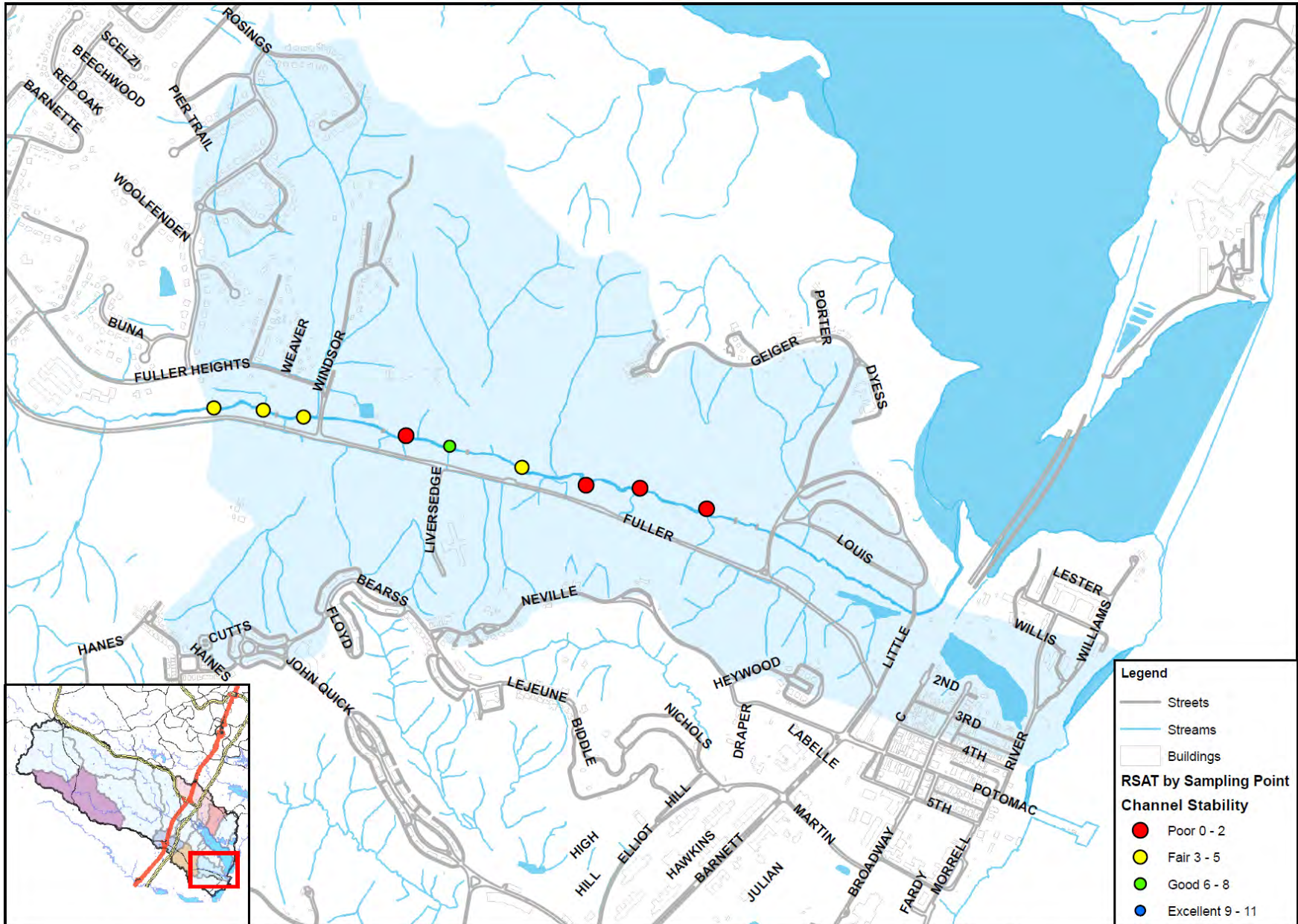
RSAT - Total Score by Sampling Point
Basin 690



MACTEC



0 300 600 1,200 1,800 Feet
Drawn By: DTK Checked By: BJK



**Quantico Creek
Watershed Assessment**

RSAT - Channel Stability
Basin 690



Drawn By: DTK Checked By: BJK

