

Appendix G Index

Map of Exposed Utilities and Infrastructure Identified During Stream Assessments. Photographs referenced below are located in Appendix F.

Table 5.4 Summary of Suggested Maintenance and Spot Improvements ¹

Stream	Photo #	Subshed	Observed Conditions	Maintenance Priority ¹
2	2	440	Failing utility supports	Medium
3	4,5,7,8	440	Exposed utilities/failing supports	Low
3	6	440	Exposed utility	Medium
4	10	440	Eroding utility support	Low
5	12	440	Exposed utility	Low
6A	21	440	Exposed utility	Medium
8A	27,28	444	Exposed utilities	Low
8B	29	444	Exposed utility	Low
10	N/A	444	Exposed utility (cable/phone)	Low
11	40	444	Exposed utility	Low
15	48	448	Exposed utility	Low
17A	52	448	Exposed utility	Low
17B	54	448	Hazard; Eroding infrastructure on personal properties (e.g. fences and retaining walls)	High
18A	56	448	Failing outfall	Medium
18A	57	448	Exposed utility	Low
19B	64	450	Exposed utility	Low
21	72, 74	450	Hazard; Eroding wing wall and exit ramp; Exposed utilities	High
23	80	450	Exposed utility	Low

¹ Maintenance Priority Descriptions: Low: Monitor after major storm events; Medium: Monitor periodically and fix when funds are available; High: Fix immediately and monitor routinely

² Repairs will be included as part of restoration as proposed in Conceptual Plans ([Appendix J](#)).

³ Excerpt from Section 5.0

The Occoquan Watershed in Prince William County

Exposed Utilities and Infrastructure
Identified During Stream Reconnaissance

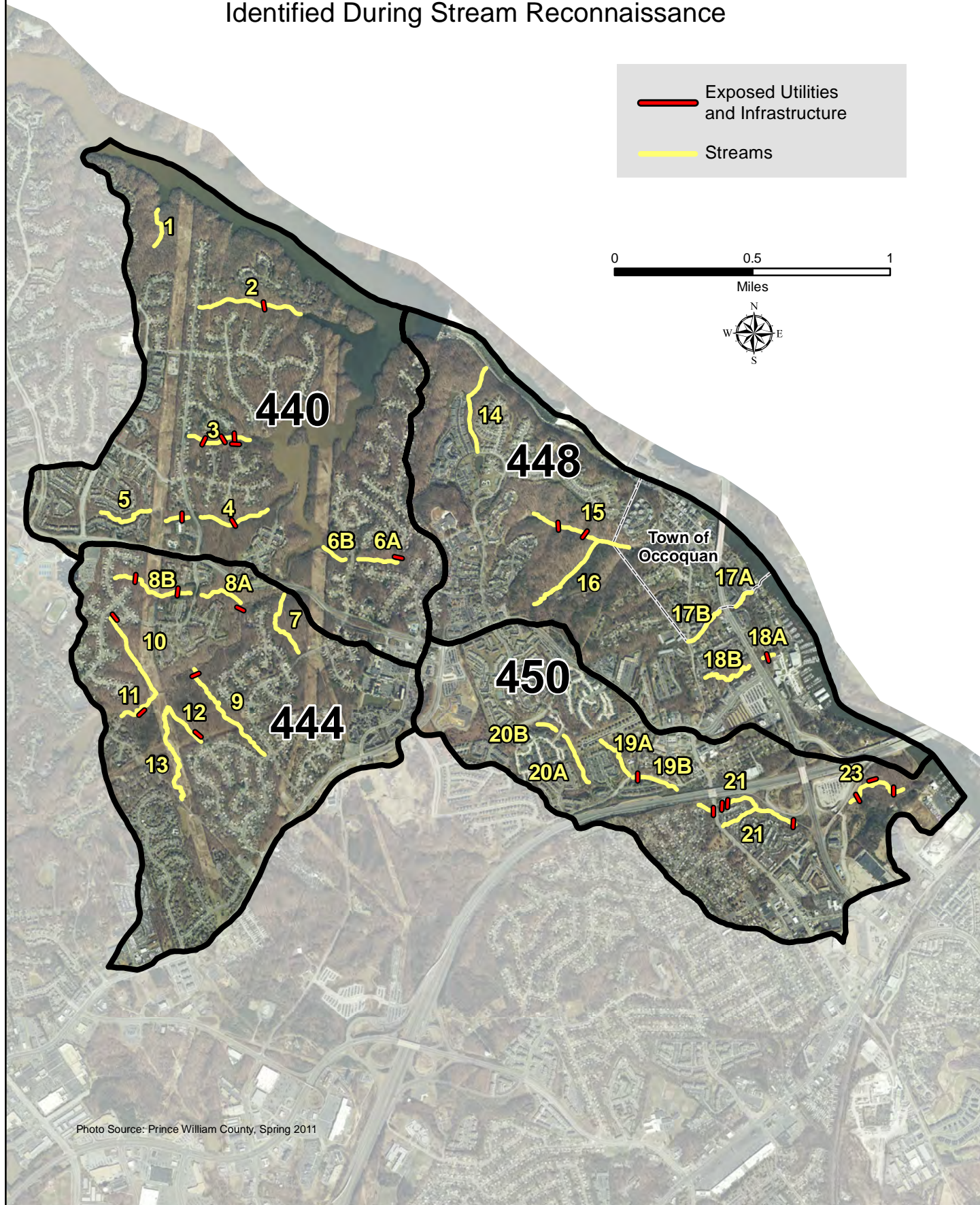


Photo Source: Prince William County, Spring 2011